

**DEPARTMENT OF GEOGRAPHY**  
**ALVIN COMMUNITY COLLEGE**  
**ACADEMIC PROGRAM REVIEW**  
**DIVISION OF SOCIAL SCIENCES**  
**DEPARTMENT OF GEOGRAPHY**  
**ACADEMIC YEAR 2003-04**

**ORGANIZATION OF PROGRAM**

**MISSION/GOALS:** (Institutional Effectiveness and Research) The criteria used for assessment of objectives are as follows:

1. Does the department have a mission statement?
2. Are the department objectives, assessment criteria, assessment results, and use of results presented in clear and complete sentences?
3. Are the assessment criteria well-defined?
4. Are the objectives adequately assessed?
5. Are assessment results coupled with meaningful follow-up actions?
6. Are the objectives properly linked with institutional goals?

Additionally, all departments are to include at least one educational outcome and an objective related to recruitment or retention.

Item	Strong	Adequate	Needs Improvement
Mission Statement	X		
Evaluate the presentation of objectives, assessment criteria, and results	X		
Evaluate the assessment criteria	X		
Evaluate the assessment results			X
Evaluate the use of results			X
Evaluate the integration with institutional goals	X		
Inclusion of an educational outcome	X		
Inclusion of a recruiting or retention objective	X		

Describe any changes needed.

1. For objective #2 (*2004 Planning and Effectiveness Manual, page 151*), the “Assessment Results” do not address professional meetings, departmental meetings, and other items mentioned under “Assessment Criteria and Procedures.” Similarly, statements about tests and exams were not mentioned under “Assessment Criteria & Procedures.”
2. Under objective #4 (*2004 Planning and Effectiveness Manual, page 151*), “Use of Results” references contact hours for Fall 2004, which obviously has not occurred yet. Fall 2002 or Spring 2003 should be the semester that is referenced.

## **DEPARTMENT OF GEOGRAPHY**

Additionally, the results may be strengthened by giving the specific contact hour count and its ranking over a particular time interval.

## DEPARTMENT OF GEOGRAPHY

### SIPS AND SYLLABI (Department Chair)

Are written course syllabi current and available for all courses within the program?

ﻓ Yes

ﻓ No, *please explain and list missing syllabi.*

Are all Student Information Plans current?

ﻓ Yes

ﻓ No, *please explain and list outdated SIPs.*

## DEPARTMENT OF GEOGRAPHY

### TRANSFER ISSUES (Department Chair & Admissions/Advising)

Have any transfer problems been observed since the last program evaluation period?

No

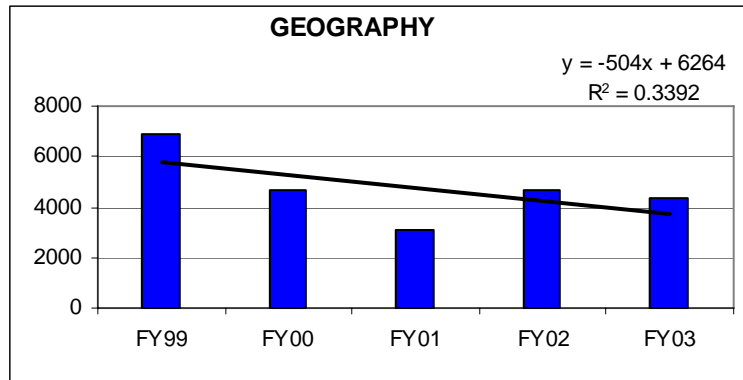
Yes, *please explain and indicate actions taken to resolve issues.*

**DEPARTMENT OF GEOGRAPHY**  
**ENROLLMENT MANAGEMENT/SUCCESS**  
**(Institutional Effectiveness and Research)**

**CONTACT HOURS**

- Five-year contact hour history by department

<b>Dept</b>	<b>FY99</b>	<b>FY00</b>	<b>FY01</b>	<b>FY02</b>	<b>FY03</b>
GEOGRAPHY	6912	4656	3120	4704	4368



**Summary of findings**

Showing a moderate level of linear correlation, contact hours for Geography have been decreasing by 504 hours per year over the past five years.

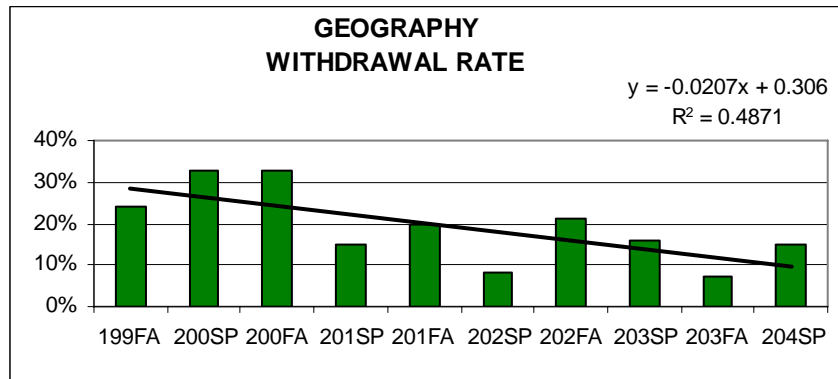
## DEPARTMENT OF GEOGRAPHY

### GRADE DISTRIBUTIONS (NO TDCJ)

All grade distribution data was collected from Fall and Spring semesters over the period from Fall 1999 through Spring 2004. Census day rosters were utilized, with grades of A, B, C, and D considered “passing”. Grades of A, B, and C are considered successful completion. Non-passing grades include F, I, and W.

- **Withdrawal rate history by department**

SEMESTER	199FA	200SP	200FA	201SP	201FA	202SP	202FA	203SP	203FA	204SP
WITHDRAWAL RATE	24%	33%	33%	15%	20%	8%	21%	16%	7%	15%



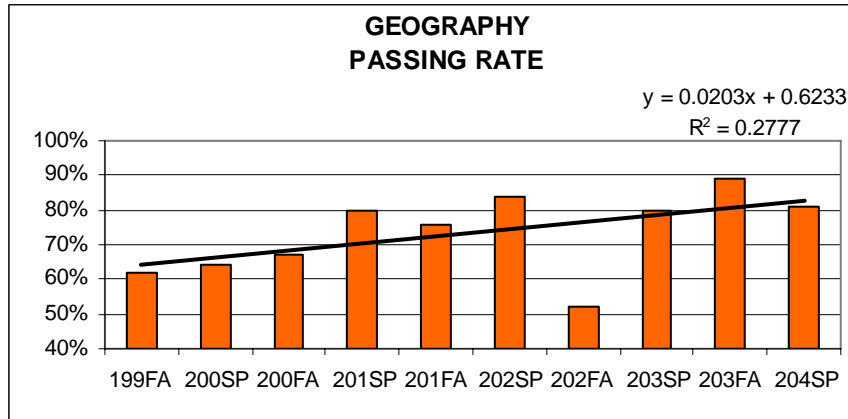
### Summary of Findings

Showing a moderately strong level of linear correlation, withdrawal rates have been decreasing by more than 4 percentage points per year over the past five years.

## DEPARTMENT OF GEOGRAPHY

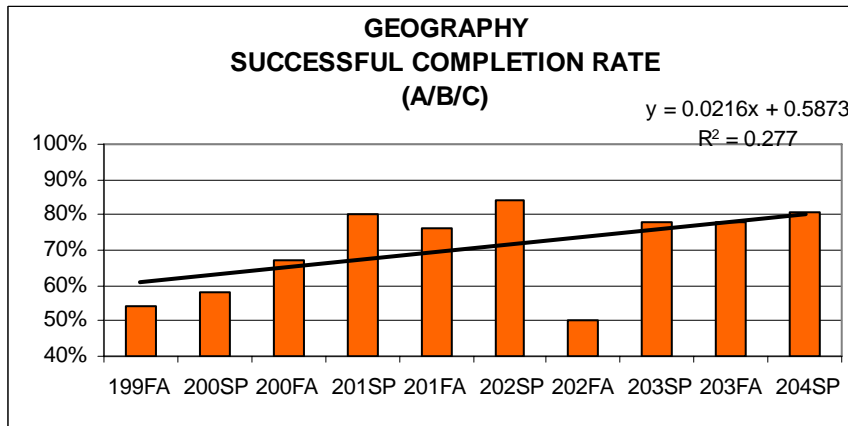
- **Passing rates**

SEMESTER	199FA	200SP	200FA	201SP	201FA	202SP	202FA	203SP	203FA	204SP
PASSING RATE	62%	64%	67%	80%	76%	84%	52%	80%	89%	81%



- **Successful completion (ABC) rates**

SEMESTER	199FA	200SP	200FA	201SP	201FA	202SP	202FA	203SP	203FA	204SP
A/B/C RATE	54%	58%	67%	80%	76%	84%	50%	78%	78%	81%



### Summary of Findings

Showing a moderate level of linear correlation, passing and successful completion rates have been increasing by more than 4 percentage points per year over the past five years.

**DEPARTMENT OF GEOGRAPHY**

**DECLARED MAJOR HISTORY**

ACC does not offer an associates degree in Geography.

**DEPARTMENT OF GEOGRAPHY**

**UHCL GPA RESULTS**

- GPA for majors with 15 or more students compared with UHCL GPA in that major

**(NOT APPLICABLE)**

## DEPARTMENT OF GEOGRAPHY

### FACULTY EVALUATIONS

#### STUDENT EVALUATIONS (Institutional Effectiveness and Research)

- History of instructors' evaluations over past three years

(Average of questions 1-11 on Student Evaluations)

INSTRUCTOR	PT/FT	199FA	200SP	200FA	201SP	201FA	202SP	202FA	203SP	203FA	204SP
ANYIKAM, A	PT							1.636			
BRUMBAUGH, F	PT			1.778	1.616						
HARVEY, J	PT							1.117			
NASH, M	PT							2.394			
TEPERA, LINDA	PT	1.192									
PARRA, C	PT										1.250
CHANCE, C	PT										1.273

#### FACULTY WITH AVERAGE\* EQUAL TO 2.000 OR MORE

SEM	NAME	AVERAGE*	PT/FT
202FA	NASH, M	2.394	PT

(\*Average of questions 1-11 on Student Evaluations)

#### Summary of Findings

With the exception of one poor instructor evaluation, students appear to be routinely satisfied with the performance level of instructors. Additionally, this instructor did not teach the course a second semester. No instructor in Geography has exhibited a consistent history of poor evaluations by students.

Have follow-ups been completed in a timely fashion for instructors with repeatedly below average evaluations? (Department Chair)

ﻧﻪ Yes

ﻧﻪ No, please explain.

Instructor no longer teaches GEOG for the college.

## DEPARTMENT OF GEOGRAPHY

### SUPERVISOR EVALUATIONS (Department Chair)

Have supervisor evaluations of faculty been completed regularly and in a timely fashion?

ف Yes

ف No, *please explain.*

#### Summary of Findings

There have been no recent notable job-performance issues with faculty.

## DEPARTMENT OF GEOGRAPHY

### PEER EVALUATIONS (Department Chair)

Have peer evaluations of faculty been completed regularly and in a timely fashion?

ف Yes

ف No, *please explain*

Summary of Findings

## DEPARTMENT OF GEOGRAPHY

### PROFESSIONAL DEVELOPMENT (Department Chair)

Are all faculty members current with professional development requirements?

ف Yes

ف No, *please explain.*

(Summary and documentation of professional development by faculty members to be included as an appendix.)

**DEPARTMENT OF GEOGRAPHY**

**DEVELOPMENTAL COURSES**

(if applicable)

(Institutional Effectiveness and Research)

**CONTACT HOUR HISTORY**

**(NOT APPLICABLE)**

**WITHDRAWAL RATES**

**(NOT APPLICABLE)**

**SUCCESSFUL COMPLETION RATES**

**(NOT APPLICABLE)**

**NEXT COURSE PERFORMANCE**

**(NOT APPLICABLE)**

**DEPARTMENT OF GEOGRAPHY**

**DISTANCE LEARNING**

(if applicable)

(Institutional Effectiveness and Research)

**CONTACT HOUR HISTORY**

**(NOT APPLICABLE)**

**WITHDRAWAL RATES**

**(NOT APPLICABLE)**

**PASSING RATES**

**(NOT APPLICABLE)**

**SUCCESSFUL COMPLETION RATES**

**(NOT APPLICABLE)**

**DEPARTMENT OF GEOGRAPHY**

**MINI SEMESTERS**

(if applicable)

(Institutional Effectiveness and Research)

Data was collected from Fall and Spring semesters over the period from Fall 1999 through Spring 2004. Census day rosters were utilized, with grades of A, B, C, and D considered “passing”. Grades of A, B, and C are considered successful completion. Non-passing grades include F, I, and W. During this time period, Geography 1303 was offered only once as a mini-semester in Spring 2002.

**CONTACT HOUR HISTORY**

<u>GEOG</u>	<u>202SPM3</u>
CONTACT HRS	432

**WITHDRAWAL RATES**

<u>GEOG</u>	<u>202SPM3</u>
WITHDRAWAL RATE	0%

**PASSING RATES**

<u>GEOG</u>	<u>202SPM3</u>
PASSING RATE	89%

**SUCCESSFUL COMPLETION (ABC) RATES**

<u>GEOG</u>	<u>202SPM3</u>
A/B/C RATE	89%

Summary of findings

Although Geography was only offered as a mini semester once during the five year evaluation period, it appears that students were very successful in the course.

**DEPARTMENT OF GEOGRAPHY**  
**HIGH SCHOOL CAMPUS DUAL CREDIT PROGRAMS**  
(if applicable)  
(Institutional Effectiveness & Research and Department Chair)

**CONTACT HOUR HISTORY**

**(NOT APPLICABLE)**

**WITHDRAWAL RATES**

**(NOT APPLICABLE)**

**PASSING RATES**

**(NOT APPLICABLE)**

**SUCCESSFUL COMPLETION RATES**

**(NOT APPLICABLE)**

**DEPARTMENT OF GEOGRAPHY**

**TDCJ PROGRAMS**

(if applicable)

(Institutional Effectiveness and Research)

**CONTACT HOUR HISTORY**

**(NOT APPLICABLE)**

**WITHDRAWAL RATES**

**(NOT APPLICABLE)**

**PASSING RATES**

**(NOT APPLICABLE)**

**SUCCESSFUL COMPLETION RATES**

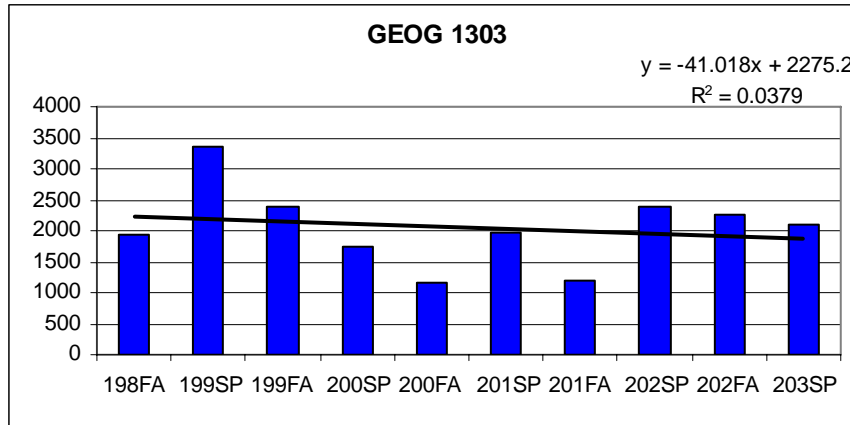
**(NOT APPLICABLE)**

# DEPARTMENT OF GEOGRAPHY

## CORE CURRICULUM

### FIVE-YEAR CONTACT HOUR HISTORY BY COURSE (Institutional Effectiveness and Research)

COURSE	198FA	199SP	199FA	200SP	200FA	201SP	201FA	202SP	202FA	203SP
GEOG 1303	1920	3360	2400	1728	1152	1968	1200	2400	2256	2112



#### Summary of findings

Showing a nearly non-existent linear correlation, no contact hour linear trends could be determined. It appears that, following a drop in 2000 and 2001, contact hours have resumed their previous level beginning in Spring 2002.

## DEPARTMENT OF GEOGRAPHY

### EVALUATION OF COURSE COMPETENCIES (Department Chair)

ACC recently completed an extensive evaluation of THECB course competencies and their inclusion in core curriculum courses at ACC. Detailed information re. course competencies and their significance in the geography program as well as the social sciences in general may be found in the *Final Report of the Alvin Community College Core Curriculum Committee*, October 2004.

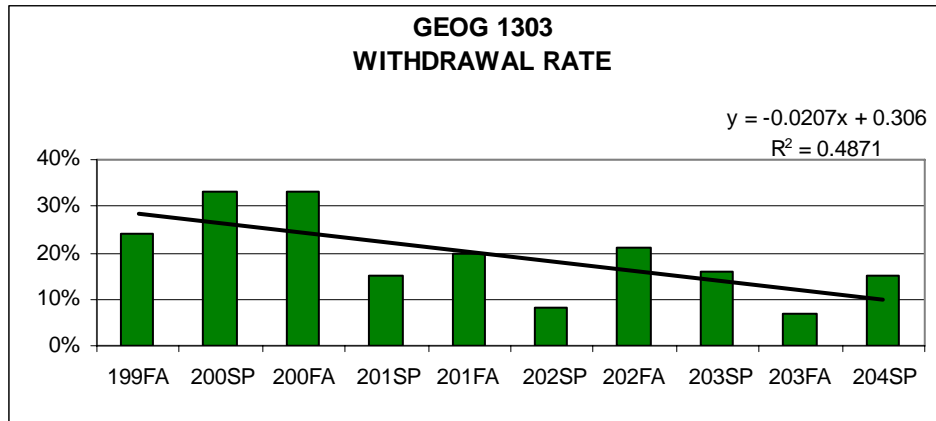
## DEPARTMENT OF GEOGRAPHY

### EVALUATION OF EDUCATIONAL OUTCOMES

Data was collected from Fall and Spring semesters over the period from Fall 1999 through Spring 2004. Census day rosters were utilized, with grades of A, B, C, and D considered “passing”. Grades of A, B, and C are considered successful completion. Non-passing grades include F, I, and W.

- **Withdrawal rates by course** (Institutional Effectiveness and Research)

GEOG 1303	199FA	200SP	200FA	201SP	201FA	202SP	202FA	203SP	203FA	204SP
WITHDRAWAL RATE	24%	33%	33%	15%	20%	8%	21%	16%	7%	15%



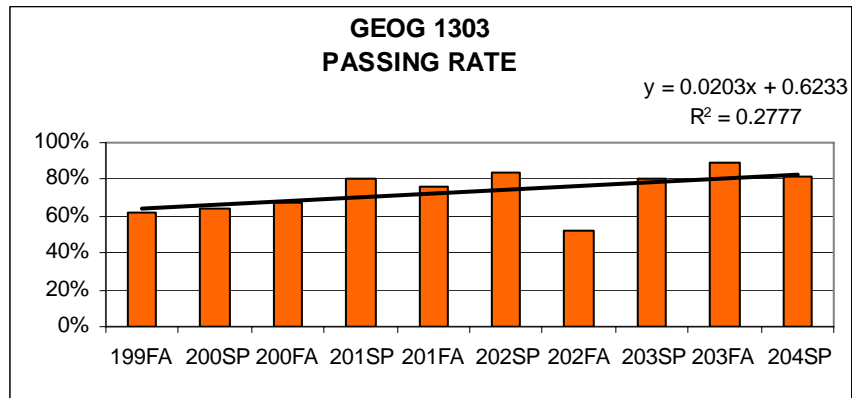
#### Summary of findings

Showing a strong level of linear correlation, withdrawal rates for Geography 1303 are decreasing at a rate of more than 4 percentage points per year.

## DEPARTMENT OF GEOGRAPHY

- **Passing rates by course** (Institutional Effectiveness and Research)

GEOG 1303	199FA	200SP	200FA	201SP	201FA	202SP	202FA	203SP	203FA	204SP
<b>PASSING RATE</b>	62%	64%	67%	80%	76%	84%	52%	80%	89%	81%

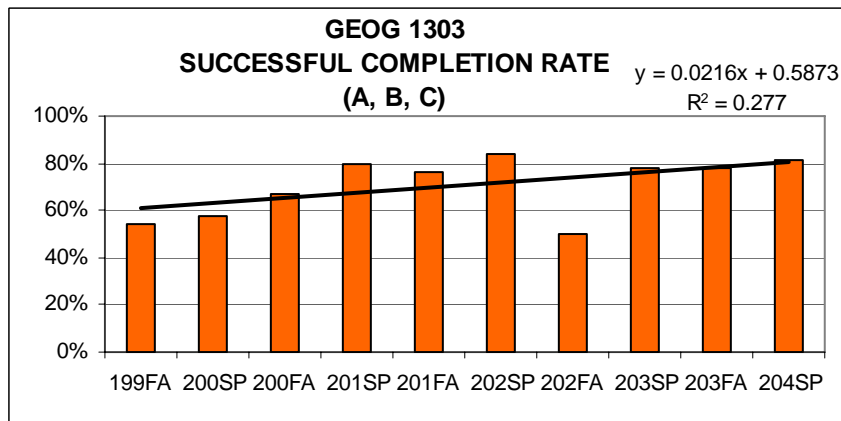


### Summary of findings

Showing a moderate level of linear correlation, passing rates for Geography 1303 are increasing at a rate of more than 4 percentage points per year.

- **Successful completion (ABC) rates by course** (Institutional Effectiveness and Research)

GEOG 1303	199FA	200SP	200FA	201SP	201FA	202SP	202FA	203SP	203FA	204SP
<b>ABC RATE</b>	54%	58%	67%	80%	76%	84%	50%	78%	78%	81%



### Summary of findings

As with passing rates, successful completion rates for Geography 1303 are increasing at a rate of over 4 percentage points per year.

## DEPARTMENT OF GEOGRAPHY

- **Factor analysis of instructor grade distributions for courses**  
(Institutional Effectiveness and Research)

Factor analysis and other statistical methods are used to determine patterns of grade distributions. The grade distributions for each instructor are also presented below. Data collected is from Fall 1999 through Spring 2004.

### GEOG 1303 - GRADE DISTRIBUTIONS

<b>GEOG 1303</b>	<b>A</b>	<b>B</b>	<b>C</b>	<b>D</b>	<b>F</b>	<b>W</b>	<b>I</b>
ANYIKAM	71%	0%	0%	0%	0%	29%	0%
BRUMBAUGH	22%	38%	15%	0%	2%	22%	2%
CHANCE	55%	15%	15%	0%	0%	15%	0%
GARZA	10%	30%	30%	10%	0%	20%	0%
HARVEY	86%	10%	0%	0%	0%	5%	0%
NASH	13%	18%	19%	3%	19%	23%	5%
PARRA	35%	26%	19%	6%	6%	6%	0%
SINGH	64%	12%	7%	0%	0%	12%	5%
TEPERA	27%	16%	13%	7%	6%	28%	3%
<b>GEOG 1303</b>	<b>37%</b>	<b>20%</b>	<b>13%</b>	<b>3%</b>	<b>5%</b>	<b>19%</b>	<b>3%</b>

### RESULTS

Predominantly A's:

- Singh
- Harvey
- Anyikam
- Chance
- Parra
- Tepera

Predominantly B's, C's and W's:

- Garza
- Brumbaugh
- Nash

### COMPONENT MATRIX

Rotated Component Matrix <sup>a</sup>

	Component	
	1	2
SINGH	.995	
HARVEY	.993	
ANYIKAM	.962	
CHANCE	.961	
PARRA	.750	
TEPERA	.687	
GARZA		.916
BRUMBAUGH		.857
NASH		.780

Extraction Method: Principal Component Analysis.  
Rotation Method: Varimax with Kaiser Normalization.

a. Rotation converged in 3 iterations.

## DEPARTMENT OF GEOGRAPHY

- **Review of exams for courses (Department Chair)**

Examinations administered by the geography faculty are appropriate for assessing level of attainment for learning objectives as well as the mastery of course competencies.

**DEPARTMENT OF GEOGRAPHY**

**HONORS PROGRAMS**

**Describe and evaluate honors program involvement. (Department Chair)**

N/A

**DEPARTMENT OF GEOGRAPHY**

**CONTINUING EDUCATION**

**Describe and evaluate course overlays with Continuing Education. (Department Chair)**

N/A

## **DEPARTMENT OF GEOGRAPHY**

### **TECHNOLOGY**

**Describe and evaluate technology integration into curriculum. (Department Chair)**

Like all instructors in the social sciences, geography instructors have access to a wide variety of technology including LCD technology, DVD players, VCR's, large-screen television, overhead projectors, etc. Extent of integration in curriculum depends on individual instructors.

## DEPARTMENT OF GEOGRAPHY

### RESOURCES (Department Chair)

#### Full-time/part-time faculty ratios and trends

Until recently all classes have been taught by adjunct faculty.

#### Percentage of classes taught by full-time faculty

One GEOG course currently being taught by full-time faculty.

#### Adequacy of departmental budget

Is the current departmental budget adequate to meet the needs of the program?

ف Yes

ف No, *please explain.*

Our students have demonstrated a clear demand for the geography courses we offer, but the department will not reach its full potential until the employment of full-time faculty.

#### Adequacy of facilities

Are the facilities required by the program adequate to meet the needs of the program?

ف Yes

ف No, *please explain.*

**DEPARTMENT OF GEOGRAPHY**  
**EVALUATION OF SUPPORT SERVICES**  
 (Department Chair)

<b>Support Service</b>	<b>Strong</b>	<b>Adequate</b>	<b>Needs Improvement</b>
Library	*		
Copy center	*		
Media center	*		
IT	*		
Student workers	*		
Tutorial services	*		
Other (describe)			

If “needs improvement” was checked, describe areas of concern.

(The above matrix was completed by Division Chair of Social Sciences and is based on communication with adjunct faculty in the PHIL Department.)

## DEPARTMENT OF GEOGRAPHY

### FUTURE

(Department Chair)

#### **Strengths**

Describe areas of strength within the program.

- There is a readily evident student demand for our GEOG courses.
- We have in general employed excellent adjunct faculty.
- A tenured full-time faculty member in the HIST Dept. has expressed an interest in further developing the GEOG program

#### **Weaknesses**

Describe areas of weakness within the program.

- Lack of funding;
- long-term dependence on adjunct faculty.

#### **Opportunities**

Describe feasible opportunities for improvement or enhancement to the program.

Assigning full-time faculty to full-time GEOG instruction.

#### **Threats**

Describe any obstacles to the success of the program.

- Inadequate funding;
- continued reliance on adjunct faculty.

#### **Quality Enhancement Plan**

## **DEPARTMENT OF GEOGRAPHY**

Describe actions and plans that the program/Department will implement over the next three years to improve its program. Each plan should describe:

1. What specifically is to be done and how it will help;
2. Who is responsible for carrying out the activity or process;
3. How the activity will be assessed;
4. A date when completion is expected.

Distance-learning program for GEOG; possibility of full-time faculty teaching all GEOG courses. Social Sciences division chair will monitor developments in these areas.

### **Evaluation of previous QEP**

Summarize the attainment of action plans developed during the last Program Review.

**(NOT APPLICABLE)**