

Registration Information

This lecture series is **FREE**.

Reserve your seat **TODAY!** Space is limited.

281.756.5650

or

jmurphy@alvincollege.edu

Jessica Murphy, BS, RRT-NPS, RDCS, RVT
ACC DCVS Program Director

Snacks will be provided!



Instructors

Lynne Bruner, RDCS
Monesha Gupta, MD
Jose Quinones, MD
Poyee Tung, MD
Jennie Zarasvand, RDCS

Future Lecture Series

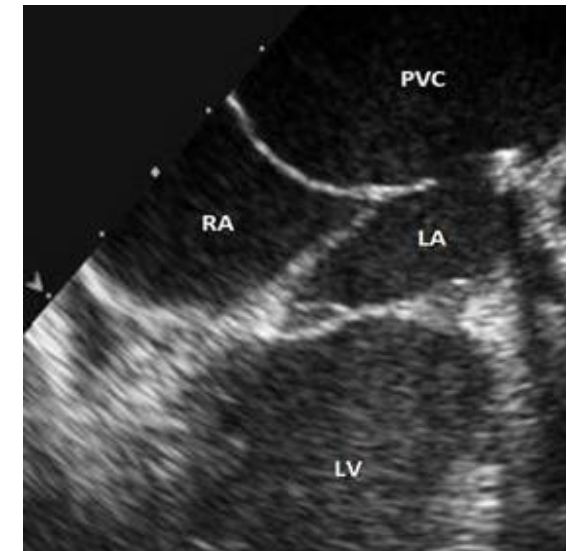
- D-transposition of great arteries
- L-transposition of great arteries
- Coronary artery anomalies
- Ebsteins anomaly
- Mitral stenosis and supramitral stenosing ring
- Congenital mitral regurgitation
- Partial anomalous pulmonary venous return
- Heterotaxia syndrome
- Aortic valve disease
- Double inlet left ventricle
- Systemic venous anomalies
- Cor triatriatum
- Shones syndrome
- Pulmonary valve and pulmonary artery anomalies
- Pulmonary atresia with intact ventricular septum



ALVIN COMMUNITY COLLEGE

Diagnostic Cardiovascular Sonography
3110 Mustang Road
Alvin., Texas 77511
(281) 756-5650

PEDIATRIC ECHOCARDIOGRAPHY LECTURE SERIES



Heart and Vascular Institute
3rd Floor, Conference Room A&B,
HVI 3.103
6411 Fannin Street, Houston
Memorial Hermann Hospital
Texas Medical Center

Sponsor

**Alvin Community College
DCVS Program**

Monesha Gupta MD, FAAP, FACC, FASE,
Pediatric Cardiologist, Clinical Director,
Pediatric Sonography Program

Course Overview

Various types of congenital heart defects occur, and pediatric echocardiography requires knowledge of not only the anatomy of these defects but also the other lesions associated with the defects. Based on this knowledge, there are specialized technical skills in obtaining the correct images to demonstrate the anatomy. This is followed by accurate interpretation of the physiology of the lesions and determining the surgical procedure best suited to either palliate or repair the anatomical defect. Furthermore, once the surgery has occurred, the knowledge of correct images need to be obtained to demonstrate the surgical results and evaluate for the late complications. In summary, the sonographer should have the precise knowledge to be able to demonstrate the lesions by means of echocardiography. This course is intended to demonstrate the anatomy of congenital heart defects with a focus on the echocardiographic skills.

Educational Objectives

Participants should be able to:

- Define anatomy of the various congenital heart defects discussed in this series.
- Describe the echocardiography findings associated with the defects covered.
- Describe the physician and sonographer's role in identifying and quantifying the defect.
- Describe the surgical procedures for palliation and repair of these congenital heart defects.

Course Calendar 2011 - 2012

Lectures are 1.5 hours each and held every other month on **Monday's from 6 - 7:30pm.**

8/8/11	Interrupted Aortic Arch - Monesha Gupta
10/17/11	Truncus & Hemitruncus - Jose Quinones
12/12/11	Fetal Echocardiography - Jennie Zaravasand
2/13/12	Tricuspid Atresia - Lynne Bruner
4/9/12	Adult Congenital Heart Disease - Poyee Tung
6/11/12	Total Anomalous Pulmonary Venous Return - Monesha Gupta



CME Credit

Receive 1.5 SDMS CME per class (Society of Diagnostic Medical Sonography)

A total of 9 CME's approved for this series if all lectures are attended.

Participants must legibly sign attendance roster and provide all information requested.

CME's are **Emailed** to the email address provided on the CME roster.

Course Materials

Printed material will be given on the learning points for the lecture. Students will be encouraged to read the following textbooks as well:

Echocardiography in Pediatric and Adult Congenital Heart Disease

Editors: Benjamin W Eidem, Frank Cetta, Patrick W O'Leary. Lippincott Williams & Wilkins (2009)

Echocardiography in Pediatric and Congenital Heart Disease: From Fetus to Adult

Editors: Wyman Lai, Luc Mertens, Meryl Cohen, Tal Geva (2009)