

FACT BOOK
FOR THE YEAR 2012 – 2013
RESEARCHED, ANALYZED, AND COMPILED IN 2013

Office of Institutional Effectiveness and Research
Alvin Community College
3110 Mustang Road
Alvin, TX 77511
(Printed 2013)

CONTENTS

CONTENTS	i
PREFACE	iii
CHAPTER I GENERAL INFORMATION	1
A. Map of Alvin Community College District and Service Area	2
B. Institutional Profile of Alvin Community College	3
C. Mission, Vision, and Goals	5
D. History	7
CHAPTER II ORGANIZATION AND GOVERNANCE	9
A. Board of Regents	10
B. Chief Administrator of the College	11
C. Standing Committees	11
D. Organizational Structure	12
CHAPTER III ALVIN COMMUNITY COLLEGE FOUNDATION	21
A. Alvin Community College Foundation, Inc.	22
CHAPTER IV THE COLLEGE DISTRICT AND ADJOINING AREAS	23
A. General Description	24
B. The City of Alvin	24
C. Alvin Community College District and Service Area Demographics	25
CHAPTER V STUDENTS IN CREDIT PROGRAMS	28
A. Enrollment Data	29
B. Student Characteristics	35
C. Enrollment Projections	39
D. Texas Department of Criminal Justice (TDCJ)	40
E. Technical Programs	41
F. Academic Programs	43
G. Degrees and Certificates Eearned	45
CHAPTER VI CONTINUING EDUCATION PROGRAMS	46
A. Continuing Education Executive Summary	47
B. Continuing Education Program Enrollment Data	48
C. Workforce Training Programs	49
D. Other Continuing Education Programs	50
E. All Continuing Education Programs Combined	51
F. Center for Professional and Workforce Development	52

CHAPTER VII STUDENT SERVICES	54
A. Office of Admissions and Academic Advising	55
B. Financial Assistance.....	58
C. Student Records	59
D. Library.....	59
E. Upward Bound	60
F. Office of Student Activities	61
CHAPTER VIII ALVIN COMMUNITY COLLEGE - PEARLAND CENTER	62
A. Introduction and History	63
B. Alvin Community College – Pearland Center Site Map.....	65
C. Alvin Community College – Pearland Center Campus Buildings.....	66
D. Pearland Center Enrollment History	67
CHAPTER IX PERSONNEL	73
A. EEO Policy Statement.....	74
B. Demographics of Faculty and Staff, 2011-2012	74
CHAPTER X FACILITIES AND PHYSICAL PLANT	77
A. Alvin Community College Campus Map	78
B. Alvin Community College Campus Buildings	79
C. Parking Lots and Playing Fields	80
D. Value of Buildings and Contents	81
E. Projects Completed	82
CHAPTER XI FINANCES	83
A. 2012 Budget Overview	84
B. Local Tax Base	84
C. Brazoria County Tax Office Tax Roll Calculations for ACC.....	86
D. Revenues from State	88
E. Revenues from Tuition and Fees	89
F. Grants and Contracts.....	90
SOURCES.....	93
APPENDIX.....	93
A. Fall 2012 Quick Reference Guide.....	94
B. Texas Community College Tax and Contact Hour Information 2011-2012	95

PREFACE

The purpose of the *Alvin Community College Fact Book* is to place into a single document all the pertinent facts concerning the College's operations. It provides the reader with a convenient and authoritative source of information about the historical development and present focus of the College.

The organization of the material was designed to present a brief, yet comprehensive, report of the various facets of Alvin Community College. Chapters I and II depict the institutional profile and organizational structure of the College. Chapters III and IV reflect the surrounding community, environment, influences, and support. Chapters V through VII provide descriptive data about the student population and student services. Chapter VIII provides specific data about Alvin Community College - Pearland Center and its student population. Chapters IX, X, and XI concentrate on personnel demographics, physical facilities, and financial information.

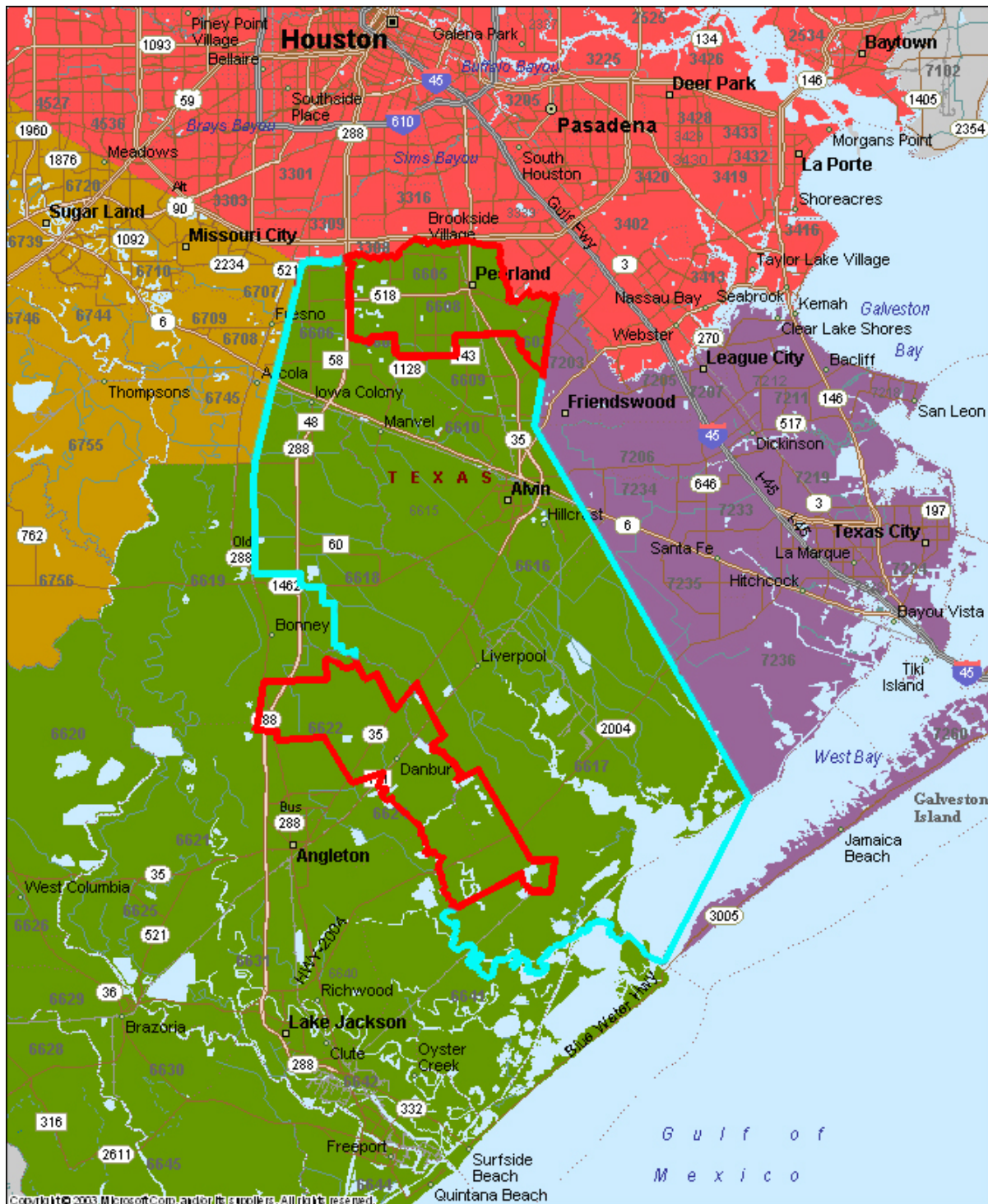
The *Fact Book* is developed by the Office of Institutional Effectiveness and Research and is updated annually. The 2012-2013 document represents the twenty-ninth edition.

A. Rodney Allbright
President

CHAPTER I

GENERAL INFORMATION

**A. MAP OF ALVIN COMMUNITY COLLEGE DISTRICT
AND SERVICE AREA¹³**



Each county is a different color.

The District is denoted by a blue line and the service area is denoted by a red line.

B. INSTITUTIONAL PROFILE OF ALVIN COMMUNITY COLLEGE

Type: Public Comprehensive Community College

Headcount¹¹: Academic and Technical

Fall 2011	5,193*
Fall 2011 (<i>with flexible entry</i>)	5,242
Spring 2012	4,813*
Spring 2012 (<i>with flexible entry</i>)	5,320
Fall 2012	5,190*
Fall 2012 (<i>with flexible entry</i>)	5,190

Headcount⁴: Continuing Education

2011-2012 1,482*

**Unduplicated headcounts exclude flexible entry.*

Faculty⁸:	Fall 2011	105 Full-time Academic and Technical Faculty
	Fall 2012	108 Full-time Academic and Technical Faculty

Finances⁶:	2011-2012	Operating Budget = \$25,052,345
	2012-2013	Operating Budget = \$25,056,008

Based on the 2011-2012 Annual Financial Report, funding for Alvin Community College comes from the state government (**23%**), federal government (**19%**), tuition and fees (**23%**), local taxes and miscellaneous income (**33%**), and investment income and other (**2%**).

Degrees Granted:

- Associate of Arts
- Associate of Science
- Associate of Applied Science

Certificates Granted:

- Certificate One – Less than one-year Programs
- Certificate Two – One-year Programs
- Certificate Three – Enhanced Skills Program

Divisions:

- Academic Programs
- Technical Programs
- Continuing Education

Recognition (Approved and Accredited by):

- Commission on Colleges of the Southern Association of Colleges & Schools
- National League of Nurses
- National Shorthand Reporters Association
- State and National Accreditation for Allied Health Programs
- Texas Commission on Law Enforcement Education and Standards
- Texas Education Agency
- Texas Higher Education Coordinating Board

C. MISSION, VISION, AND GOALS³

Mission Statement:

The mission of Alvin Community College is to improve lives by providing affordable, accessible and innovative educational opportunities to those it serves.

Vision Statement:

Alvin Community College will be recognized as a premier community college in the state of Texas.

Strategic Goals:

1. Student Success
Alvin Community College will provide access to high quality educational opportunities to its students in an environment that encourage success.
 - 1.1 Enrollment – Increase enrollment over a four year period.
 - 1.2 Completion – Increase the number of students that fall into the target completion areas.
 - 1.3 Completer Success – Increase or maintain the number of students succeeding in the target areas.
 - 1.4 Instructional Practices – Alvin Community College will exceed its peer institutions on the Community College Survey of Student Engagement (CCSSE) questions identified as addressing best instructional practices.
2. Partnerships & Resource Development
Alvin Community College will carry out its mission efficiently, and will engage in partnerships that bring resources to the college and community.
 - 2.1 Articulations – Increase the number of students who participate or request Technical articulated credit; increase the number of students who participate or request Dual Credit; maintain or increase the number of institutional Higher Education articulations.
 - 2.2 Grants/Private/Public Partnerships – Increase Alvin Community College's involvement in area economic development by working closely with all local economic development entities, both city and county.
3. Professional Development
Alvin Community College will promote lifelong learning for its employees that improves their effectiveness in serving students and the community.
 - 3.1 Tracking System – Establish a tracking system to monitor and evaluate full-time faculty and staff participation in professional development activities.

- 3.2 Training Program – Offer an accessible training program for all employees to support the goals of the college.
- 4. Cultural Awareness
 - Alvin Community College will have an educational environment that reflects a changing world and prepares its students to live and work in diverse situations.
 - 4.1 Student Population – The College will have a student population that reflects the community’s diversity.
 - 4.2 Cultural Activities – Participation will increase in cultural activities and events offered by the college.
- 5. Campus Safety
 - Alvin Community College will ensure the safety of its campus for students, employees and the community.
 - 5.1 Crime Rate - Alvin Community College will maintain a crime rate at or below state and local college averages.
 - 5.2 Safety Training - Alvin Community College will ensure that all Campus Police officers are adequately trained to meet emergency responses.
 - 5.3 Facility Safety - Alvin Community College will ensure that all building, structure, lighting, and grounds will be regularly inspected for unsafe conditions.

(Strategic Plan 2011-15: revised 2/12)

Purpose Statement:

In addition to the goals described above, Alvin Community College subscribes to the purpose of the public community college as outlined in Section 130.003 of the Texas Education Code. The purpose of each public community college shall be to provide:

- 1. Technical programs up to two years in length leading to associate degrees or certificates;
- 2. Vocational programs leading directly to employment in semi-skilled and skilled occupations;
- 3. Freshman and sophomore courses in arts and sciences;
- 4. Continuing adult education programs for occupational or cultural upgrading;
- 5. Compensatory education programs designed to fulfill the commitment of an admissions policy allowing enrollment of disadvantaged students;
- 6. A continuing program of counseling and guidance designed to assist students in achieving their individual educational goals;

7. Workforce development programs designed to meet local and statewide needs;
8. Adult literacy and other basic skills programs for adults; and
9. Such other purposes as may be prescribed by the Texas Higher Education Coordinating Board or local governing boards in the best interest of post-secondary education in Texas.

D. HISTORY⁵

The Alvin Community College District was approved by the qualified voters of the Alvin Independent School District on November 2, 1948. From its inception, until the 1971-72 academic year, the College was administered by officials of the Alvin Independent School District. The 1971-72 academic year marked the beginning of a new era in the history of Alvin Community College. A separate administration, tax district, and College Board were established to assume the management, control, and operation of a newly created Alvin Junior College District.

Initially, when the College and public schools were in the same system, the College was part of Alvin High School. The first classes began on September 12, 1949, in facilities which grouped grades 11 through 14 in one building and which placed Alvin under a system known as the 6-4-4 plan. One of the more important changes in the program of Alvin Community College was the building of a separate physical plant for academic work at the college level and dropping the 6-4-4 plan in favor of a 6-3-3-2 arrangement. The college program was strengthened by additional facilities, by an enlarged faculty, and by successfully meeting the standards of the Southern Association of Colleges and Secondary Schools (1959). Alvin Community College moved to its present campus for the summer session of 1963.

By a vote of both the original district and voters of adjoining territories, the college district was enlarged to nearly twice its geographical size in 1974. Then in the spring of 1975, an \$8 million bond issue was approved, providing funds for the facilities necessary to meet an expanding enrollment. In 1998 the College expanded into its service area with the establishment of the Alvin Community College - Pearland Center in the former C.J. Harris Elementary School in Pearland. In May 2005, a \$19,998,480 bond issue was approved to build a 98,790 square foot building for Science and Health Science programs. The building opened for fall classes in August 2007. On February 28, 2008, the Board of Regents voted to accept the construction bid from Barnier Building Systems in order to build a new Art Instruction Building. The bid was for \$605,479.00, which would provide approximately 4,800 square feet of instructional space. The construction of the building was completed in August of 2008, in time to utilize the facility for the 2008 fall semester.

The enrollment of Alvin Community College has grown from 134 students in 1949 to a record high of 5,736 (unduplicated headcount includes flexible entry) for the Fall 2010 state reporting period. During the period of growth, Alvin Community College has had five presidents:

<i>Mr. A.G. Welch</i>	<i>1949-54</i>
<i>Dr. A.B. Templeton</i>	<i>1954-64</i>
<i>Mr. D.P. O'Quinn</i>	<i>1964-71</i>
<i>Dr. T.V. Jenkins</i>	<i>1971-76</i>
<i>Dr. A. Rodney Albright</i>	<i>1976 to present</i>

CHAPTER II

ORGANIZATION AND GOVERNANCE

A. BOARD OF REGENTS³

Number of Regents: Nine

Term of Service on Board: Six years (consecutive terms are allowed)

Selection of Regents: Majority vote of District residents. Regents are selected in biennial elections held in even numbered years.

Regular Meetings: Monthly

Board Officers: Chairman, Vice Chairman, Secretary

General Board Responsibility: The Board of Regents derives its legal status from the Texas Constitution and the State Legislature. In discharging its duties, the Board shall function in accordance with applicable state and federal statutes, controlling court decisions, and applicable regulations promulgated pursuant to statute by state and federal agencies. Opinions of the Attorney General shall be used for guidance and interpretation of applicable law. The College Board shall constitute a body corporate and shall govern the community college district. The Board of Regents shall establish policy for the operation of affairs of the college in such a manner as will accomplish the efficient objectives and purposes of higher education for which the college district was created.

Current Regents:

L.H. “Pete” Nash, Chairman
Term Expires – May 2016

James B. DeWitt, Vice Chair
Term Expires – May 2018

Karlis Ercums III, Secretary
Term Expires – May 2016

Mac Barrow
Term Expires – May 2016

Brenda Brown
Term Expires – May 2014

Mike Pyburn
Term Expires – May 2014

Doyle Swindell
Term Expires – May 2018

Cheryl Knappe
Term Expires – May 2014

‘Bel Sanchez
Term Expires – May 2018

B. CHIEF ADMINISTRATOR OF THE COLLEGE³

The Chief Administrator of the College shall be known as the President. The President of Alvin Community College is appointed by the Alvin Community College Board of Regents and shall serve for such time and receive such compensation as it may establish. He shall have broad discretionary authority in carrying out the responsibilities of his office. The President shall report only and directly to the Alvin Community College Board of Regents. He is responsible for the execution of Board policies, within the framework of federal, state, and local laws. He shall represent the faculty and staff in recommending changes to the Board in all policy matters.

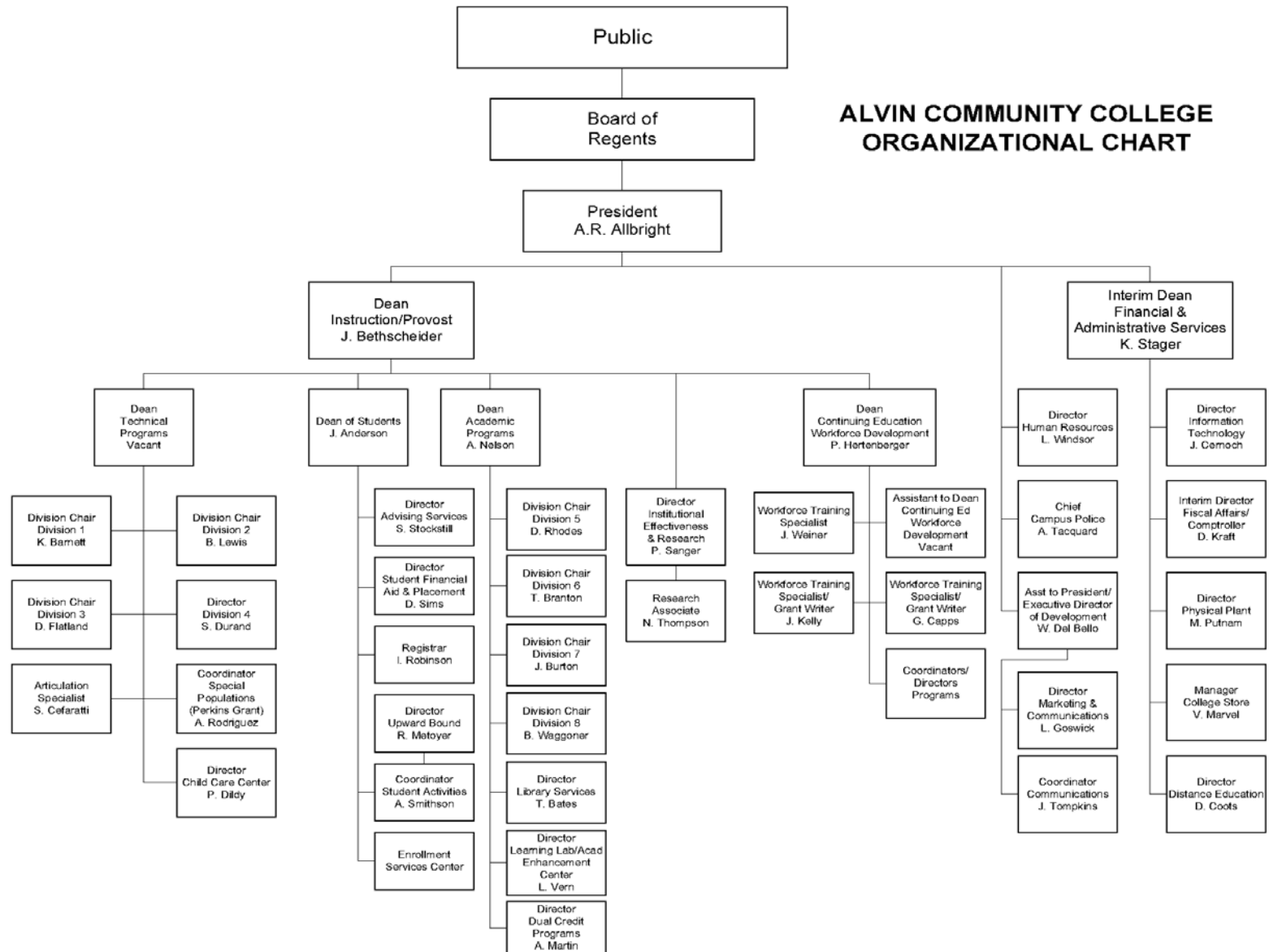
C. STANDING COMMITTEES¹

Standing committees are established each calendar year to focus on specific aspects of the College's functions and to provide an opportunity for faculty and staff to be a part of the decision-making process of the institution. These committees are composed of faculty, staff, and students. Through committee activity, changes in policies and practices can be effected. All full-time personnel are eligible to attend any of the standing committee meetings and are encouraged to do so. If a staff member is interested in topics to be discussed at a given meeting, he or she is encouraged to attend the meeting, make suggestions, and participate in committee discussions. However, only official committee members may vote during a standing committee meeting. The chairperson of a standing committee may also find it necessary to request that certain faculty members, staff members, or students attend a meeting to serve as resource persons.

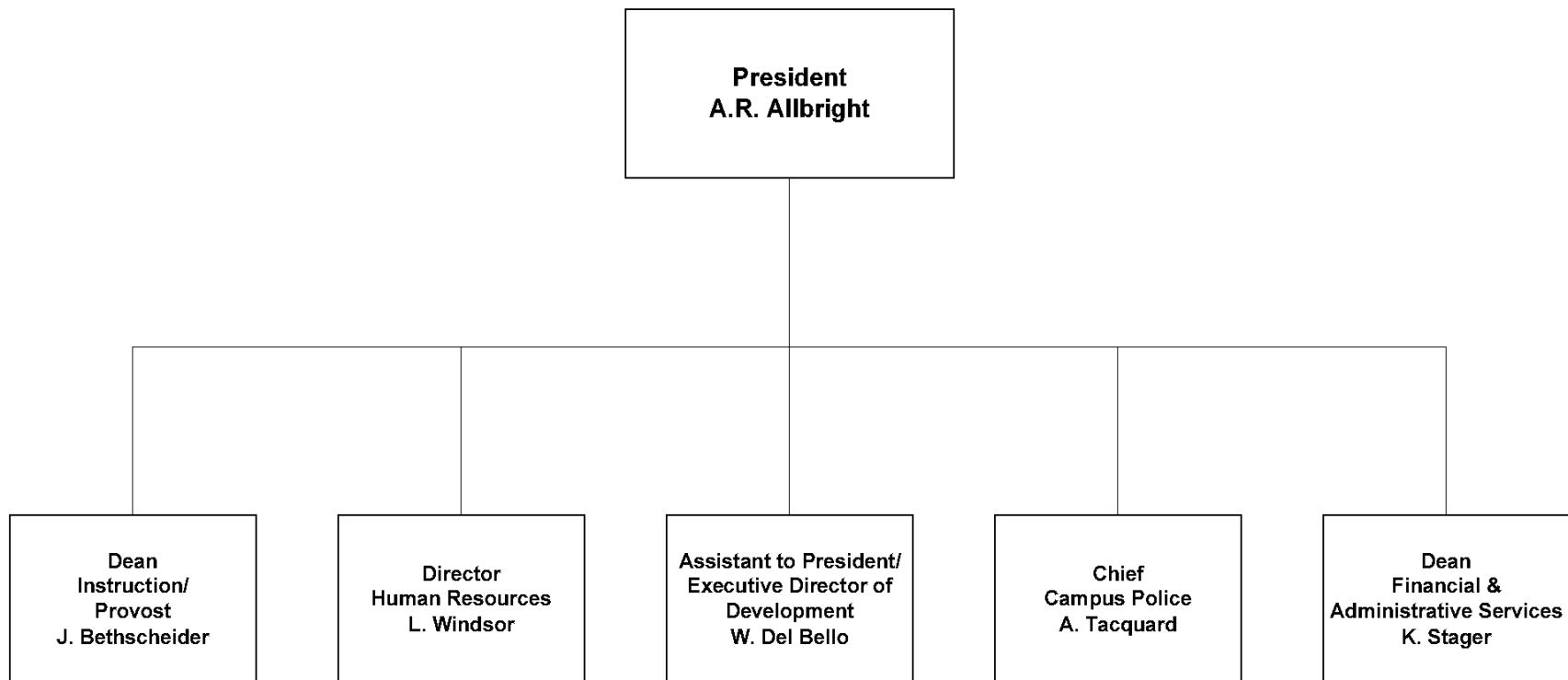
The following Standing Committees have been established.

- Americans with Disabilities Act (ADA)
- Athletics
- Behavioral Intervention Team (designated)
- College Facilities
- Curriculum/Judicial
- Distance Education
- Honors
- Information Technology
- Job Evaluation Committee (JEC; designated)
- Marketing & Recruiting
- Professional Development & Wellness
- Scholarship
- Student Success/ Retention
- Tenure (designated)
- Web Advisory

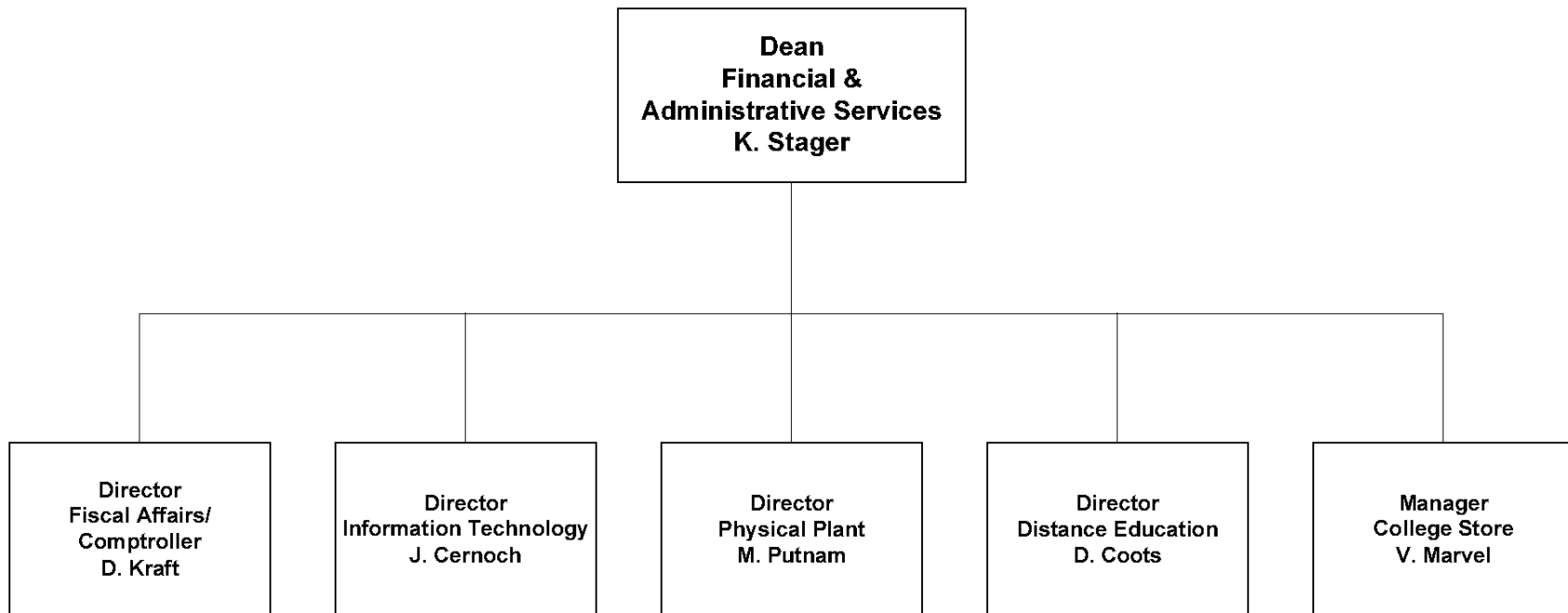
D. ORGANIZATIONAL STRUCTURE



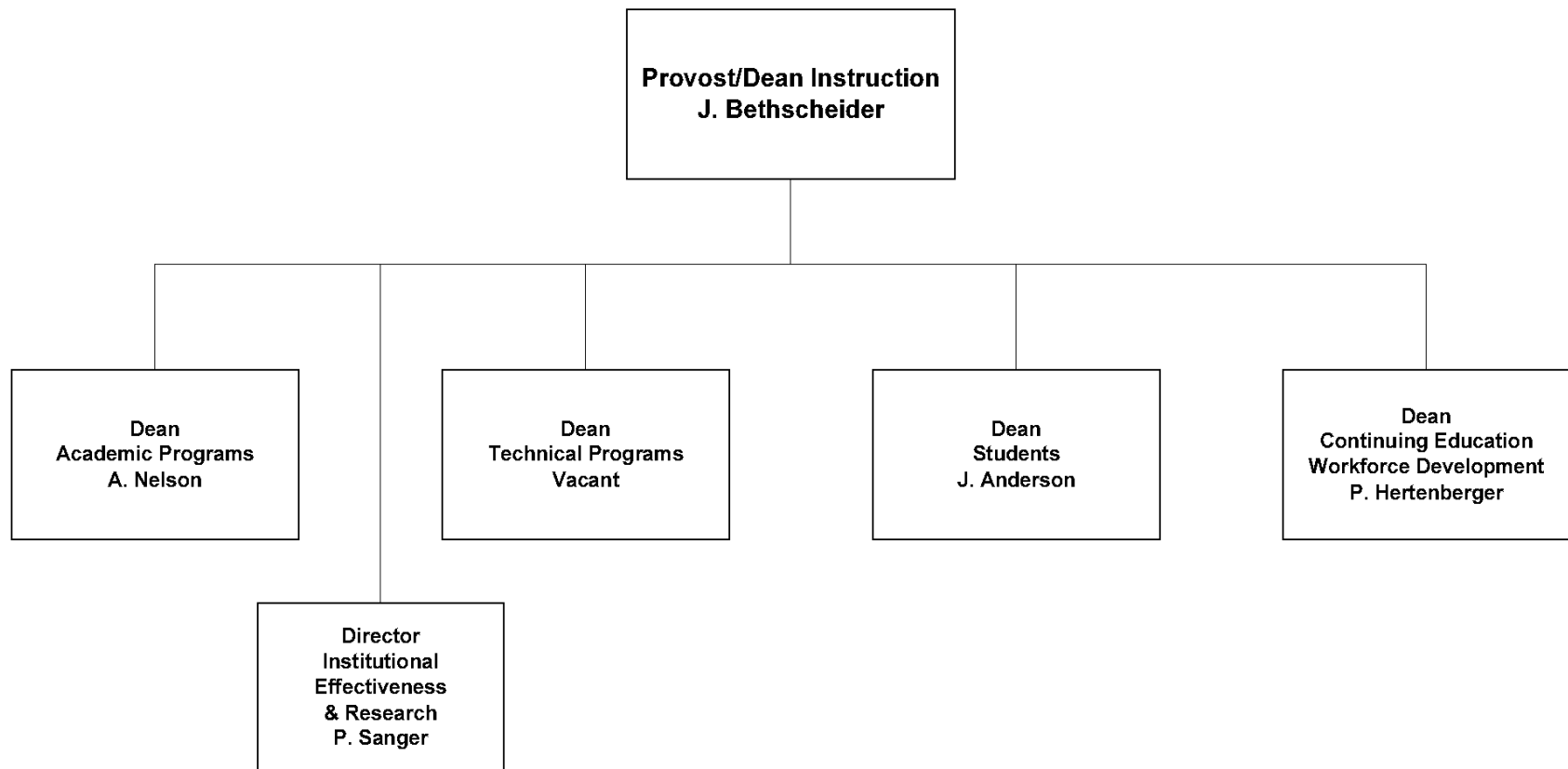
**ALVIN COMMUNITY COLLEGE
ORGANIZATIONAL CHART
REPORTING TO THE
PRESIDENT**



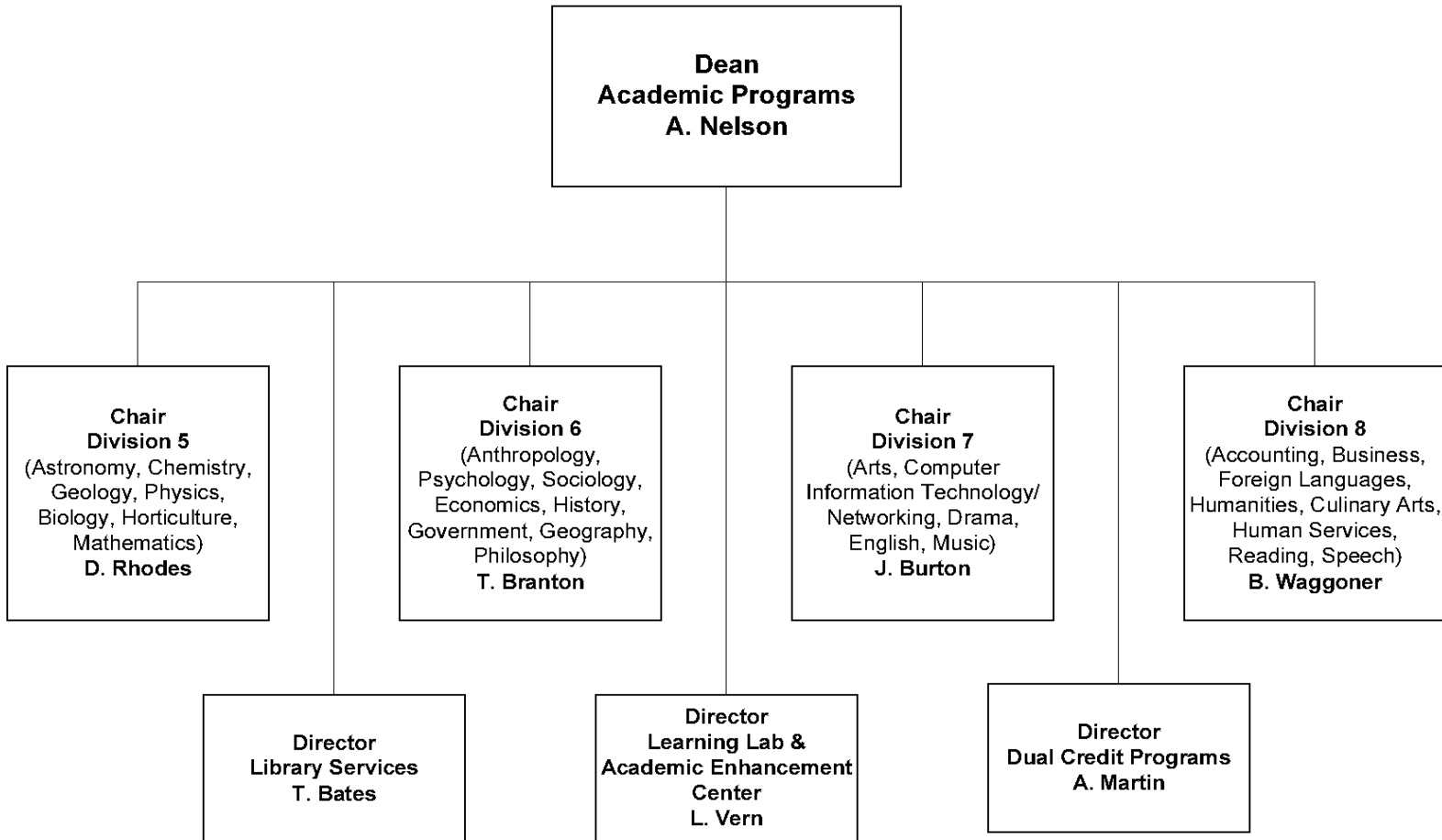
**ALVIN COMMUNITY COLLEGE
ORGANIZATIONAL CHART
REPORTING TO THE
DEAN OF FINANCIAL AND ADMINISTRATIVE SERVICES**



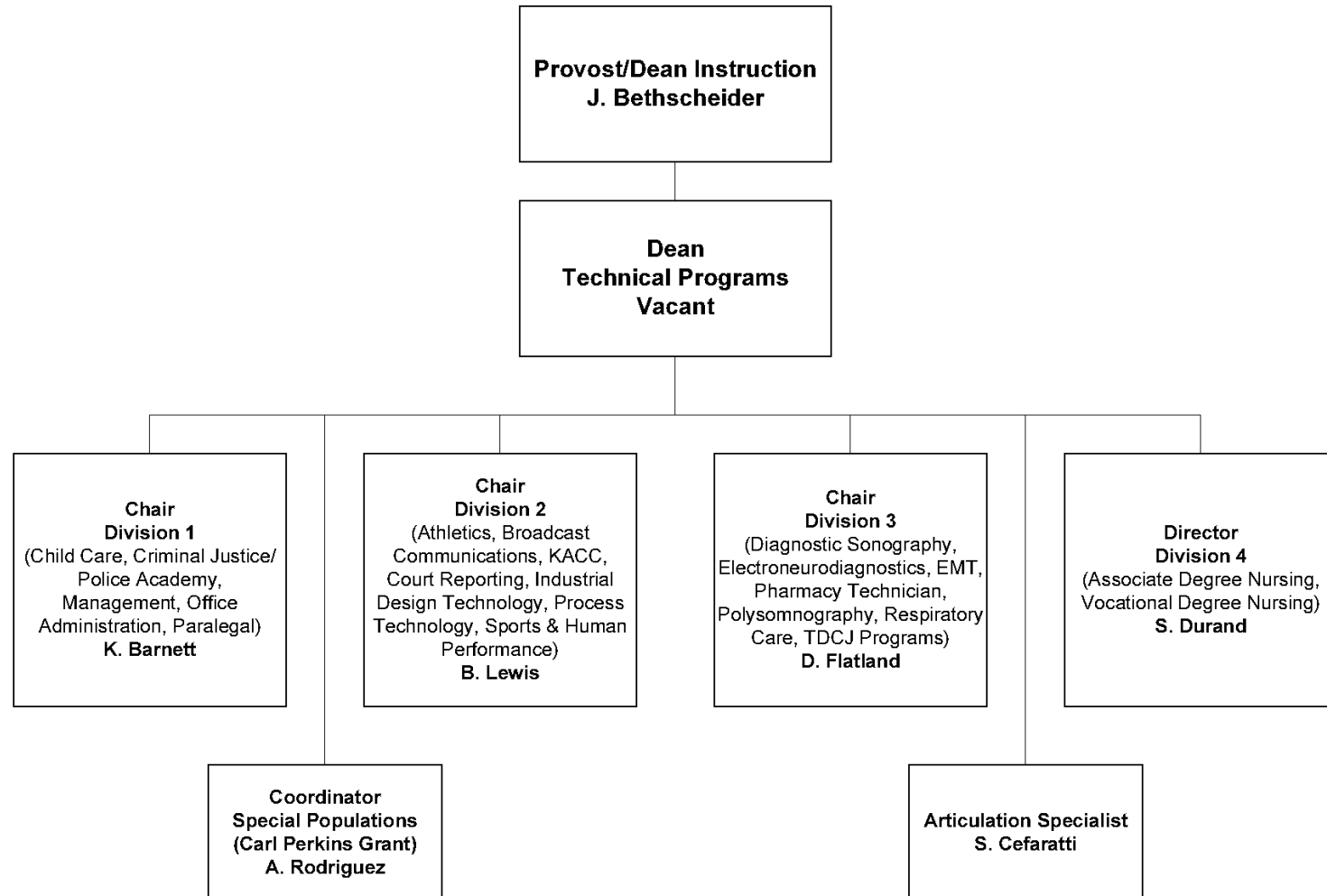
**ALVIN COMMUNITY COLLEGE
ORGANIZATIONAL CHART
REPORTING TO THE
PROVOST/DEAN OF INSTRUCTION**



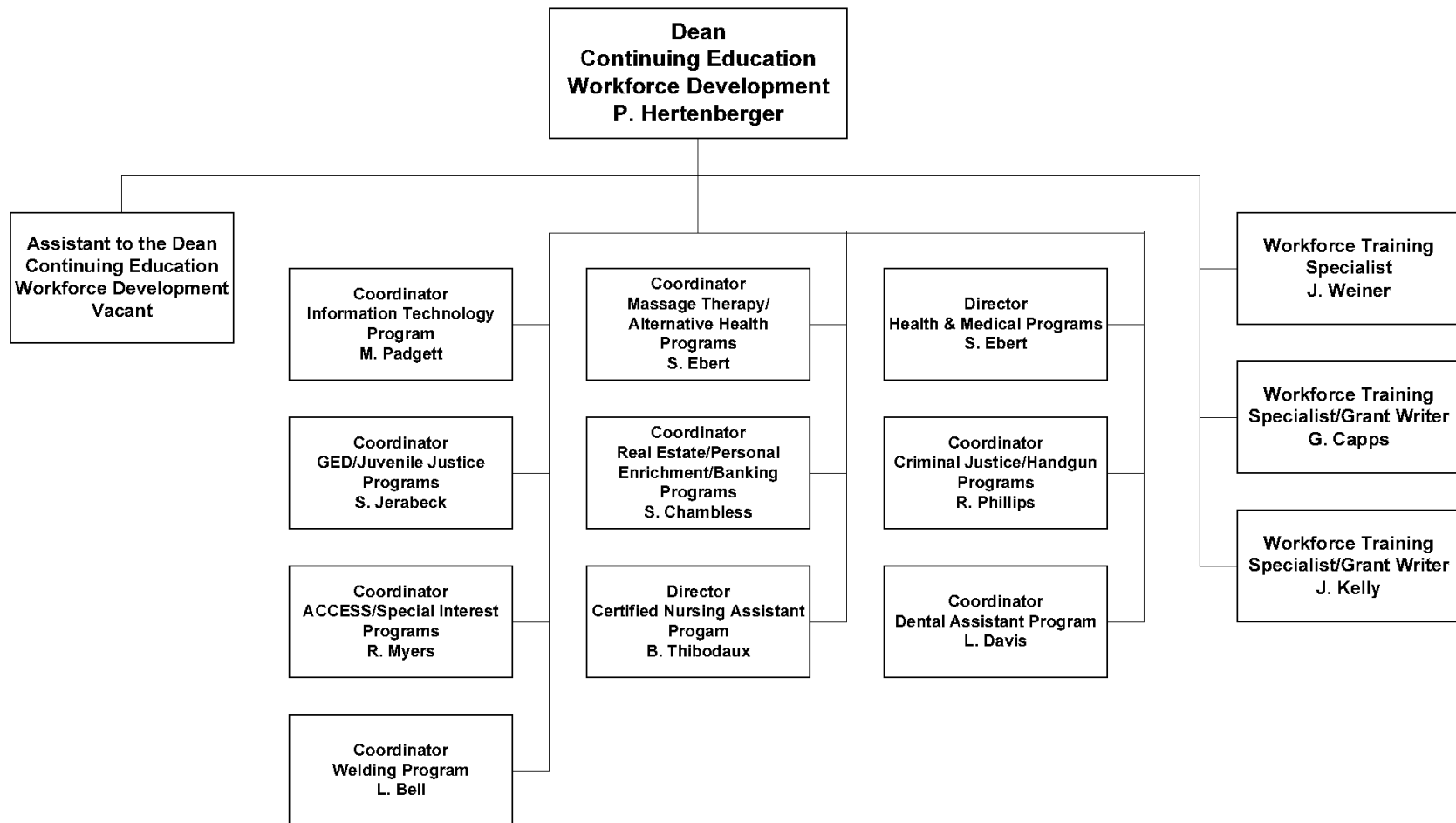
**ALVIN COMMUNITY COLLEGE
ORGANIZATIONAL CHART
REPORTING TO THE
DEAN OF ACADEMIC PROGRAMS**



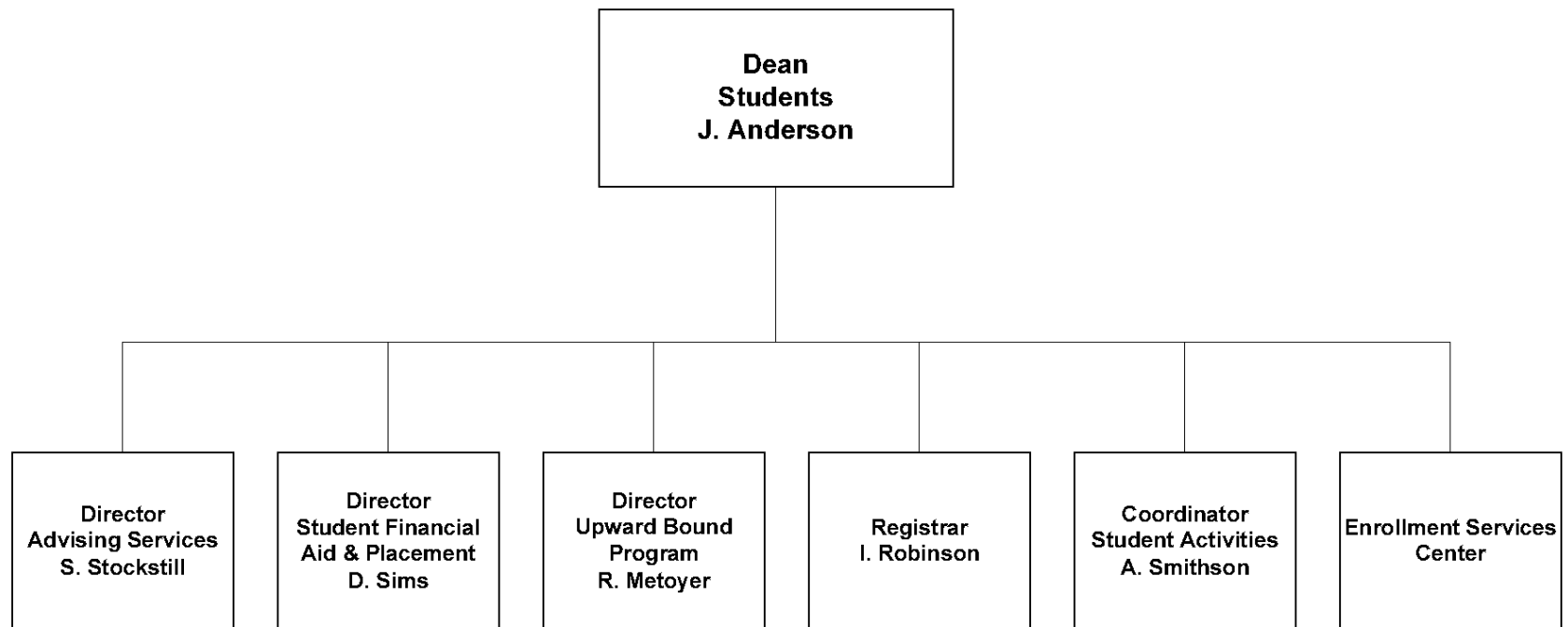
**ALVIN COMMUNITY COLLEGE
ORGANIZATIONAL CHART
REPORTING TO THE
DEAN OF TECHNICAL PROGRAMS**



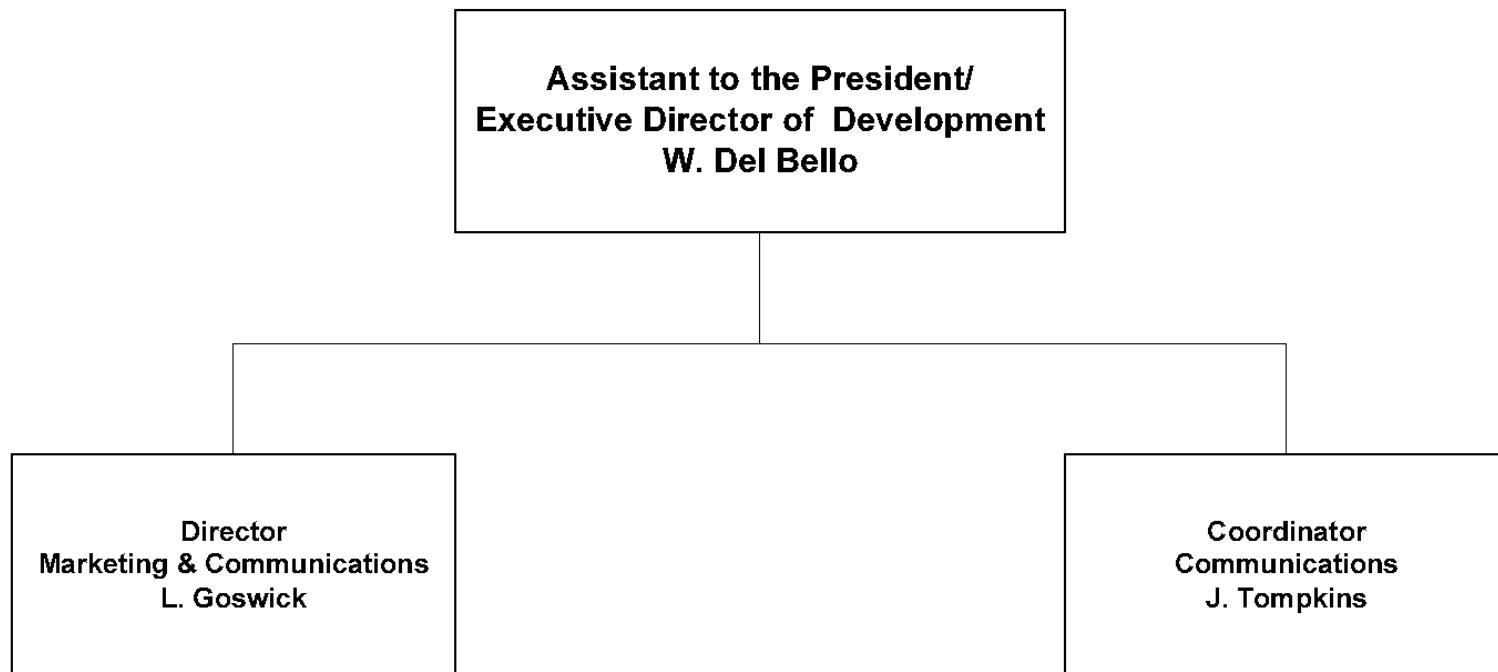
**ALVIN COMMUNITY COLLEGE
ORGANIZATIONAL CHART
REPORTING TO THE
DEAN OF CONTINUING EDUCATION WORKFORCE DEVELOPMENT**



**ALVIN COMMUNITY COLLEGE
ORGANIZATIONAL CHART
REPORTING TO THE
DEAN OF STUDENTS**



**ALVIN COMMUNITY COLLEGE
ORGANIZATIONAL CHART
REPORTING TO THE
ASSISTANT TO THE PRESIDENT/EXECUTIVE DIRECTOR OF DEVELOPMENT**



CHAPTER III

**ALVIN COMMUNITY COLLEGE
FOUNDATION**

A. ALVIN COMMUNITY COLLEGE FOUNDATION, INC.⁷

The Alvin Community College Foundation was established to support the College and its educational mission. Incorporated in 1974 under Texas law as a non-profit corporation, the Foundation is an independent entity that can receive donations and bequests. The foundation also sponsors projects that support student scholarships, faculty development, cultural events, and other advancement programs for the College.

The Foundation is organized to aid the College in three major areas: scholarships for students, support of professional development for ACC personnel, and cultural programs for the College and community. In addition, the Foundation is continually seeking ways to assist the college community through special projects.

All contributions and donations to the Foundation are tax-deductible (to the extent of the law). Donations and gifts from individuals or corporations are solicited for any ongoing program or for new programs which will benefit students and community citizens. The Foundation also accepts bequests and scholarships established as memorials.

Donors have the option of specifying whether their gifts will be for restricted or unrestricted use. Restricted gifts are designated (by the donor) for a specific purpose such as the Student Scholarship Fund. Unrestricted gifts become part of the Foundation's General Fund and are utilized for those purposes which the Foundation Directors deem the most worthy.

Cheryl Knappe is President of the Foundation, and is Richard Hawkins Vice President. Other officers are A. Rodney Allbright, Secretary; Joel Marin, Treasurer; and Wendy Del Bello, Executive Director. Paul Herndon is Immediate Past President of the organization.

Foundation Board Members include Shirley Brothers, Brenda Brown, Jim Crumm, Michael Culling, James B. DeWitt, Paul Doggett, Joyce Ellis, Sue Jernigan, David Jircik, Carol Nelson, Charles Stagg, Doyle Swindell, Rene Mondragon, Jody Droege, Mark Ferguson, 'Bel Sanchez, Darryl Stevens, L.P. "Pete" Nash, Matt Rickaway, Brenda Weber and Chris Patterson.

CHAPTER IV

**THE COLLEGE DISTRICT
AND
ADJOINING AREAS**

A. GENERAL DESCRIPTION

The Alvin Community College District includes 421.8 square miles and covers approximately the eastern third of Brazoria County. Major transportation corridors are: Highway 6, running WNW (toward San Antonio) and ESE (toward Texas City); and Highway 35, running north to Houston and south toward Angleton and Freeport. A significant geographical feature is Chocolate Bayou, which runs nearly the length of the District.

Brazoria County is a Gulf Coast county, the seat of which is located in Angleton. Geographically, the area is a coastal plain which is interlaced with numerous lakes, rivers, and bayous. The county's economy rests on agriculture, oil and gas production, and petrochemical manufacturing.

There are 16 buildings on the main campus of Alvin Community College. It is situated on 114 acres of land between Hwy 35 By-Pass and Mustang Road in Alvin. There are 8 buildings at the Alvin Community College - Pearland Center site, which is located on 5.2 acres at Grand and Broadway in Pearland.

B. THE CITY OF ALVIN

The City of Alvin is located in northeastern Brazoria County. Founded in 1879, Alvin is an established community which is beginning to experience rapid growth due to its proximity to Houston. Alvin is located 32 miles south/southeast of Houston and 33 miles northwest of Galveston.

City Profile (2012-2013):

Alvin Population (2013 estimate, within city limits) ¹²	25,261
Manvel Population (2013 estimate, within city limits) ¹²	5,910
Number of Schools (AISD* 2011-2012)¹³	24
Primary/Elementary Schools	14
Middle Schools	6
Senior High Schools	2
Alternative Schools	2

**Alvin Independent School District (AISD) includes Manvel.*

C. ALVIN COMMUNITY COLLEGE DISTRICT AND SERVICE AREA DEMOGRAPHICS ¹²

TABLE IV-1: POPULATION BY COUNT

Population	Alvin	Danbury	Friendswood	Liverpool	Manvel	Pearland	Santa Fe	Brazoria County
2018 Projection	26,172	2,015	37,818	509	6,860	114,198	14,264	356,116
2013 Estimate	25,261	1,931	36,562	494	5,910	97,024	13,103	328,415
2010 Census	24,226	1,712	35,805	482	5,246	90,934	12,220	313,166
2000 Census	22,045	1,512	29,720	418	3,168	45,415	10,799	241,951
Growth 2013-2018 (Projection)	3.6%	4.2%	3.4%	3.0%	16.1%	17.7%	8.9%	8.4%
Growth 2010-2018	8.0%	17.7%	5.6%	5.6%	30.8%	30.8%	16.7%	13.7%
Growth 2000-2010	9.8%	13.2%	20.5%	15.3%	65.6%	100.0%	13.2%	29.4%

TABLE IV-2: POPULATION BY AGE
(District and Service Area, 2013-2018 Trend)

Population by Age:	District and Service Area	
	2013	2018
Total Population	328,415	356,116
Age 0 - 4	7.8%	8.1%
Age 5 - 14	15.3%	15.1%
Age 15 - 19	6.9%	6.6%
Age 20 - 24	5.8%	5.7%
Age 25 - 34	3.7%	3.7%
Age 35 - 44	15.0%	14.7%
Age 45 - 54	14.7%	13.7%
Age 55 - 64	11.0%	11.5%
Age 65 - 74	5.9%	6.8%
Age 75 - 84	3.0%	3.1%
Age 85 +	1.0%	1.1%

TABLE IV-3: POPULATION BY HOUSEHOLD INCOME
(District and Service Area, 2013-2018 Trend)

Population by Household Income:	District and Service Area	
	2013	2018
Total Households	112,036	122,526
\$0 - \$19,999	13.4%	11.7%
\$20,000 - \$29,999	8.4%	7.8%
\$30,000 - \$39,999	8.3%	7.6%
\$40,000 - \$49,999	7.9%	7.4%
\$50,000 - \$74,999	17.2%	15.5%
\$75,000 - \$99,999	15.8%	16.3%
\$100,000 - \$149,999	18.8%	21.6%
\$150,000 +	10.2%	12.2%
Average Income	\$83,337	\$90,968
Median Income	\$66,804	\$74,995
Per Capita Income	\$28,819	\$31,658

TABLE IV-4: POPULATION BY GENDER
(District and Service Area, 2013-2018 Trend)

Population by Gender:	District and Service Area	
	2013	2018
Male	50.7%	50.6%
Female	49.3%	49.4%

TABLE IV-5: POPULATION BY RACE/ETHNICITY
(District and Service Area, 2013-2018 Trend)

Population by Race/Ethnicity:	District and Service Area	
	2013	2018
Total Population	328,415	356,116
White	69.4%	67.6%
Black	12.5%	14.0%
American Indian or Alaska Native	0.6%	0.6%
Asian or Pacific Islander	5.5%	6.0%
Other Race	9.0%	8.5%
Multi-Race	2.7%	2.9%
Hispanic Ethnicity	29.1%	31.0%

CHAPTER V

STUDENTS IN CREDIT PROGRAMS

A. ENROLLMENT DATA

**TABLE V-1:
ACC ENROLLMENT BY UNDUPLICATED HEADCOUNT¹⁵
FALL SEMESTERS 1953 - 2012**

Fall of	Headcount	Fall of	Headcount	Fall of	Headcount
1953	179	1973	1,900	1993	4,036
1954	168	1974	1,975	1994	3,864
1955	364	1975	2,480	1995	3,681
1956	403	1976	2,465	1996	3,873
1957	390	1977	2,655	1997	3,719
1958	421	1978	3,015	1998	3,435
1959	394	1979	2,775	1999	3,680
1960	579	1980	3,024	2000	3,531
1961	583	1981	3,035	2001	3,667
1962	721	1982	3,724	2002	4,161
1963*	954	1983	4,034	2003	4,049
1964	1,113	1984	3,937	2004	3,933
1965	1,638	1985	3,925	2005	3,828
1966	1,620	1986	3,918	2006	3,983
1967	1,617	1987	4,243	2007	4,091
1968	1,298	1988	4,152	2008	4,348
1969	1,257	1989	3,906	2009	5,189
1970	1,433	1990	3,892	2010	5,721
1971	1,808	1991	3,914	2011	5,193
1972	1,631	1992	4,085	2012	5,190

THECB PREP Enrollment headcounts exclude flexible entry students; contact and semester credit hours include flexible entry.)

TABLE V-2:
ACC TOTAL ENROLLMENT BY UNDUPLICATED HEADCOUNT¹¹
Fall 2005 - Summer 2012

(Table V-2 is formed by adding Table V-3 to Table V-4)

	2005-06	2006-07	2007-08	2008-09	2009-10	2010-11	2011-12
Fall	4,046	4,136	4,383	4,539	5,189	5,721	5,242
Spring	4,045	4,245	4,431	4,768	5,603	5,686	5,320
Summer	2,643	2,627	2,793	3,029	3,342	3,086	2,945
Grand Total	10,734	11,008	11,607	12,336	14,134	14,493	13,507

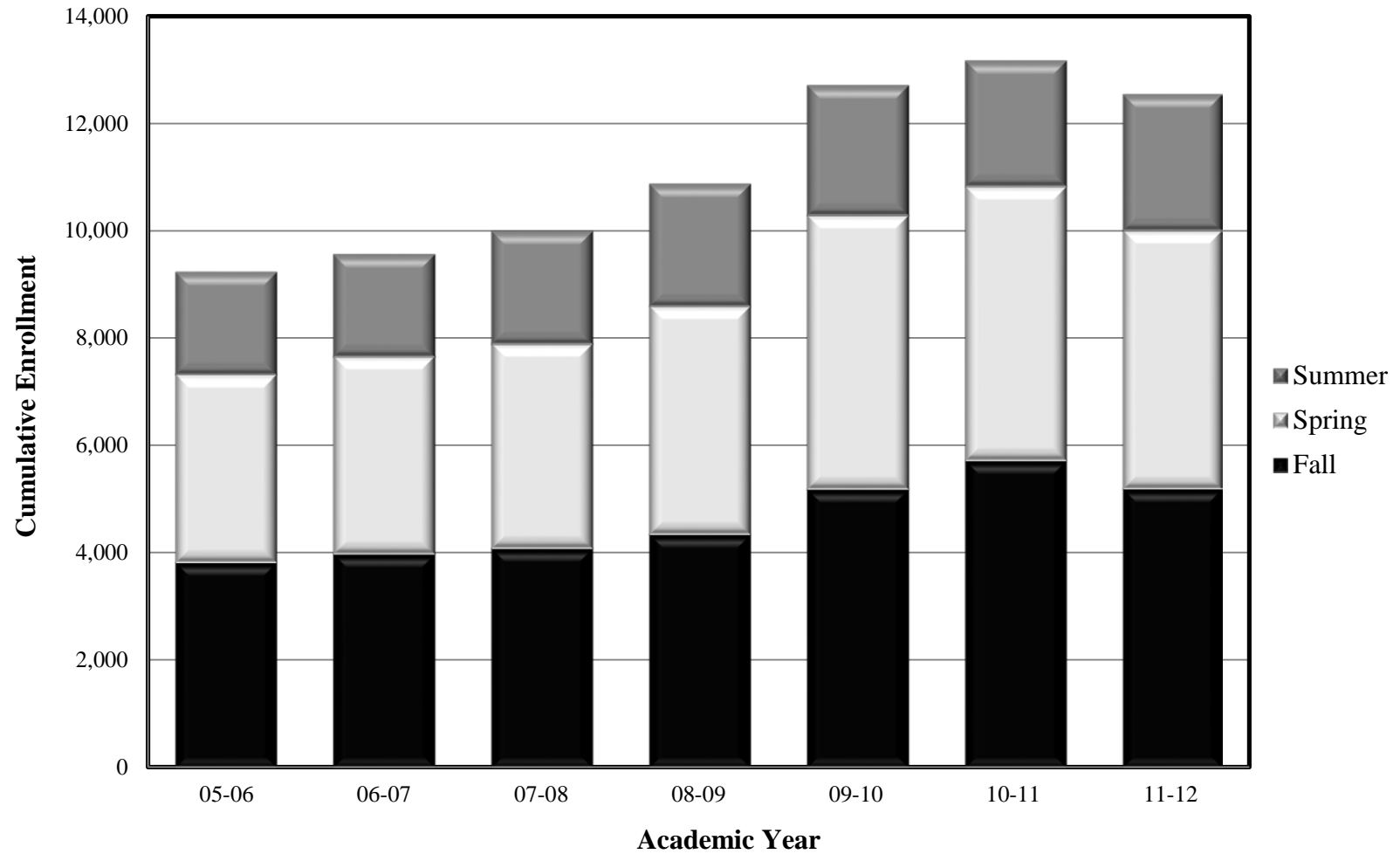
TABLE V-3:
ACC ENROLLMENT BY UNDUPLICATED HEADCOUNT¹⁵
Fall 2005 - Summer 2012

	2005-06	2006-07	2007-08	2008-09	2009-10	2010-11	2011-12
Fall	3,828	3,983	4,091	4,348	5,189	5,721	5,193
Spring	3,508	3,686	3,811	4,255	5,101	5,107	4,813
Summer	1,916	1,914	2,114	2,288	2,428	2,346	2,547
Sub-Total	9,252	9,583	10,016	10,891	12,718	13,174	12,553

TABLE V-4:
ACC FLEX ENTRY ENROLLMENT BY UNDUPLICATED HEADCOUNT¹¹
Fall 2005 – Summer 2012

	2005-06	2006-07	2007-08	2008-09	2009-10	2010-11	2011-12
Fall	218	153	292	191	0	0	49
Spring	537	559	620	513	502	579	507
Summer	727	713	679	741	914	740	398
Sub-Total	1,482	1,425	1,591	1,445	1,416	1,319	954

FIGURE V-1
Alvin Community College
Unduplicated Headcount: Fall 2005 - Summer 2012
(Excludes Flexible Entry)



**TABLE V-5:
CONTACT HOURS IN FALL SEMESTERS¹⁵**

Fall of	Total Funded and Non-State Funded Contact Hours
1989	761,056
1990	796,992
1991	801,136
1992	869,576
1993	831,584
1994	795,544
1995	753,208
1996	797,576
1997	738,576
1998	676,160
1999	713,376
2000	710,832

Fall of	Total Funded and Non-State Funded Contact Hours
2001	716,048
2002	827,024
2003	877,472
2004	884,432
2005	837,216
2006	865,696
2007	855,800
2008	810,984
2009	911,728
2010	1,002,560
2011	946,776
2012	935,136

THECB PREP Enrollment headcounts from the THECB exclude flexible entry students; contact and semester credit hours include flexible entry.

TABLE V-6:
ACC TOTAL FUNDED CONTACT HOURS¹¹
Fall 2005 – Summer 2012
 (Table V-6 is formed by adding Table V-7, Table V-8, and V-9)

	2005-06	2006-07	2007-08	2008-09	2009-10	2010-11	2011-12
Grand Total	2,045,424	2,081,808	2,141,304	2,143,912	2,363,344	2,430,304	2,303,760

TABLE V-7:
ACC ACADEMIC FUNDED CONTACT HOURS¹¹
Fall 2005 – Summer 2012

	2005-06	2006-07	2007-08	2008-09	2009-10	2010-11	2011-12
Fall	508,512	505,008	494,696	526,656	618,000	670,368	615,856
Spring	448,480	458,432	459,648	504,624	610,224	598,576	596,216
Summer	195,344	194,416	186,112	213,296	241,648	233,648	211,008
Sub-Total	1,152,336	1,157,856	1,140,416	1,244,576	1,469,872	1,502,592	1,423,080

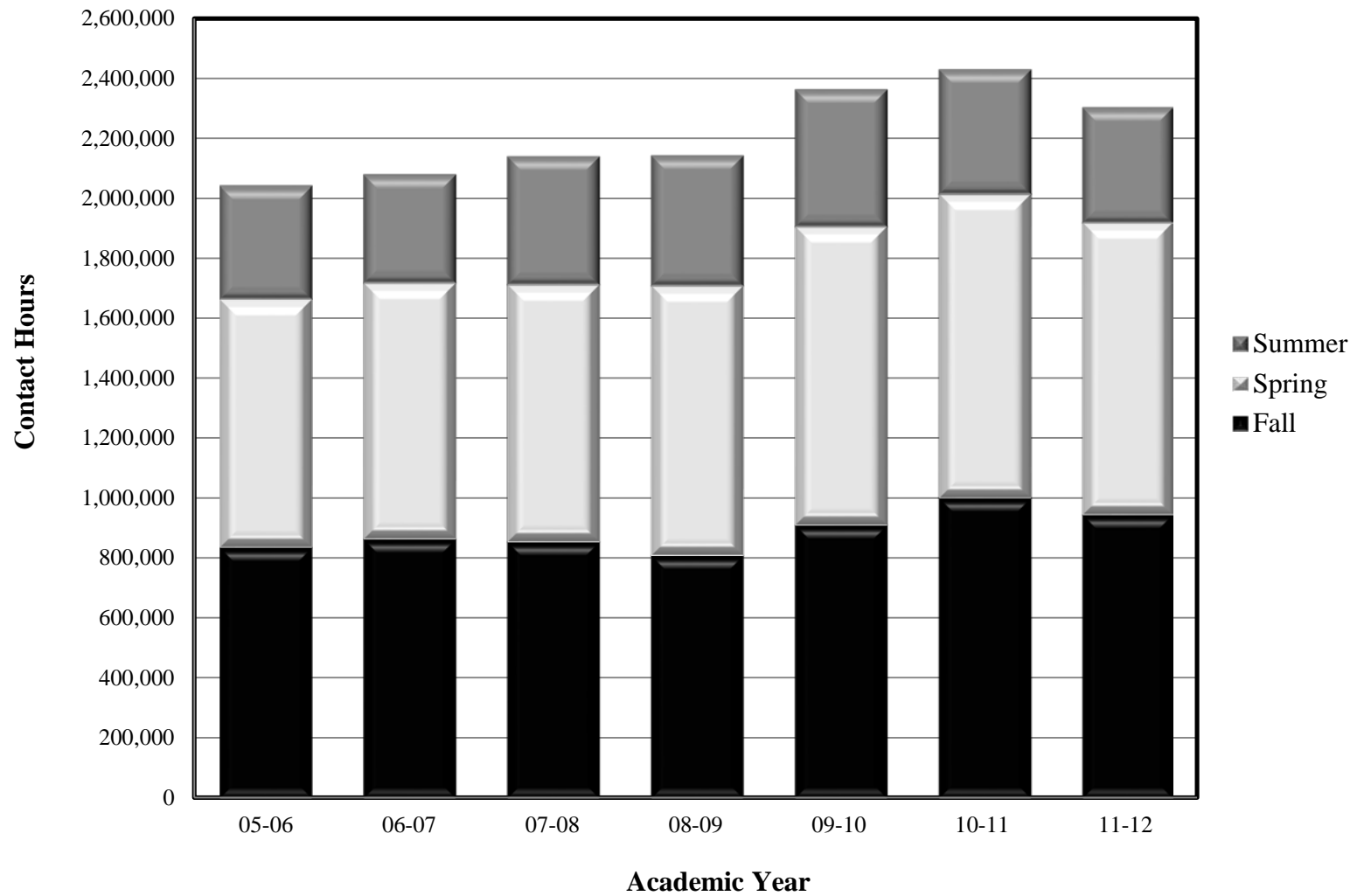
TABLE V-8:
ACC TECHNICAL FUNDED CONTACT HOURS¹¹
Fall 2005 – Summer 2012

	2005-06	2006-07	2007-08	2008-09	2009-10	2010-11	2011-12
Fall	315,040	352,016	351,384	274,872	283,440	321,344	321,048
Spring	366,512	386,688	389,960	387,248	376,736	406,968	367,400
Summer	178,992	164,064	237,064	215,520	210,288	176,840	168,888
Sub-Total	860,544	902,768	978,408	877,640	870,464	905,152	857,336

TABLE V-9:
ACC NON-STATE FUNDED CONTACT HOURS¹¹
Fall 2005 – Summer 2012

	2005-06	2006-07	2007-08	2008-09	2009-10	2010-11	2011-12
Fall	13,664	8,672	9,760	8,704	10,288	10,848	9,872
Spring	12,704	8,656	8,448	7,968	8,176	7,552	9,696
Summer	6,176	3,856	4,272	5,024	4,544	4,160	3,776
Sub-Total	32,544	21,184	22,480	21,696	23,008	22,560	23,344

FIGURE V-2
Alvin Community College
Contact Hour History: Fall 2005-Summer 2012
(Includes Funded, Non-funded, and Flexible Entry)



B. STUDENT CHARACTERISTICS

**TABLE V-10:
AGE AND GENDER TRENDS OF STUDENTS¹⁵**
(Includes TDCJ)

Fall of	Average Age	% 21 & Under	% Males	% Females
1989	26	43%	48%	52%
1990	26	44%	47%	53%
1991	26	44%	44%	56%
1992	26	41%	45%	55%
1993	26	40%	44%	56%
1994	27	39%	45%	55%
1995	27	41%	45%	55%
1996	26	43%	46%	54%
1997	26	45%	46%	54%
1998	26	45%	45%	55%
1999	27	45%	48%	52%
2000	26	47%	47%	53%
2001	26	48%	46%	54%
2002	26	46%	44%	56%
2003	26	49%	44%	56%
2004	26	48%	43%	57%
2005	26	48%	43%	57%
2006	26	48%	45%	55%
2007	25	51%	43%	57%
2008	24	55%	44%	56%
2009	24	58%	44%	56%
2010	24	56%	45%	55%
2011	25	53%	42%	58%
2012	24	58%	42%	58%

TABLE V-11:
RACE/ETHNICITY TRENDS OF STUDENTS¹⁵
(Includes TDCJ)

Fall of	White	Black	Hispanic	Other
1989	79%	8%	11%	2%
1990	80%	7%	11%	2%
1991	80%	7%	11%	2%
1992	80%	7%	12%	2%
1993	78%	7%	13%	2%
1994	76%	8%	13%	3%
1995	75%	8%	14%	3%
1996	74%	7%	16%	3%
1997	74%	7%	16%	3%
1998	73%	8%	17%	2%
1999	72%	8%	16%	4%
2000	72%	7%	17%	4%
2001	70%	8%	18%	4%
2002	70%	8%	18%	4%
2003	71%	7%	19%	3%
2004	71%	7%	18%	4%
2005	68%	7%	21%	3%
2006	67%	7%	22%	3%
2007	65%	8%	23%	4%
2008	63%	9%	23%	5%
2009	60%	10%	25%	5%
2010	58%	10%	25%	7%
2011	57%	10%	25%	8%
2012	55%	10%	28%	7%

TABLE V-12:
TUITION TRENDS OF STUDENTS¹⁵
(Includes TDCJ)

Fall of	% Of Students Paying In-District Tuition
1989	39%
1990	39%
1991	41%
1992	41%
1993	41%
1994	39%
1995	40%
1996	39%
1997	39%
1998	38%
1999	41%
2000	40%

Fall of	% Of Students Paying In-District Tuition
2001	41%
2002	41%
2003	45%
2004	47%
2005	47%
2006	46%
2007	45%
2008	45%
2009	52%
2010	45%
2011	48%
2012	45%

**TABLE V-13:
ENROLLMENT AGE TRENDS OF STUDENTS¹⁵**

Fall of	Under 18	18-21	22-24	25-30	31-35	36-50	51-64	65 & Over	Total
2000	6%	41%	12%	13%	8%	18%	2%	0%	100%
2001	7%	41%	11%	13%	8%	17%	3%	0%	100%
2002	8%	38%	13%	14%	8%	17%	2%	0%	100%
2003	10%	39%	13%	12%	8%	15%	2%	0%	99%
2004	9%	39%	14%	13%	8%	14%	2%	0%	99%
2005	10%	39%	14%	15%	8%	13%	2%	0%	101%
2006	11%	38%	13%	14%	8%	14%	3%	0%	101%
2007	14%	37%	12%	14%	7%	13%	2%	0%	99%
2008	21%	36%	11%	13%	7%	12%	2%	0%	101%
2009	25%	33%	10%	12%	6%	11%	2%	0%	99%
2010	25%	32%	10%	13%	7%	11%	2%	0%	100%
2011	23%	35%	10%	12%	7%	10%	2%	0%	99%
2012	23%	34%	11%	12%	7%	10%	2%	0%	99%

**TABLE V-14:
ENROLLMENT LEVEL TRENDS OF STUDENTS¹⁵**

Fall of	Freshman	Sophomore	Associate	Bachelors	Unclassified	Total
2000	67%	20%	2%	0%	11%	100%
2001	68%	19%	3%	0%	10%	100%
2002	69%	17%	1%	0%	12%	100%
2003	55%	26%	2%	1%	16%	100%
2004	65%	22%	2%	1%	11%	101%
2005	63%	21%	2%	1%	13%	100%
2006	63%	21%	1%	0%	15%	100%
2007	65%	20%	1%	0%	14%	100%
2008	71%	16%	3%	0%	9%	99%
2009	70%	17%	3%	1%	9%	99%
2010	69%	17%	3%	1%	10%	100%
2011	70%	17%	3%	1%	8%	99%
2012	65%	19%	4%	1%	11%	100%

C. ENROLLMENT PROJECTIONS¹⁵

TABLE V-15:
PROBABLE FUTURE UNDUPLICATED HEADCOUNT AND ACTUAL GROWTH
(Does not include flexible entry)

Fall of	Actual Headcount	1.0% Growth	1.5% Growth	2.0% Growth	Actual Growth
1989	3,906				-5.92%
1990	3,892				-0.36%
1991	3,914				0.57%
1992	4,085				4.37%
1993	4,036				-1.20%
1994	3,864				-4.26%
1995	3,681				-4.74%
1996	3,873				5.22%
1997	3,719				-3.98%
1998	3,435				-7.64%
1999	3,680				7.13%
2000	3,531				-4.05%
2001	3,667				3.85%
2002	4,161				13.47%
2003	4,049				-2.69%
2004	3,933				-2.86%
2005	3,828				-2.74%
2006	3,983				3.89%
2007	4,091				2.64%
2008	4,348				5.91%
2009	5,189				19.34%
2010	5,721				10.25%
2011	5,193				-9.23%
2012	5,190				-0.06%
2013		5,242	5,268	5,294	

**THECB PREP Enrollment headcounts from the THECB excludes flexible entry students; contact and semester credit hours include flexible entry.*

D. TEXAS DEPARTMENT OF CRIMINAL JUSTICE (TDCJ)

Alvin Community College provides postsecondary educational services to offender students in the following TDCJ units:

- ◆Clemens
- ◆Jester III
- ◆Ramsey I

Courses include general academic, technical, and workforce development programs.

ACC first offered TDCJ courses in 1965, and 90 offender students enrolled. In the spring of 1999, ACC was awarded a contract to provide “Youthful Offender” workforce development classes. Although inmate enrollment can fluctuate substantially from one year to the next, these changes seem to result from temporary, internal conditions at the units and revisions of TDCJ policies and procedures.

E. TECHNICAL PROGRAMS

**TABLE V-16:
TECHNICAL CREDIT HOURS¹⁵**
(Non-State Funded credit hours are not included)

Fall of	On-Campus Funded Technical Credit Hours	TDCJ Funded Technical Credit Hours	Total Funded Technical Credit Hours	% of All Funded ACC Credit Hours
1989	10,120	48	10,168	29%
1990	10,427	171	10,598	29%
1991	10,609	143	10,752	30%
1992	10,760	0	10,760	28%
1993	10,549	234	10,783	29%
1994	9,982	246	10,228	29%
1995	9,957	204	10,161	29%
1996	10,521	279	10,800	30%
1997	9,716	447	10,163	30%
1998	7,200	270	7,470	24%
1999	7,327	111	7,438	23%
2000	7,218	270	7,488	23%
2001	7,457	144	7,601	23%
2002	8,616	300	8,916	24%
2003	8,732	2,504	11,236	29%
2004	9,093	2,382	11,475	29%
2005	8,740	1,963	10,703	29%
2006**	-	-	11,405	-
2007**	-	-	11,990	-
2008**	-	-	9,496	-
2009**	-	-	9,748	-
2010**	-	-	11,006	-
2011**	-	-	10,863	-
2012**	-	-	11,233	-

*Only total credit hours were reported.

**THECB PREP no longer disaggregates data (2006). As the data are no longer disaggregated, the percent of funded hours cannot be accurately determined.

**TABLE V-17:
TECHNICAL CONTACT HOURS¹⁵**

Fall of	On-Campus Funded Technical Contact Hours	TDCJ Funded Technical Contact Hours	Total Funded Technical Contact Hours	% of All Funded ACC Contact Hours
1989	294,416	3,264	297,680	39%
1990	314,240	2,912	317,152	40%
1991	322,432	2,448	324,880	41%
1992	336,632	0	336,632	39%
1993	313,232	3,744	316,976	38%
1994	301,544	3,936	305,480	38%
1995	283,656	3,264	286,920	38%
1996	310,008	5,232	315,240	40%
1997	279,664	7,456	287,120	39%
1998	223,072	5,024	228,096	34%
1999	231,072	2,080	233,152	33%
2000	229,568	4,640	234,208	33%
2001	221,648	2,560	224,208	31%
2002	264,256	5,088	269,344	33%
2003	265,392	73,104	338,496	39%
2004	272,464	69,824	342,288	39%
2005	257,120	57,920	315,040	38%
2006**	-	-	353,536	-
2007**	-	-	351,384	-
2008**	-	-	274,872	-
2009**	-	-	283,440	-
2010**	-	-	321,344	-
2011**	-	-	321,048	-
2012**	-	-	332,912	-

**Only total credit hours were reported.*

***THECB PREP no longer disaggregates data (2006). As the data are no longer disaggregated, the percent of funded hours cannot be accurately determined*

F. ACADEMIC PROGRAMS

**TABLE V-18:
ACADEMIC CREDIT HOURS¹⁵**

Fall of	On-Campus Funded Academic Credit Hours	TDCJ Funded Academic Credit Hours	Total Funded Academic Credit Hours	% of All Funded ACC Credit Hours
1989	23,106	1,763	24,869	71%
1990	23,376	1,999	25,375	71%
1991	24,418	1,251	25,669	70%
1992	25,654	1,770	27,424	72%
1993	24,958	1,659	26,617	71%
1994	23,039	2,127	25,166	71%
1995	22,185	2,130	24,315	71%
1996	22,941	2,292	25,233	70%
1997	21,623	2,029	23,652	70%
1998	21,257	1,974	23,231	76%
1999	22,882	2,385	25,267	77%
2000	22,751	2,094	24,845	77%
2001	23,510	2,214	25,724	77%
2002	26,633	2,295	28,928	76%
2003	26,430	1,504	27,934	71%
2004	25,719	1,875	27,594	71%
2005	24,473	1,830	26,303	71%
2006**	-	-	26,432	-
2007**	-	-	25,763	-
2008**	-	-	27,951	-
2009**	-	-	32,872	-
2010**	-	-	35,511	-
2011**	-	-	32,578	-
2012**	-	-	31,462	-

**Only total credit hours were reported.*

*** THECB PREP no longer disaggregates data (2006). As the data are no longer disaggregated, the percent of funded hours cannot be accurately determined.*

**TABLE V-19:
ACADEMIC CONTACT HOURS¹⁵**

Fall of	On-Campus Funded Academic Contact Hours	TDCJ Funded Academic Contact Hours	Total Funded Academic Contact Hours	% of All Funded ACC Contact Hours
1989	430,928	32,448	463,376	61%
1990	438,864	40,976	479,840	60%
1991	453,888	22,368	476,256	59%
1992	502,544	30,400	532,944	61%
1993	486,896	27,712	514,608	62%
1994	451,296	38,768	490,064	62%
1995	429,680	36,608	466,288	62%
1996	442,432	39,904	482,336	60%
1997	415,120	36,512	451,632	61%
1998	414,016	34,048	448,064	66%
1999	438,688	41,536	480,224	67%
2000	440,320	36,176	476,496	67%
2001	453,040	38,448	491,488	69%
2002	515,760	40,480	556,240	67%
2003	511,024	24,672	535,696	61%
2004	501,120	31,168	532,288	61%
2005	477,936	30,576	508,512	62%
2006**	-	-	512,160	-
2007**	-	-	494,656	-
2008**	-	-	526,656	-
2009**	-	-	626,752	-
2010**	-	-	670,368	-
2011**	-	-	615,856	-
2012**	-	-	592,288	-

**Only total contact hours were reported.*

*** THECB PREP no longer disaggregates data (2006). As the data are no longer disaggregated, the percent of funded hours cannot be accurately determined. (Enrollment headcounts from the THECB exclude flexible entry students; contact and semester credit hours include flexible entry.)*

G. DEGREES AND CERTIFICATES EARNED

**TABLE V-20:
DEGREES/CERTIFICATES EARNED SINCE 1991-92¹⁵**

Fiscal Year	Associate Degrees	Certificates	Year Totals
1991-92	412	336	748
1992-93	455	388	843
1993-94	409	293	702
1994-95	412	229	641
1995-96	346	462	808
1996-97	337	463	800
1997-98	294	408	702
1998-99	329	242	571
1999-00	279	223	502
2000-01	301	264	565
2001-02	289	376	665
2002-03	381	332	713
2003-04	357	330	687
2004-05	384	303	687
2005-06	387	233	620
2006-07	421	424	845
2007-08	410	354	764
2008-09	405	400	805
2009-10	437	398	835
2010-11	524	403	927
2011-12	552	363	915
TOTALS	8,121	7,224	15,345

THECB PREP no longer disaggregates data (2006). The table has been updated to reflect this change.

CHAPTER VI

CONTINUING EDUCATION PROGRAMS

A. CONTINUING EDUCATION EXECUTIVE SUMMARY⁴

The Continuing Education Department strives to provide programs that incorporate current and new technical courses, training partnerships with business and industry, and opportunities for individuals to acquire and upgrade skills or seek personal enrichment.

With the ever changing economy and the rapid growth of Alvin Community College's (ACC) district and service area, Continuing Education (CE) is in constant transition. From marketing, to offerings, to community interaction and the need to be responsive to business and industry, CE is changing as surrounding communities do.

Female enrollments in Continuing Education courses accounted for 1,514 (46%) of all Continuing Education students and male enrollments were 1,766 (54%) in academic year 2011-2012.

An analysis of Continuing Education course enrollments by ethnicity showed the following:

Ethnicity	FY 2012
Caucasian	1,696
Black	208
Hispanic	464
Asian	123
Native American	17
International	1
Unknown	771
Total	3,280

B. CONTINUING EDUCATION PROGRAM ENROLLMENT DATA

ABE/GED/ESL⁴

Adult Basic Education (ABE) and General Education Development (GED) serve adults seventeen or older who have not finished high school. ABE offers instruction of grades 1 through 8. GED offers instruction of grades 9 through 12. English as a Second Language (ESL) serves non-English speaking citizens. ABE/GED/ESL are funded by Region IV E.S.C. and Alvin Community College. Additionally, the number of students served through TANF (Temporary Assistance to Needy Families) is recorded.

**TABLE VI - 1:
NUMBER OF STUDENTS SERVED**

	2005-06*	2006-07*	2007-08*	2008-09*	2009-10*	2010-11*	2011-12*
ABE	35	45	53	35	38	31	0
GED	408	202	160	173	200	165	173
ESL	134	169	146	153	178	0**	0**
TANF	24	10	10	24	8	0	0
TOTAL	601	426	369	385	424	196	173

**Includes Alvin Community College-Pearland Center students. **ACC no longer offers ESL classes through Continuing Education.*

Source: Datatel & CBM00A

C. WORKFORCE TRAINING PROGRAMS

**TABLE VI-2:
NUMBER OF STUDENTS SERVED THROUGH WORKFORCE TRAINING⁴**

(Workforce training and supplementary programming are supported by tuition and fees, contract training, contact hour reimbursement, and other institutional funds.)

List of Programs	2005-06	2006-07	2007-08	2008-09**	2009-10**	2010-11****	2011-12****
Air Conditioning	0	0	0	0	0	0	0
Auto Mechanics	0	0	0	0	0	0	0
Child Care	2	0	1	0	0	0	0
Clerical	0	0	0	0	0	0	0
Construction & Maintenance	0	0	0	0	0	0	0
Data Processing	263	188	104	192	343	235*	151*
Drafting	1	1	4	5	4	8	23
Floral	0	0	0	0	0	0	0
Food Service	50	0	0	3	0	0	0
Gen. Ind.	0	0	0	0	0	0	0
Health/Medical	920	978	890	815	1,274	1,490	1,108
Industrial/TSTC	0	0	0	0	14	32	85
Insurance/Bank/Finance	0	0	116	16	0	11	22
Law Enforcement	179	289	57	80	43	67	70
Machine Shop	0	5	0	0	0	0	0
Microcomputer Repair	0	0	0	0	0	0	0
Mid-Management	0	0	0	0	0	0	0
Personal Prot. & Safety	0	241	238	237	196	129***	105***
Petro/Chemical	0	21	0	0	0	0	0
Printing	0	0	0	0	0	0	0
Professional Development	1,746	5,450	2,400*	2,984*	1,106	847*	1,016*
Real Estate	821	573	262	310	350	218	102
Small Engine Repair	0	0	0	0	0	0	0
Transportation	18	26	22	12	28	12	17
Welding	211	228	143	197	191	146*	151*
TDCJ Enrollments	845	625	416	768	1,096***	372***	312***
Total	5,056	8,624	4,653	5,619	4,645	3,567	3,162

*Includes enrollments for Dish Network Training Series. **Includes enrollments for TWC POMSIG Grant Classes.

Includes both TDCJ and Brazoria County Juvenile Justice enrollments for 2009-2010. *Includes enrollment for PPC Grant Classes.

D. OTHER CONTINUING EDUCATION PROGRAMS

TABLE VI-3:
NUMBER OF AVOCATIONAL, RECREATIONAL, AND SPECIAL INTEREST STUDENT ENROLLMENTS⁴
(Support includes tuition, fees and other institutional funds.)

List of Programs	2004-2005	2005-2006	2006-2007	2007-2008	2008-2009	2009-2010	2010-2011	2011-2012
Art	30	18	21	11	17	1	10	10
Defensive Driving	0	0	0	0	0	264***	259	335
Cabinetmaking	0	0	0	0	0	0	0	0
Personal Development*	307	144	193	251	320	358	353	258
Foreign Language	51	36	18	8	3	92	15	26
Recreation & Phys. Ed.	223	232	248	263	225	381	346	392
Senior Adults**	312	264	249	124	180	224	125	130
Small Business	0	0	0	0	0	0	0	0
Special Interest	335	502	116	60	47	300*	152	170
Youth	452	482	465	334	257	275	49	27
TOTAL	1,710	1,678	1,310	1,051	1,049	1,895	1,309	1,348

*Includes GED and Ed2Go students (except Information Technology and Health & Medical courses).

**Does not include computer classes – that total is included in Data Processing.

*** This figure reflects the Motorcycle Safety enrollments for 2009-2010

E. ALL CONTINUING EDUCATION PROGRAMS COMBINED

**TABLE VI-4:
ALL CONTINUING EDUCATION STUDENTS ENROLLED⁴**

List of Programs	2003-04	2004-05	2005-06	2006-07	2007-08	2008-09	2009-10	2010-11	2011-12
ABE/GED/ESL/TANF	604	524	601	426	369	385	424	196	173
Workforce Training	4,324	4,550	5,056	8,624	4,653	5,619	4,645	3,567	3,162
Other	1,566	1,710	1,678	1,310	1,051	1,049	1,895	1,309	1,348
TOTAL	6,494	6,784	7,335	10,360	6,073	7,053	6,964	5,072	4,683

**TABLE VI-5:
CONTINUING EDUCATION CONTACT HOURS⁴**

	2003-04	2004-05	2005-06	2006-07	2007-08	2008-09	2009-10	2010-11	2011-12
QUARTER I	44,695	51,260	35,055	134,011	100,385	45,176	40,048	33,080	27,749
QUARTER II	35,014	48,114	32,104	95,666	28,354	33,102	28,460	24,522	19,831
QUARTER III	29,376	21,134	20,583	61,770	19,341	30,793	29,894	21,176	25,324
QUARTER IV	20,556	35,289	23,458	73,582	26,632	27,595	41,690	23,235	26,131
TOTAL*	129,641	155,797	111,200	365,029	174,712	136,666	140,092	102,013	99,035

**Total includes TDCJ Contact Hour and TWC Grant Courses for Dish Network Training Contact Hour which ended in Quarter I TWC Grant POMSIG classes started in Quarter IV.*

F. CENTER FOR PROFESSIONAL AND WORKFORCE DEVELOPMENT⁴

Workforce Development/Corporate Training Services

Alvin Community College offers corporate and workforce training through Continuing Education/Workforce Development (CEWD). The CEWD delivers quality and customer-focused consulting, training, and economic development services to individuals, business, and government agencies in order to address the needs of a diverse workforce. The CEWD provides business solutions, continuous learning strategies, and vital resources.

Areas of training include:

- Advanced Mathematics
- Communication
- Computer Software Training
- Customer Service
- Emergency Medical Technician Training
- English as a Second Language
- Financial Management
- Human Resource Development
- Industrial Electrical Technology
- Industrial Trade
- Occupational Health and Safety
- Occupational Spanish
- Soldering
- Supervision
- Team Building
- Time Management
- Welding
- and much more

The CEWD offers the resources and expertise and has a proven track record of providing training programs for companies both large and small. CEWD programs have made a significant contribution to the economic well-being of many local companies. A major advantage is the flexibility offered through customized training by the day, week or month, during or after hours. Training can be handled on-site, the Pearland Campus, Alvin Campus, or at any convenient site.

Human Resource Development Services

The CEWD has enhanced its service to the community by offering comprehensive staff development services. CEWD can provide comprehensive training needs analysis, job task analysis, individualized professional development plans, skill assessments, and much more.

Training Assessment and Curriculum from:

- Achieve Global (Zinger Miller)
- ACT WorkKeys
- Command Spanish
- Education 2 Go
- HRD Systems
- Net G
- PLATO
- The Texas Leadership Institute
- Worldwide Interactive Network (WIN)
- Ziegler Training Systems
- TSTC

Corporate Partners

The following companies have selected the Center for Professional and Workforce Development as a provider for corporate and workforce training needs:

- | | | |
|------------------------------------|--------------------------------|--|
| ➤ Alvin ISD | ➤ Frost Bank | ➤ Schlumberger |
| ➤ Alvin Manvel Chamber of Commerce | ➤ Hawkins Lease Service | ➤ Solutia Inc. |
| ➤ Agrekko | ➤ Homestead Inn | ➤ Solvents and Chemicals, Inc. |
| ➤ BP | ➤ Ineos | ➤ Team Industrial Service |
| ➤ Brazoria County | ➤ Input Output | ➤ Tele Flow, Inc. |
| ➤ Chocolate Bayou Credit Union | ➤ Joyce's Hallmark | ➤ Texas Department of Criminal Justice |
| ➤ City of Alvin | ➤ Kemlon | ➤ The Gulf Coast Center |
| ➤ City of Pearland | ➤ Lyondell | ➤ Third Coast Packing |
| ➤ CPI Group, Inc. | ➤ Packaging Services | ➤ Turbo Care |
| ➤ Dish Network | ➤ Pearland Chamber of Commerce | ➤ Union Planters Bank |
| ➤ Dow Chemical | ➤ Pearland ISD | ➤ Universal Weather |
| ➤ Dynamic Lighting | ➤ Radisson Hotel | ➤ Venoco |
| ➤ Equistar Chemical | ➤ Rice Tec | ➤ Pearland Neighborhood Center |

CHAPTER VII

STUDENT SERVICES

A. OFFICE OF ADMISSIONS AND ACADEMIC ADVISING⁹

The mission statement for the staff in the Office of Admissions and Academic Advising is “Serving Students to Promote Success.” Below are some statistics relating to how the Office of Admissions and Academic Advising served students in the 2011-12 academic year.

**TABLE VII-1:
ADVISING SESSIONS**

	Number of Sign-Ins		Number of Sign-Ins
Aug-10	2,730	Aug-11	2,855
Sep-10	1,179	Sep-11	939
Oct-10	1,035	Oct-11	960
Nov-10	1,783	Nov-11	1,547
Dec-10	8,70	Dec-11	956
Jan-11	2,053	Jan-12	1,935
Feb-11	771	Feb-12	722
Mar-11	806	Mar-12	674
Apr-11	1,365	Apr-12	1,383
May-11	1,332	May-12	1,432
Jun-11	1,323	Jun-12	1,161
Jul-11	1,886	Jul-12	2,150
Aug-11	2,855	Aug-12	2,981
Sep-11	939	Sep-12	968
Oct-11	960	Oct-12	1,228
Nov-11	1,547	Nov-12	1,573
Dec-11	956	Dec-12	1,105
TOTAL	24,390	TOTAL	24,569

COLLEGE DAY/NIGHT PROGRAMS:

2011-2012

- Alvin ISD
- Brazosport College
- Clear Creek ISD
- Dickinson High School
- LaMarque High School
- Pasadena/La Porte/Deer Park ISD's
- Pearland/Friendswood ISD's
- Santa Fe High School
- Texas City High School

COLLEGE DAY/NIGHT PROGRAMS:

2012-2013

- ACC
- Alvin ISD @ Alvin High School
- Angleton High School
- Brazoswood High School
- Brazosport High School @ Brazosport College
- Clear Creek ISD @ Clear Falls High School
- Danbury High School
- Dickinson High School
- La Marque High School
- Manvel High School
- Pasadena ISD, La Porte ISD, Deer Park ISD @ Pasadena's Convention Center
- Pearland/Friendswood Schools @ Friendswood High School
- Santa Fe High School
- Texas City High School

**TABLE VII-2:
TESTING CENTER
(Number of Tests Administered 2010-2011 and 2011-2012)**

Name of Test	Number of Tests Administered 2010-2011	Number of Tests Administered 2011-2012
COMPASS	3,456	3,768
Quick THEA	2,285	1,925
THEA	57	19
Residual ACT	1,888	1,700
National ACT	1,110	883
GED	1,059	1,754
Nursing	19	24
Correspondence	78	130
TOTAL	9,952	10,203

**TABLE VII-3:
DUAL CREDIT STUDENT ENROLLMENT**

	Dual Credit Enrollment (FA 10)	Dual Credit Enrollment (SP 11)	Dual Credit Enrollment (FA 11)	Dual Credit Enrollment (SP 12)	TOTAL
Alvin High School	472	416	324	298	1,510
Danbury High School	24	23	40	38	125
Living Stones High School	0	0	5	9	14
Manvel High School	319	337	320	298	1,274
Pearland High School	355	279	333	273	1,240
Glenda Dawson High School	239	184	141	113	677
TOTAL	1,409	1,239	1,163	1,029	--

**Dual Credit Student Enrollment is unduplicated.*

Career and Job Placement Statistics 2011-2012

Employers	1,655
Contacts	1,911
Jobs	427
Number of Employer log-ins	608
Students	2,914
• Alumni/Graduates	461
• Full/Part Time	2,272
• Pell Grant Eligible	341
Number of Student Log-ins	3,070
Referrals	580
Placements reported	28
Career Counseling/Advising	313-Career Counseling / 2,014-Advising
Total (contacts) services for career services	1,509

B. FINANCIAL ASSISTANCE⁹

The student financial aid program at Alvin Community College aims to provide financial assistance to eligible students and to help meet college expenses. Financial aid is awarded in the form of scholarships, grants, loans, and jobs according to financial need, academic grades, and academic load.

**TABLE VII-4:
FINANCIAL ASSISTANCE AND LOAN**

Type of Assistance	Total Financial Assistance
PELL	3,782,361
SEOG	61,904
TPEG	244,137
Federal Work Study	87,913
Texas Work Study	9,842
Texas Grant	117,907
Texas Educational Opportunity Grant	49,016
Direct Subsidized	1,207,806
Direct Unsubsidized	296,268
Alternative Loans	268,612
Total	6,125,766

C. STUDENT RECORDS⁹

The Registrar's Office, supervised by the Registrar, is the custodian of student records. Below are some statistics related to the work completed in the Registrar's Office & the Enrollment Services Center during the 2010-11 and 2011-12 academic years.

Admission Applications & Pertinent Documents*

	Fall 2010	Spring 2011	TOTAL (2010-2011)	Fall 2011	Spring 2012	TOTAL (2011-2012)
HS	955	385	1,340	996	447	1,443
EA	1,007	63	1,070	737	121	858
GED	224	147	371	164	142	306
TR	1,041	820	1,861	1,079	975	2,054
IND	43	32	75	48	34	82
TOTAL	3,270	1,447	4,717	3,024	1,719	4,743

*EA = Early Admission (dual credit), GED = GED graduate, TR = Transfer admissions, IND = Individual Approval (those without HS or GED)

Processes

	Fall 2010	Spring 2011	TOTAL (2010-2011)	Fall 2011	Spring 2012	TOTAL (2011-2012)
TR Transcripts Evaluated for Degree Seekers	491	362	853	752	942	1,694
Official ACC Transcripts *	4,203	4,419	8,622	3,830	3,552	7,382
Enrollment Verifications *	518	490	1,008	103	69	172*
Grade Changes	392	209	601	176	155	331
Graduation Applications	262	416	678	267	500	767
Auto Grads Processed	123	102	225	66	87	153**
TOTAL	5,989	5,998	11,987	5,194	5,305	10,499

*The NSCL began processing enrollment verification for ACC which left the ESC processing verifications for only students without a valid SSN.

**Financial Aid regulations changes went into effect which does not allow students to declare multiple programs simultaneously.

D. LIBRARY⁹

The Library provides support for all curricula offered by the college.

Library Statistics for 2011-2012

- 53 Periodical Subscriptions
- 1,586 Books Circulated
- 618 Reserves Circulated
- 84 Student Orientation Tours
- 3 Books and Articles Ordered through Inter-Library Loan
- 27,605 Database logins
- 156,619 Database searches
- 520 Reference Questions
- 1,211 Students

E. UPWARD BOUND⁹

Upward Bound is a federally-funded college preparatory program for low-income students whose parents do not have a Bachelor's degree. By selecting only those students who have the potential to succeed in college, but face these demographic obstacles to their success, Upward Bound is able to actually make a difference in a student's life. All ACC Upward Bound students must be enrolled at Alvin High School. In compliance with the Department of Education requirements, ACC Upward Bound serves no more than 50 students at any given time.

- Upward Bound students and graduates have completed 26,014 contact hours here at ACC.
- The Texas Higher Education Coordinating Board Fact Book reports that 55% of Alvin High School graduates enter college. 81% of the Alvin High School students who make up our Upward Bound program enter college.
- Texas Education Agency's data indicates that 63% of students at Alvin High School are college-ready as determined by the Texas Success Initiative. 89% of Alvin Community College Upward Bound seniors are college-ready by that same measure.
- The fall-to-fall retention in the State of Texas (Entering Cohort 2008) is 67%, while that same retention rate for ACC is 67%. Our Upward Bound students have an 83% fall-to-fall retention at their respective institutions.
- 100% of all Upward Bound participants achieved proficient level on state assessments in reading/language arts and math.
- 95% of project participants continued to participate in the project during the following school year.
- 77% of all Upward Bound graduates enrolled in a program of post-secondary education by the fall term immediately following high school graduation.
- 87% of participants who enrolled in a program of post-secondary education remained enrolled for the fall term of the second academic year.

Taken simply at face value, this data would be worth noticing. But if we add in the fact that all Upward Bound students represent a demographic cohort which is among the least likely to enter or succeed in college, then we are looking at the faces of success.

F. OFFICE OF STUDENT ACTIVITIES⁹

The Office of Student Activities plans and implements extra-curricular activities that enrich campus life, develop well-rounded individuals, and enhance students' identification with the institution. Listed below are some of the activities for the 2012-2013 academic year.

EVENTS

- Party on the Patio Back to School Bash
- Dolphin Wing Fling
- Blue's Birthday Bash
- Constitution Day
- Drug and Alcohol Awareness Week (fall and spring)
- Club Fair and Ice Cream Social
- Hispanic Heritage Celebration
- Breast Cancer Awareness
- Fall Festival
- Veteran's Week
- An Evening of Big Band
- President's Forum
- Finals Survival Study Packs
- Race to the Workplace: Job Readiness Week
- I Heart ACC: Valentine's Day Party
- Commit to Complete Rally
- Voter Registration Drive
- Annual Student Leadership Conference
- ACC Open House
- ACC Bank Fair

CHAPTER VIII

**ALVIN COMMUNITY COLLEGE -
PEARLAND CENTER**

A. INTRODUCTION AND HISTORY¹⁰

In 1997-98, the Alvin Community College Board of Regents concluded an agreement with the Pearland Independent School District for the lease/purchase of the C.J. Harris Elementary School. The 5.2 acre site, located at 2319 North Grand Boulevard and Broadway in Pearland, was converted to create the Alvin Community College - Pearland Center.

The campus consists of eight buildings. The classrooms in Building 1 and the Library were converted first, in time for the fall 1998 opening. Subsequent renovations were made to the cafeteria and Building 3 later during the 1998-99 academic year.

In 2001 Alvin Community College – Pearland Center was awarded a one million dollar HUD Grant. Renovations were made to the Theatre, Building #5, and the Administration Building which enabled the opening of the entire center.

When the Pearland Center opened in the fall of 1998, courses were offered in both academic and technical programs, as well as in continuing education. In the summer of 2004 the University of Houston–Clear Lake and Alvin Community College began their higher education partnership by offering three classes at the Pearland Center.

In the fall of 2008, Alvin Community College entered into a partnership with the Texas State Technical College (TSTC) to offer Advanced Manufacturing/Engineering Technology Training and the Pearland Center cafeteria was renovated to become an Advanced Manufacturing Technologies training lab. Certification for Welding-Mechanical Specialist, Hydraulics-Mechanical Systems Specialist and Industrial Electrical-Programmable Logic Controls Specialist began in the spring of 2009.

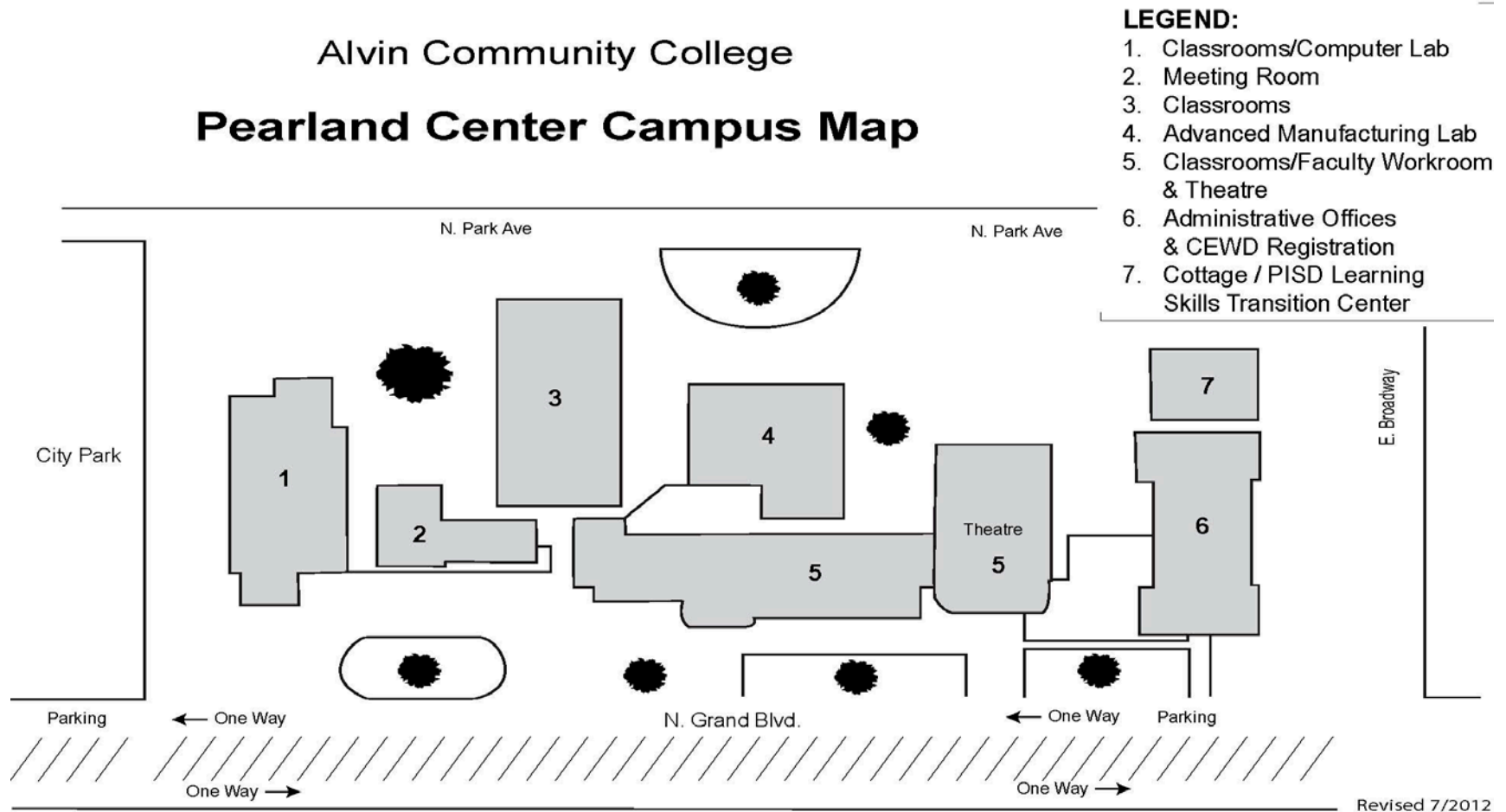
**TABLE VIII-1:
PC ANNUAL ENROLLMENT**

Fiscal Year	Credit Enrollment (PC COMBINED*)	Continuing Education Enrollment
2000-2001	777	1,107
2001-2002	805	1,389
2002-2003	834	1,008
2003-2004	619	1,356
2004-2005	457	1,222
2005-2006	335	1,625**
2006-2007	257	1,011
2007-2008	46	1,057
2008-2009	100	1,117
2009-2010	157	1,263
2010-2011	248	605
2011-2012	299	566

**Includes students taking classes at both PC and ACC locations*

***Includes Lunch & Learn series held at the Pearland Center Campus*

B. ALVIN COMMUNITY COLLEGE – PEARLAND CENTER SITE MAP



C. ALVIN COMMUNITY COLLEGE – PEARLAND CENTER CAMPUS BUILDINGS

**TABLE VIII-2:
ACC-PC CAMPUS BUILDINGS¹⁰**

Date of Completion	Building No.	Classrooms	Gross Square Footage	Net Assignable Space
1965	1	Classrooms	10,383	6,540
1966	2	Library	2,554	1,160
1964	3	Classrooms	10,500	6,615
1969	4	Cafeteria	7,075	4,460
1945	5	Auditorium/classroom	17,517	11,035
1937	6	Administration	6,532	4,115
1942	7	ACC-PC rental	1,496	950
1942	8	Pottery	480	400
TOTAL ALL STRUCTURES			56,537	35,725

D. PEARLAND CENTER ENROLLMENT HISTORY

**TABLE VIII-3:
PC ONLY HEADCOUNT¹¹**

(Includes students at Pearland Center, YMCA, WWW, TV locations only)

YEAR	FALL	SPRING	SUMMER	TOTAL	% CHANGE*
2001-02	201	250	154	605	-2.6%
2002-03	217	222	113	552	-8.8%
2003-04	95	67	37	199	-63.9%
2004-05	69	61	31	161	-19.1%
2005-06	49	47	17	113	-29.8%
2006-07**	50	68	18	136	+20.3%
2007-08	12	21	4	37	-72.8%
2008-09	16	32	28	76	+105.4%
2009-10	22	43	18	83	+9.2%
2010-11	32	28	31	91	+9.6%
2011-12	34	22	53	109	+19.8%

*% Change is between each fiscal year.

** The increases in enrollment and contact hours are attributed to Workforce/Technical EMT classes.

**TABLE VIII-4:
PC ONLY CONTACT HOURS¹¹**

(Includes students at Pearland Center, YMCA, WWW, TV locations only)

YEAR	FALL	SPRING	SUMMER	TOTAL	% CHANGE*
2001-02	24,512	27,856	12,560	64,928	-18.3%
2002-03	28,768	26,256	10,192	65,216	+0.4%
2003-04	12,080	6,304	4,496	22,880	-64.9%
2004-05	6,912	5,456	2,480	14,848	-35.1%
2005-06	5,616	3,952	1,360	10,928	-26.4%
2006-07**	5,360	14,048	2,256	21,664	+97.3%
2007-08	2,064	5,693	944	8,701	-59.8%
2008-09	2,544	6,592	3,136	12,272	+41.0%
2009-10	3,376	5,952	992	10,320	-18.9%
2010-11	5,488	6,064	2,000	13,552	+31.3%
2011-12	3,408	1,520	3,056	7,984	-41.1%

*% Change is between each fiscal year.

** The increases in enrollment and contact hours are attributed to Workforce/Technical EMT classes.

TABLE VIII-5:
PC COMBINED HEADCOUNT¹¹
(Includes students taking classes at both PC and ACC locations)

YEAR	FALL	SPRING	SUMMER	TOTAL	% CHANGE*
2001-02	316	314	175	805	+3.6%
2002-03	335	348	151	834	+3.6%
2003-04	295	258	66	619	-25.8%
2004-05	196	198	63	457	-26.2%
2005-06	174	124	37	335	-26.7%
2006-07	134	106	17	257	-23.3%
2007-08	20	18	8	46	-82.1%
2008-09	29	52	19	100	+117.4%
2009-10	42	82	33	157	+57.0%
2010-11	99	90	59	248	+58.0%
2011-12	99	125	36	260	+4.8%

*% Change is between each fiscal year.

TABLE VIII-6:
PC COMBINED CONTACT HOURS¹¹
(Includes students taking classes at both PC and ACC locations)

YEAR	FALL	SPRING	SUMMER	TOTAL	% CHANGE*
2001-02	30,000	30,592	15,296	75,888	-4.2%
2002-03	32,624	31,104	12,256	75,984	+0.1%
2003-04	24,272	21,856	4,912	51,040	-32.8%
2004-05	16,832	17,632	6,208	40,672	-20.3%
2005-06	14,896	10,928	3,712	29,536	-27.4%
2006-07	11,616	9,008	1,872	22,496	-23.8%
2007-08	3,456	4,384	1,568	9,408	-58.2%
2008-09	2,608	7,408	1,392	11,408	+21.3%
2009-10	3,472	9,648	3,056	16,176	+41.7%
2010-11	6,832	10,848	5,280	22,960	+41.9%
2011-12	8,160	11,088	3,136	22,384	-2.5%

*% Change is between each fiscal year.

**TABLE VIII-7:
PC TOTAL HEADCOUNT¹¹**

(Includes students taking classes at Pearland only plus the Pearland combined count)

YEAR	FALL	SPRING	SUMMER	TOTAL	% CHANGE*
2001-02	517	564	329	1,410	+0.9%
2002-03	552	570	264	1,386	-1.7%
2003-04	390	325	103	818	-41.0%
2004-05	265	259	94	618	-24.4%
2005-06	223	171	54	448	-27.5%
2006-07	184	174	35	393	-12.3%
2007-08	32	39	12	83	-78.9%
2008-09	45	84	47	176	+112.0%
2009-10	64	125	51	240	+36.4%
2010-11	131	118	90	339	+41.3
2011-12	133	147	89	369	+8.8%

**% Change is between each fiscal year.*

**TABLE VIII-8:
PC TOTAL CONTACT HOURS¹¹**

(Includes students taking classes at Pearland only plus the Pearland combined count)

YEAR	FALL	SPRING	SUMMER	TOTAL	% CHANGE*
2001-02	54,512	58,448	27,856	140,816	-11.2%
2002-03	61,392	57,360	22,448	141,200	+0.3%
2003-04	36,352	28,160	9,408	73,920	-47.6%
2004-05	23,744	23,088	8,688	55,520	-24.9%
2005-06	20,512	14,880	5,072	40,464	-27.1%
2006-07	16,976	23,056	4,128	44,160	+8.4%
2007-08	5,520	10,080	2,512	18,112	-59.0%
2008-09	5,152	14,000	4,528	23,680	+30.7%
2009-10	6,848	15,600	4,048	26,496	+11.9%
2010-11	12,320	16,912	7,280	36,512	+37.8%
2011-12	11,568	12,608	6,192	30,368	-16.8%

**% Change is between each fiscal year.*

**TABLE VIII-9:
FUNDED PC CONTINUING EDUCATION ENROLLMENTS¹⁰**

YEAR	QUARTER I	QUARTER II	QUARTER III	QUARTER IV	TOTAL	% CHANGE*
2002-03	160	200	99	91	550	-40.5%
2003-04	225	213	169	167	774	+40.7%
2004-05	207	145	33	65	450	-41.9%
2005-06	96	126	109	148	479	+6.4%
2006-07	165	178	123	54	520	+8.6%
2007-08	257	184	174	56	671	+29.0%
2008-09	153	274	164	128	719	+7.20%
2009-10	322	150	229	249***	950***	+32.13%
2010-11	196	97	108	66	467	-50.84%
2011-12	160	78	122	126	486	+4.07%

* % Change is between each fiscal year. ** Data not available. ***Numbers updated by Continuing Ed.

**TABLE VIII-10:
NON-FUNDED PC CONTINUING EDUCATION ENROLLMENTS¹⁰**

YEAR	QUARTER I	QUARTER II	QUARTER III	QUARTER IV	TOTAL	% CHANGE*
2002-03	81	105	1	271	458	-16.0%
2003-04	75	159	53	295	582	+27.1%
2004-05	134	151	64	423	772	+32.6%
2005-06	192***	187	156***	611	1,146***	+48.4%
2006-07	128	42	34	287	491	-57.16%
2007-08	36	103	68	179	386	-21.4%
2008-09	117	85	70	126	398	+3.10%
2009-10	72****	86	1	154****	313****	-21.36%
2010-11	65	42	18	13	138	-55.91%
2011-12	13	36	13	18	80	-42.03%

*% Change is between each fiscal year. ** Data not available.

*** Includes Lunch and Learn series held at Pearland Center Campus. ****Numbers updated by Continuing Ed.

**TABLE VIII-11:
TOTAL PC CONTINUING EDUCATION ENROLLMENTS¹⁰**

YEAR	QUARTER I	QUARTER II	QUARTER III	QUARTER IV	TOTAL	% CHANGE*
2002-03	241	305	100	362	1,008	-27.4%
2003-04	300	372	222	462	1,356	+34.5%
2004-05	341	296	97	488	1,222	-9.9%
2005-06	288**	313	265**	759	1,625	+33.0%
2006-07	293	220	157	341	1,011	-37.8%
2007-08	293	287	242	235	1,057	+4.5%
2008-09	270	359	234	254	1,117	+5.7%
2009-10	394***	236	230	403***	1,263***	+13.08%
2010-11	261	139	126	79	605	-52.09%
2011-12	173	114	135	144	566	-6.45%

*% Change is between each fiscal year. ** Includes Lunch and Learn series held at Pearland Center Campus.

***Numbers updated by Continuing Ed.

**TABLE VIII-12:
FUNDED PC CONTINUING EDUCATION CONTACT HOURS¹⁰**

YEAR	QUARTER I	QUARTER II	QUARTER III	QUARTER IV	TOTAL	% CHANGE*
2002-03	7,942	8,926	2,250	4,166	23,284	-26.9%
2003-04	9,624	10,531	4,978	5,812	30,945	+32.9%
2004-05	10,387	7,578	1,171	3,258	22,394	-27.6%
2005-06	5,452	4,986	2,772	5,787	18,837	-15.9%
2006-07	3,712	7,133	2,995	1,674	15,514	-17.6%
2007-08	7,780	6,340	4,553	1,330	20,003	+28.9%
2008-09	3,782	9,313	2,803	8,317	24,215	+21.0%
2009-10	10,562	4,048***	10,587***	9,558***	34,755***	+43.53
2010-11	7,568	8,718	2,524	4,682	23,510	-32.36%
2011-12	8,938	4,864	6,278	7,626	27,706	+17.85%

*% Change is between each fiscal year. ** Data not available. ***Numbers updated by Continuing Ed.

**TABLE VIII-13:
NON-FUNDED PC CONTINUING EDUCATION CONTACT HOURS¹⁰**

YEAR	QUARTER I	QUARTER II	QUARTER III	QUARTER IV	TOTAL	% CHANGE*
2002-03	4,470	5,770	2	5,520	15,762	-4.3%
2003-04	3,261	5,420	110	4,248	13,039	-17.3%
2004-05	4,144	4,761	120	4,006	13,031	-0.1%
2005-06	3,344	4,056	377	5,372	13,335	+2.3%
2006-07	3,815	1,464	1,364	3,386	10,029	-24.8%
2007-08	3,450	2,284	2,527	3,495	11,756	+17.3%
2008-09	3,337	2,373	2,012	556	8,278	-29.6%
2009-10	2,504	3,548	6	2,702***	8,760***	+5.82%
2010-11	2,866	2,088	1,080	46	6,080	-30.59%
2011-12	780	1,519	608	204	3,111	-48.83%

*% Change is between each fiscal year. ** Data not available. ***Numbers updated by Continuing Ed.

**TABLE VIII-14:
TOTAL PC CONTINUING EDUCATION CONTACT HOURS¹⁰**

YEAR	QUARTER I	QUARTER II	QUARTER III	QUARTER IV	TOTAL	% CHANGE*
2002-03	12,412	14,696	2,252	9,686	39,046	-19.2%
2003-04	12,885	15,951	5,088	10,060	43,984	+12.6%
2004-05	14,531	12,339	1,291	7,264	35,425	-19.5%
2005-06	8,796	9,042	3,194***	11,159	32,172***	-9.2%
2006-07	7,527	8,597	4,359	5,060	25,543	-20.6%
2007-08	11,230	8,624	7,080	4,825	31,759	+24.3%
2008-09	7,719	11,686	4,815	8,873	32,493	+2.3%
2009-10	13,066	7,596****	10,593****	12,260****	43,515****	+33.92%
2010-11	10,452	10,806	3,604	4,728	29,590	-32.00%
2011-12	9,718	6,383	6,886	7,830	30,817	+4.15%

* % Change is between each fiscal year. ** Data not available.

*** Includes Lunch and Learn series held at Pearland Center Campus. ****Numbers updated by Continuing Ed.

CHAPTER IX

PERSONNEL

A. EEO POLICY STATEMENT⁸

Alvin Community College is an equal opportunity institution and does not discriminate against anyone on the basis of race, religion, color, sex, disability, age, or national origin.

B. DEMOGRAPHICS OF FACULTY AND STAFF, 2011-2012⁸

**TABLE IX-1:
AGE DISTRIBUTION OF FACULTY AND STAFF**

	Full-Time Administrative Staff		Full-Time Professional Staff		Full-Time Faculty		Full-Time Technical Support, Clerical & Maintenance Staff		Total	Total Percentage
25 & Under	0	0%	0	0%	1	1%	0	1%	1	0%
26-30	0	0%	0	0%	1	1%	8	7%	9	7%
31-35	0	0%	9	17%	6	6%	8	9%	23	7%
36-40	1	10%	6	11%	13	12%	12	12%	32	11%
41-45	2	20%	5	9%	12	11%	14	10%	33	13%
46-50	1	10%	11	21%	8	18%	15	20%	35	14%
51-55	1	10%	5	9%	13	20%	24	19%	43	22%
56-60	1	10%	10	19%	24	17%	13	8%	48	12%
61-65	2	20%	5	9%	13	10%	5	8%	25	5%
66 & Over	2	20%	2	4%	17	16%	8	5%	29	7%
Total	10	100%	53	100%	108	100%	107	100%	278	100%

**TABLE IX-2:
GENDER DISTRIBUTION OF FACULTY AND STAFF**

	Full-Time Administrative Staff		Full-Time Professional Staff		Full-Time Faculty		Full-Time Technical Support, Clerical & Maintenance Staff		Total	Total Percentage
Male	6	60%	19	36%	46	43%	25	23%	96	35%
Female	4	40%	34	64%	62	57%	82	77%	182	65%
Total	10	100%	53	100%	108	100%	107	100%	278	100%

**TABLE IX-3:
RACIAL/ETHNIC DISTRIBUTION OF FACULTY/STAFF**

	Full-Time Administrative Staff		Full-Time Professional Staff		Full-Time Faculty		Full-Time Technical Support, Clerical & Maintenance Staff		Total
White, Non-Hispanic	9	90%	39	74%	98	91%	65	61%	211
Hispanic	1	10%	7	13%	6	6%	36	34%	50
Black	0	0%	6	11%	3	3%	4	3%	13
Other	0	0%	1	2%	1	1%	2	2%	4
Total	10	100%	53	100%	108	100%	107	100%	278

**TABLE IX-4:
QUALIFICATIONS OF FACULTY**

	Percent of Full-Time Technical Faculty Who Have Earned:	Percent of Full-Time Academic Faculty Who Have Earned:
Less than Baccalaureate Degree	27%	0%
Baccalaureate Degree	27%	7%
Master's Degree	38%	64%
Doctorate	8%	29%

**TABLE IX-5:
EXPERIENCE OF FACULTY**

Average Number of Years at ACC for Full-Time Technical Faculty	21 years
Average Number of Years at ACC for Full-Time Academic Faculty	8 years

CHAPTER X

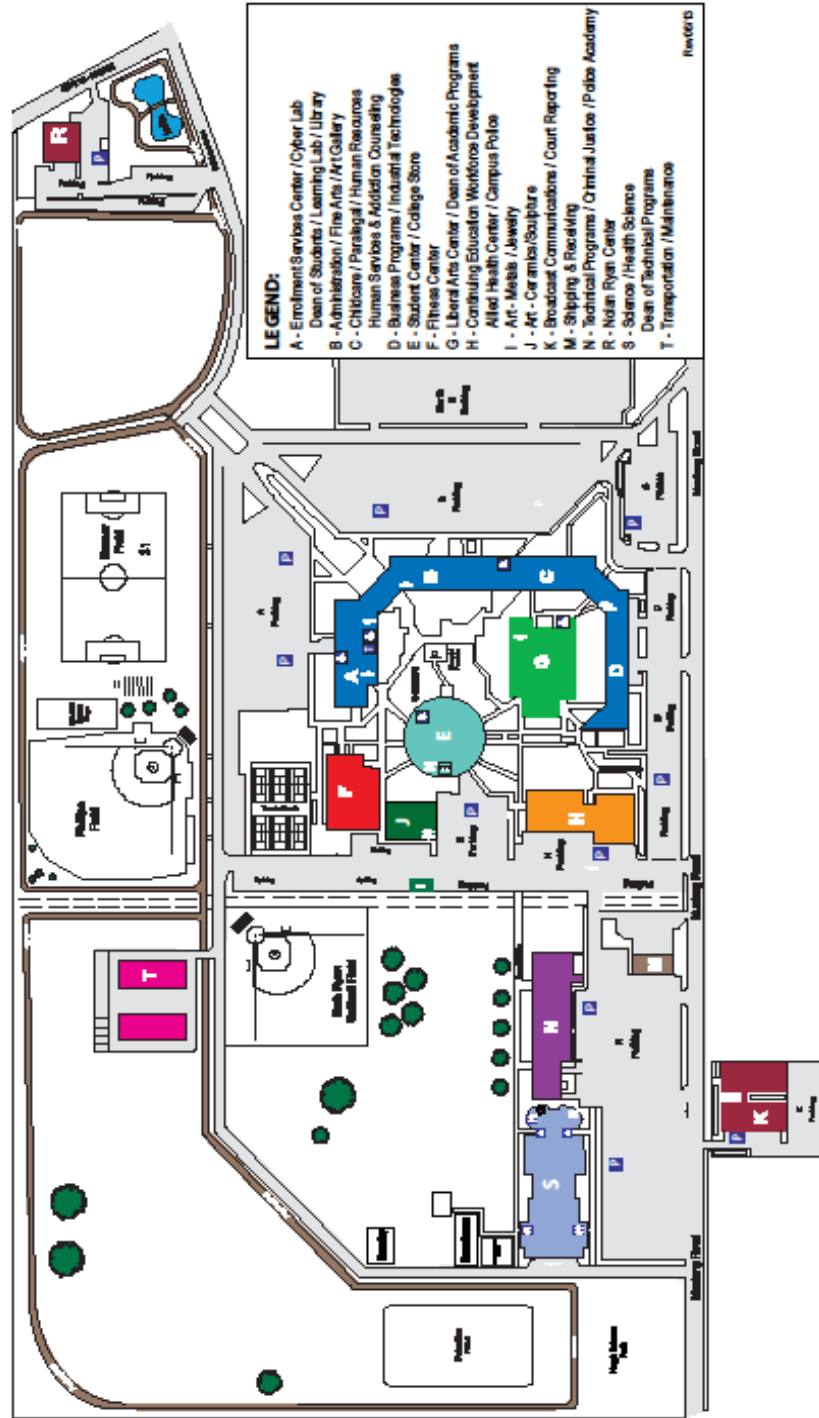
FACILITIES AND PHYSICAL PLANT

A. Alvin Community College Campus Map



ALVIN COMMUNITY COLLEGE

CAMPUS MAP



B. ALVIN COMMUNITY COLLEGE CAMPUS BUILDINGS

**TABLE X-1:
ACC CAMPUS BUILDINGS⁵**

Date of Completion	Building	Gross Square Footage	Net Assignable Space
Classroom Office Buildings			
1977	Building A, B, C, & D - Megastructure	168,901	106,758
1963	Building G - Liberal Arts Center	35,100	23,660
1963	Building H - Natural Science Center	21,034	13,510
2008	Building J – Art Dept Sculpture/Ceramics	5,000	4,800
1982*	Building K - Court Reporting/KACC	21,620	19,960
1984	Building N - Occupational/Technical	36,881	18,353
1996	Building R - Nolan Ryan Center	12,083	8,583
2007	Building S – Science/Health Science	98,790	59,178
Other Structures			
1987	Athletic Concession Stand - Boys Baseball	579	324
1998	Athletic Concession Stand - Girls Softball	850	275
2010	Baseball Field House	1,428	1,428
1963	Building E - Student Center	19,160	14,875
1977	Building F - Gymnasium/Fitness Center	21,882	19,064
1963**	Building I - Art Department	1,120	901
1980	Building M - Shipping/Receiving	7,041	6,491
1994	Building T - Transportation Maintenance	11,000	11,000
2009	General Storage Building – T	342	342
2010	Greenhouse	1,800	1,800
2013	Greenhouse Storage Building	400	320
2010	Observatory	200	200
Total All Structures		465,211	311,822

*Renovated for academic use in 1992.

**Renovated in 1999

C. PARKING LOTS AND PLAYING FIELDS

**TABLE X-2: Parking Spaces
PARKING LOTS⁵**

Parking Lots	Student Spaces	Staff Spaces	Handicap Spaces	Total
A Lot	226	58	5	289
B Lot	317	122	5	444
B Lot, North	341	0	0	341
C Lot	100	0	1	101
D Lot	133	53	2	188
D Lot, Motorcycle Pad	6	0	0	6
E Lot	82	19	5	106
E Lot, Motorcycle Pad	7	0	0	7
H Lot	113	5	0	118
I Lot	9	3	1	13
J Lot (Art Building)	15	0	1	16
K Lot	86	15	2	103
K Lot, Motorcycle Pad	2	0	0	2
N Lot	192	17	2	211
N Lot, Motorcycle Pad	2	0	0	2
R Lot	121	0	4	125
S Lot	110	34	6	150
Softball Lot	72	0	0	72
T Lot	2	6	1	9
TOTAL	1,936	332	35	2,303

1. Athletic Fields

Baseball Field - Completed Spring 1978

Soccer/Football Field - Completed Spring 1978

Softball Field - Completed Spring 1993

1 acre of land is leased to the City of Alvin for recreational use.

2. Roadways and Jogging Track

Approximately 26,800 feet (5.08 miles) of two-lane roadway (24' width) and a 2-mile, paved jogging track.

D. VALUE OF BUILDINGS AND CONTENTS

**TABLE X-3:
VALUE OF BUILDINGS AND CONTENTS⁵**

BUILDING		STRUCTURE	CONTENTS	TOTAL
Classrooms/Offices	Buildings A, B, C, & D - Megastructure	22,359,980	4,809,463	27,169,443
	Building G – Liberal Arts Center	4,915,680	600,415	5,516,095
	Building H – Natural Science Center	3,043,600	880,470	3,924,070
	Building J – Art Dept Sculpture/Ceramics	605,479	50,700	656,179
	Building K – Court Reporting/KACC	3,030,580	876,704	3,907,284
	Building N – Occupational/Technical	4,737,180	1,004,959	5,742,139
	Building S – Science/Health Science	15,000,000	1,700,000	16,700,000
Other Structures	Building E – Student Center	2,185,000	243,675	2,428,675
	Building F – Gymnasium/Fitness Center	3,383,640	388,516	3,772,156
	Building I – Art Dept Sculpture/Ceramics	131,520	12,577	144,097
	Building M – Shipping/Receiving	733,500	106,624	840,124
	Building T – Transportation/Maintenance	512,465	65,113	577,578
	Building T – Vehicles	358,875	176,175	535,050
	General Storage Building – T	46,800	0	46,800
	KACC Radio Station Storage Building	0	65,123	65,123
	Tower Building/Broadcasting Equipment	170,000	20,000	190,000
	Athletic Concession Stands	135,835	35,000	170,835
	Baseball Field House	1,799,400	161,946	1,961,346
	Building R - Nolan Ryan Center	267,806	495,000	762,806
	Alvin Community College - Pearland Center*	22,359,980	4,809,463	27,169,443
TOTAL ALL STRUCTURES		\$85,777,320	\$16,501,923	\$102,279,243

*Renovation costs only

E. PROJECTS COMPLETED

List of Projects Completed by Physical Plant (2011-2012)

- Removed and replaced chiller one (1) in Environmental
- Removed and replaced ceiling in women's rest room D building
- Hung new lighting in class room B 247
- Remodeled and renovated Building M to facilitate new Physical Plant offices. Included: complete remodel of shipping and receiving office.
- Installed new 20 ton chiller for A buildings IT area
- New air conditioning system installed in D 117
- New condensing coil for the air conditioning at Nolan Ryan Center
- New water heater for dishwasher Nolan Ryan Center
- Renovated court yard area of Building K
- Built a 400 square foot building adjacent to green house
- Removed old plywood off baseball field and replaced with new plywood
- Installed new wall and door in Building J
- Installed new food kiosk in Building S
- Constructed a new vending room in Building S
- Installed new track lighting in Bookstore
- Remodeled the welding shop for CE (Continued education)
- Removed old items out of storage area D 117 and renovated area to house new machinist program for CE (Continued education)
- Rebuilding all generator tanks and making them water proof with new catch basins and roofs.
- Remodeling of new HR conference room located in D building.
- Removed old torn up roof on Pergola located one Building and installed new lattice type roof.
- Installed new water bottle filling station in Building E

CHAPTER XI

FINANCES

A. 2012 BUDGET OVERVIEW⁶

**TABLE XI-1:
BUDGET BY AREA**

AREA	AMOUNT	TOTAL	PERCENT
Instruction		\$12,497,082	49.88%
Technical Programs	5,995,079		
University Parallel Programs	6,218,523		
Pearland College Center	283,480		
General Expense		7,414,737	29.59%
Governance	14,625		
Institutional Administration	237,913		
Financial Affairs/Administrative Services	1,672,709		
General Institutional Expense	1,181,380		
Personnel Benefits	2,728,000		
Development/Marketing	896,758		
Human Resources	175,130		
Institutional Security	341,053		
Institutional Effectiveness & Research	167,169		
Student & Instructional Services		1,883,862	7.52%
Physical Plant Operation & Maintenance		3,260,327	13.01%
TOTAL		\$25,056,008	100.00%

B. LOCAL TAX BASE

TABLE XI-2:

ASSESSED VALUE OF ACC DISTRICT TAX BASE⁶

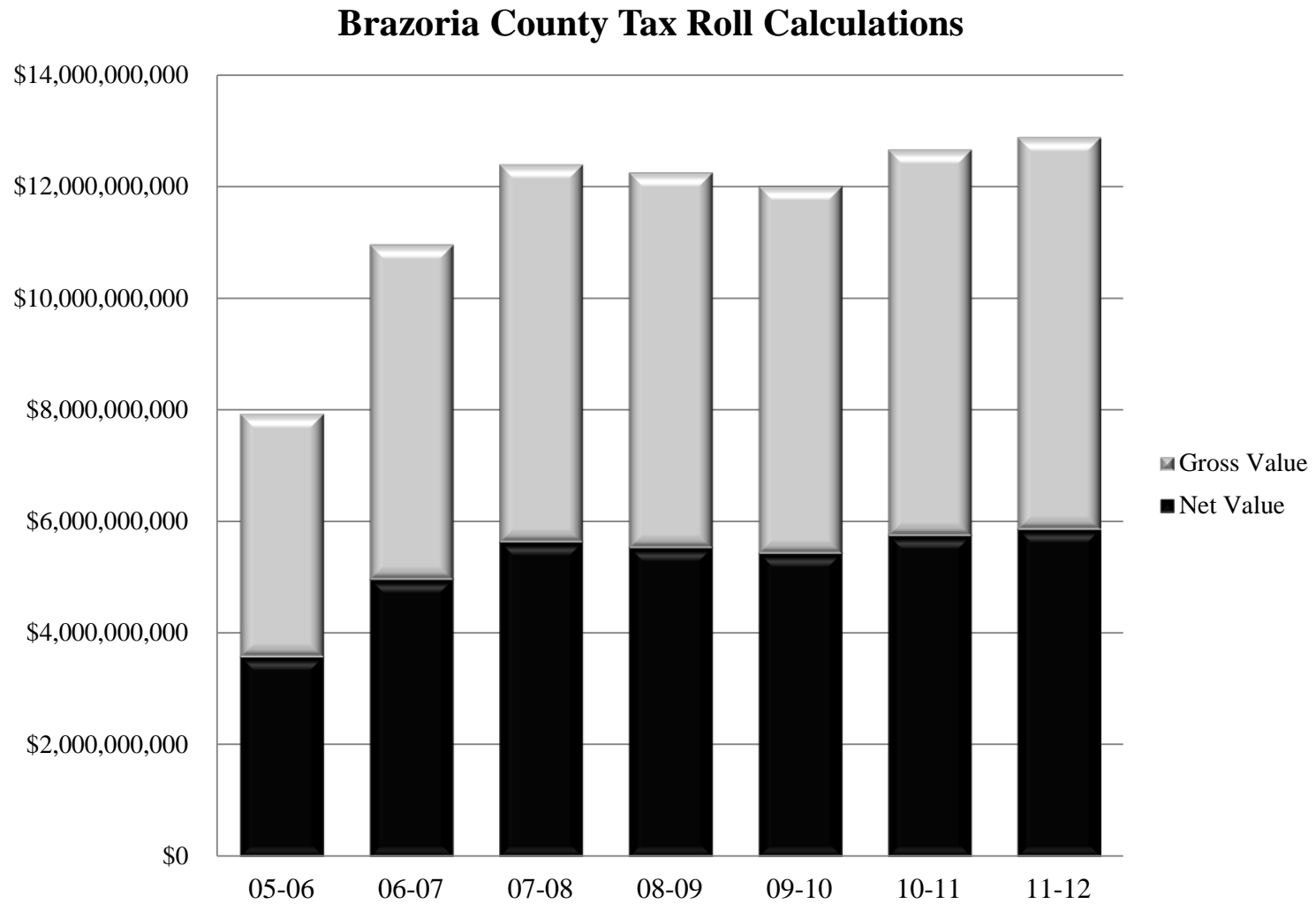
Fiscal Year	<i>(Amounts expressed in thousands)</i>				<i>(Direct Rate)</i>		
	Assessed Valuation of Property	Less: Exemptions	Taxable Assessed Value (TAV)		Maintenance & Operations	Debt Service	Total
1999-00	2,583,734	387,477	2,196,257	85.00%	0.2389	0	0.2389
2000-01	2,801,866	431,256	2,370,610	84.61%	0.2389	0	0.2389
2001-02	3,090,946	493,718	2,597,228	84.03%	0.2411	0	0.2411
2002-03	3,152,192	592,291	2,559,901	81.21%	0.2553	0	0.2553
2003-04	3,281,498	537,287	2,744,211	83.63%	0.254766	0	0.254766
2004-05	3,775,034	627,574	3,147,460	83.38%	0.240561	0	0.240561
2005-06	4,433,472	654,631	3,778,841	85.23%	0.208306	0.029249	0.237555
2006-07	5,164,489	950,970	4,213,519	81.59%	0.193221	0.0263	0.219521
2007-08	6,020,738	1,045,752	4,974,986	82.63%	0.186741	0.023539	0.21028
2008-09	6,728,205	916,132	5,812,073	86.38%	0.177329	0.022503	0.199832
2009-10	6,905,533	1,044,338	5,861,195	84.88%	0.176312	.023518	0.199830
2010-11	6,898,889	1,187,556	5,711,333	82.79%	0.174867	0.024963	0.199830
2011-12	6,657,772	768,841	5,888,930	88.45%	0.173798	0.025687	0.199485

C. BRAZORIA COUNTY TAX OFFICE, TAX ROLL CALCULATIONS FOR ACC⁵

TABLE XI-3:

	2005-06	2006-07	2007-08	2008-09	2009-10	2010-11	2011-12
TAX VALUES							
Land	\$1,102,354,100	\$1,463,191,670	\$1,658,061,014	\$1,716,925,947	\$1,704,022,127	\$1,759,673,975	\$1,743,102,871
Improvements	\$2,724,494,840	\$3,716,245,888	\$4,135,342,477	\$4,078,289,261	\$4,009,566,589	\$4,219,457,970	\$4,284,719,076
Personal	\$428,826,670	\$629,525,460	\$736,073,410	\$675,717,750	\$638,507,820	\$711,332,864	\$744,157,425
Minerals	\$105,044,910	\$178,406,209	\$223,997,357	\$237,937,022	\$214,545,775	\$208,424,567	\$236,792,476
Total Gross Value	\$4,360,720,520	\$5,987,369,227	\$6,753,474,258	\$6,708,869,980	\$6,566,642,311	\$6,898,889,376	\$7,008,771,848
TAX EXEMPTIONS							
Totally Exempt	\$218,184,380	\$300,612,670	\$314,081,568	\$378,022,521	\$379,664,070	\$388,229,230	\$390,008,555
Ag Exemptions	\$257,956,120	\$329,239,451	\$360,164,261	\$379,541,683	\$350,077,427	\$366,701,598	\$346,450,725
Disabled Persons	\$24,712,220	\$32,273,726	\$36,909,326	\$37,562,960	\$36,498,902	\$37,234,193	\$38,902,690
Over 65	\$162,278,130	\$189,726,547	\$210,459,152	\$218,608,357	\$233,941,641	\$243,979,244	\$253,878,337
Disabled Veterans	\$2,033,050	\$3,079,410	\$3,927,890	\$4,280,740	\$17,408,589	\$20,854,307	\$25,163,600
Other	\$106,558,180	\$91,544,202	\$186,896,474	\$149,200,720	\$110,159,935	\$83,081,233	\$81,456,732
Total Exemptions	\$771,722,080	\$1,012,383,486	\$1,112,438,671	\$1,167,216,981	\$1,127,570,564	\$1,140,079,805	\$1,135,860,639
NET VALUE	\$3,588,998,440	\$4,974,985,741	\$5,641,035,587	\$5,541,652,999	\$5,438,891,737	\$5,758,809,571	\$5,872,911,209
TAX LEVY							
Tax Rate	\$0.24	\$0.21	\$0.1998	0.1998	\$0.199830	0.199830	0.199485
Net Value x Rate	\$852,584,524.41	\$10,462,221.64	\$11,272,594.23	\$11,073,996.02	\$10,868,537	\$11,507,829	\$11,715,577
Tax Roll	\$852,584,524.41	\$10,462,221.64	\$11,272,594.23	\$11,073,996.02	\$10,868,537	\$11,507,829	\$11,715,577
Difference	\$ -	\$ -	\$ -	\$ -	\$ -	\$ -	\$ -

**Figure XI-1:
Brazoria County Tax Roll Calculations**



D. REVENUES FROM STATE

**TABLE XI-4:
COMPARISON OF STATE REVENUE TO EXPENDITURES²
(In Thousands)**

Fiscal Year	Education & General Expenditures	State Revenue	State Revenue as a % of Expenditures
1991-92	14,015.9	8,090.7	57.7%
1992-93	15,487.3	9,099.0	58.8%
1993-94	16,325.5	9,674.6	59.3%
1994-95	15,485.4	9,693.6	62.6%
1995-96	15,337.3	9,009.9	58.7%
1996-97	16,186.1	9,029.2	55.8%
1997-98	17,720.7	9,395.8	53.0%
1998-99	16,808.0	9,706.9	57.8%
1999-00	18,158.5	9,510.8	52.4%
2000-01	19,517.7	9,713.8	49.8%
2001-02	20,136.0	10,355.0	51.4%
2002-03	20,378.1	9,898.3	48.6%
2003-04	20,917.3	10,001.5	47.8%
2004-05	22,153.4	10,127.9	45.7%
2005-06	23,600.7	10,341.9	43.8%
2006-07	26,851.2	10,352.7	38.6%
2007-08	28,085.9	10,903.7	38.8%
2008-09	30,516.0	10,995.7	36.0%
2009-10	32,120.6	10,438.0	33.0%
2010-11	31,440.3	10,323.0	32.9%
2011-12	30,207.9	9,128.0	30.2%

Source: Audit Exhibit 2 and SS-2 (Scholarships, Auxiliary, and Depreciation are excluded.)

Note: State Revenue includes Fringe Benefits paid by the State.

E. REVENUES FROM TUITION AND FEES

**TABLE XI-5:
COMPARISON OF TUITION & FEES TO EXPENDITURES²
(In Thousands)**

Fiscal Year	Education & General Expenditures	Tuition/Fees Revenue	Tuition/Fees as a % of Expenditures
1991-92	14,015.9	2,007.4	14.30%
1992-93	15,487.3	2,320.1	15.00%
1993-94	16,325.5	2,141.0	13.10%
1994-95	15,485.4	2,604.4	16.80%
1995-96	15,337.3	2,593.3	16.90%
1996-97	16,186.1	2,715.7	16.80%
1997-98	17,720.7	3,192.7	18.00%
1998-99	16,808.0	3,427.4	20.40%
1999-00	18,158.5	3,721.5	20.50%
2000-01	19,517.1	3,867.6	19.80%
2001-02	20,136.0	3,857.0	19.20%
2002-03	20,378.1	4,823.9	23.70%
2003-04	20,917.3	5,850.6	28.00%
2004-05	22,153.4	5,654.0	25.50%
2005-06	23,600.7	5,782.5	24.50%
2006-07	26,851.2	6,010.2	22.40%
2007-08	28,085.9	7,006.6	24.90%
2008-09	30,516.0	7,802.5	25.57%
2009-10	32,120.6	9,499.6	29.57%
2010-11	31,440.3	10,703.1	34.00%
2011-12	30,207.9	11,270.2	37.31%

Source: Audit Schedule A (All tuition plus fees, except student service fees)

F. GRANTS AND CONTRACTS

**TABLE XI-6:
TOTAL AMOUNT ANTICIPATED⁶**

School Year	Total
1988-89	\$1,165,879
1989-90	\$1,285,201
1990-91	\$1,341,241
1991-92	\$1,155,471
1992-93	\$1,178,640
1993-94	\$1,389,035
1994-95	\$1,750,471
1995-96	\$1,712,346
1996-97	\$1,915,731
1997-98	\$1,679,106
1998-99	\$1,775,384
1999-00	\$1,415,208

School Year	Total
2000-01	\$1,348,158
2001-02	\$1,334,096
2002-03	\$2,079,009
2003-04	\$3,302,590
2004-05	\$3,140,787
2005-06	\$3,130,705
2006-07	\$3,672,692
2007-08	\$3,202,018
2008-09	\$5,965,726
2009-10	\$2,787,709
2010-11	\$3,898,472
2011-12	\$4,709,871

TABLE XI-7:
FEDERAL, STATE, AND PRIVATE GRANTS⁶
(Grants Awarded 2011-12)

GRANT	AMOUNT AWARDED
Community Education	
. Department of Education-Upward Bound	\$242,500
Instructional & Support Services	
. Carl Perkins Grant	\$122,510
. Substance Abuse Counselor Training Grant	\$20,000
. TWCPPC Grant	\$923,301
. TWC Small Business Grant	\$20,000
Student Financial Aid	
. College Work Study (CWSP)	\$57,798
. Pell Grant	\$3,800,000
. Supplemental Educational Opportunity Grant (SEOG)	\$59,333
. Texas Educational Opportunity Grant (TEOG)	\$49,016
. Texas Work Study Program (TWSP)	\$7,382
. Texas Grant	\$117,909
TOTAL	\$5,419,749

SOURCES

- ¹Alvin Community College Administrative Procedures Manual**
- ²Alvin Community College Annual Financial Report**
- ³Alvin Community College Strategic Plan**
- ⁴Alvin Community College Department of Continuing Education**
- ⁵Alvin Community College Financial and Administrative Services**
- ⁶Alvin Community College Fiscal Analysis and Budget**
- ⁷Alvin Community College Foundation**
- ⁸Alvin Community College Office of Human Resources**
- ⁹Alvin Community College Office of Student Services**
- ¹⁰Alvin Community College – Pearland Center**
- ¹¹Alvin Community College Registrar’s Office**
- ¹²Demographics Now (<http://www.demographicsnow.com>) & iXpress**
- ¹³Texas Education Agency (<http://www.tea.state.tx.us>)**
- ¹⁴THECB Educational Data Center (<http://www.thecb.state.tx.us>)**
- ¹⁵THECB Prep (<http://www.txhighereddata.org/Interactive/PREP>)**
- ¹⁶Texas Association of Community Colleges (<http://www.tacc.org>)**

APPENDIX

A. Fall 2012 Quick Reference Guide

Headcount **5,190**

Contact Hours **935,136**

Demographics

➤ **Average Age** **24**

➤ **Gender** **58% Female**
 42% Male

➤ **Race/Ethnicity** **55% White**
 28% Hispanic
 10% Black
 7% Other

B. Texas Community College Tax and Contact Hour Information 2011-12

Sorted By:					
Order	College	Valuation	Tax Rate	FY 2013 Levy*	2011-2012 Contact Hours
1	Alamo	99,742,634,716	0.14915	148,541,205	22,828,048
2	Alvin	6,048,212,091	0.199	12,035,942	2,276,760
3	Amarillo*	14,099,311,257	0.2495	22,196,411	4,556,798
4	Angelina	3,758,259,828	0.17068	6,414,598	2,203,194
5	Austin	117,011,647,602	0.0951	111,278,077	15,817,776
6	Blinn	2,264,399,954	0.0567	1,283,915	7,718,984
7	Brazosport	6,367,649,344	0.259436	16,519,975	1,641,328
8	Central Texas	7,655,741,136	0.14	10,718,038	6,374,296
9	Cisco	533,191,894	0.1079	575,314	1,767,304
10	Clarendon*	2,114,625,934	0.272167	1,398,127	691,488
11	Coastal Bend	1,165,998,330	0.17067	1,990,009	1,665,228
12	College Of The Mainland	9,341,098,849	0.23202	20,976,940	1,695,396
13	Collin	73,591,792,695	0.0863	63,509,717	9,784,072
14	Dallas	164,751,737,568	0.119375	196,672,387	28,609,760
15	Del Mar	17,986,670,894	0.258003	46,406,151	4,873,616
16	El Paso	37,278,985,235	0.114086	42,530,103	11,504,832
17	Frank Phillips*	2,207,487,482	0.251	1,929,287	485,252
18	Galveston	5,188,154,835	0.1894	9,826,365	969,168
19	Grayson	7,173,336,283	0.1818	13,041,125	2,370,028
20	Hill*	9,793,303,371	0.139492	4,660,171	2,180,704
21	Houston	129,149,639,570	0.097173	125,498,579	23,927,720
22	Howard	3,568,329,168	0.176616	6,302,240	1,617,904
23	Kilgore	3,985,200,840	0.154	6,137,209	2,860,520
24	Laredo	10,608,924,028	0.257764	27,345,987	3,585,424
25	Lee	8,596,157,464	0.241	20,716,739	2,743,568
26	Lone Star	121,040,000,000	0.1198	145,005,920	23,363,544
27	Mclennan	12,471,277,910	0.15153	18,897,727	2,704,302
28	Midland*	19,282,949,385	0.17118	23,453,290	3,402,796
29	Navarro	2,774,259,367	0.119	3,301,369	3,620,528
30	North Central Texas*	4,044,731,451	0.1163	2,553,636	4,411,280
31	Northeast Texas	4,338,826,024	0.10	4,338,826	2,758,520
32	Odessa	11,988,311,035	0.18717	22,438,522	1,692,182
33	Panola	4,085,200,390	0.14519	5,931,302	1,569,808
34	Paris	1,545,046,451	0.187	2,889,237	1,916,144
35	Ranger	90,107,560	0.27781	250,328	1,902,783
36	San Jacinto	37,280,070,614	0.185602	69,192,557	10,713,980
37	South Plains	5,079,138,155	0.24795	12,593,723	4,384,136
38	South Texas	29,645,534,071	0.1507	44,675,820	7,379,024
39	Southwest Texas	1,973,625,094	0.13	2,565,713	1,053,330
40	Tarrant	123,803,891,671	0.14897	184,430,657	18,120,312
41	Temple*	4,492,787,501	0.2536	6,836,359	2,594,736
42	Texarkana	1,280,964,397	0.105267	1,348,433	2,240,560
43	Texas Southmost	10,902,983,558	0.162935	17,764,776	2,727,871
44	Trinity Valley*	8,919,086,547	0.139	8,454,172	1,963,568
45	Tyler	9,019,221,818	0.11298	10,189,917	4,184,656
46	Vernon	986,475,610	0.222854	3,198,400	3,423,256
47	Victoria	5,230,505,956	0.1606	8,400,193	1,536,080
48	Weatherford*	16,283,797,771	0.159128	13,542,374	2,081,312
49	Western Texas	3,351,529,048	0.1858	6,227,141	1,635,586
50	Wharton County	3,657,562,724	0.13821	5,055,117	1,861,776

*Indicates a Maintenance Tax District. In the case of a tax rate range in these areas the average was used.

		Sorted By:			
Order	College	Valuation	Tax Rate	FY 2013 Levy*	2011-2012 Contact Hours
1	Dallas	164,751,737,568	0.119375	196,672,387	28,609,760
2	Houston	129,149,639,570	0.097173	125,498,579	23,927,720
3	Tarrant	123,803,891,671	0.14897	184,430,657	18,120,312
4	Lone Star	121,040,000,000	0.1198	145,005,920	23,363,544
5	Austin	117,011,647,602	0.0951	111,278,077	15,817,776
6	Alamo	99,742,634,716	0.14915	148,541,205	22,828,048
7	Collin	73,591,792,695	0.0863	63,509,717	9,784,072
8	San Jacinto	37,280,070,614	0.185602	69,192,557	10,713,980
9	El Paso	37,278,985,235	0.114086	42,530,103	11,504,832
10	South Texas	29,645,534,071	0.1507	44,675,820	7,379,024
11	Midland*	19,282,949,385	0.17118	23,453,290	3,402,796
12	Del Mar	17,986,670,894	0.258003	46,406,151	4,873,616
13	Weatherford*	16,283,797,771	0.159128	13,542,374	2,081,312
14	Amarillo*	14,099,311,257	0.2495	22,196,411	4,556,798
15	Mclennan	12,471,277,910	0.15153	18,897,727	2,704,302
16	Odessa	11,988,311,035	0.18717	22,438,522	1,692,182
17	Texas Southmost	10,902,983,558	0.162935	17,764,776	2,727,871
18	Laredo	10,608,924,028	0.257764	27,345,987	3,585,424
19	Hill*	9,793,303,371	0.139492	4,660,171	2,180,704
20	College Of The Mainland	9,341,098,849	0.23202	20,976,940	1,695,396
21	Tyler	9,019,221,818	0.11298	10,189,917	4,184,656
22	Trinity Valley*	8,919,086,547	0.139	8,454,172	1,963,568
23	Lee	8,596,157,464	0.241	20,716,739	2,743,568
24	Central Texas	7,655,741,136	0.14	10,718,038	6,374,296
25	Grayson	7,173,336,283	0.1818	13,041,125	2,370,028
26	Brazosport	6,367,649,344	0.259436	16,519,975	1,641,328
27	Alvin	6,048,212,091	0.199	12,035,942	2,276,760
28	Victoria	5,230,505,956	0.1606	8,400,193	1,536,080
29	Galveston	5,188,154,835	0.1894	9,826,365	969,168
30	South Plains	5,079,138,155	0.24795	12,593,723	4,384,136
31	Temple*	4,492,787,501	0.2536	6,836,359	2,594,736
32	Northeast Texas	4,338,826,024	0.1	4,338,826	2,758,520
33	Panola	4,085,200,390	0.14519	5,931,302	1,569,808
34	North Central Texas*	4,044,731,451	0.1163	2,553,636	4,411,280
35	Kilgore	3,985,200,840	0.154	6,137,209	2,860,520
36	Angelina	3,758,259,828	0.17068	6,414,598	2,203,194
37	Wharton County	3,657,562,724	0.13821	5,055,117	1,861,776
38	Howard	3,568,329,168	0.176616	6,302,240	1,617,904
39	Western Texas	3,351,529,048	0.1858	6,227,141	1,635,586
40	Navarro	2,774,259,367	0.119	3,301,369	3,620,528
41	Blinn	2,264,399,954	0.0567	1,283,915	7,718,984
42	Frank Phillips*	2,207,487,482	0.251	1,929,287	485,252
43	Clarendon*	2,114,625,934	0.272167	1,398,127	691,488
44	Southwest Texas	1,973,625,094	0.13	2,565,713	1,053,330
45	Paris	1,545,046,451	0.187	2,889,237	1,916,144
46	Texarkana	1,280,964,397	0.105267	1,348,433	2,240,560
47	Coastal Bend	1,165,998,330	0.17067	1,990,009	1,665,228
48	Vernon	986,475,610	0.222854	3,198,400	3,423,256
49	Cisco	533,191,894	0.1079	575,314	1,767,304
50	Ranger	90,107,560	0.27781	250,328	1,902,783

*Indicates a Maintenance Tax District. In the case of a tax rate range in these areas the average was used.

			Sorted By:		
Order	College	Valuation	Tax Rate	FY 2013 Levy*	2011-2012 Contact Hours
1	Ranger	90,107,560	0.27781	250,328	1,902,783
2	Clarendon*	2,114,625,934	0.272167	1,398,127	691,488
3	Brazosport	6,367,649,344	0.259436	16,519,975	1,641,328
4	Del Mar	17,986,670,894	0.258003	46,406,151	4,873,616
5	Laredo	10,608,924,028	0.257764	27,345,987	3,585,424
6	Temple*	4,492,787,501	0.2536	6,836,359	2,594,736
7	Frank Phillips*	2,207,487,482	0.251	1,929,287	485,252
8	Amarillo*	14,099,311,257	0.2495	22,196,411	4,556,798
9	South Plains	5,079,138,155	0.24795	12,593,723	4,384,136
10	Lee	8,596,157,464	0.241	20,716,739	2,743,568
11	College Of The Mainland	9,341,098,849	0.23202	20,976,940	1,695,396
12	Vernon	986,475,610	0.222854	3,198,400	3,423,256
13	Alvin	6,048,212,091	0.199	12,035,942	2,276,760
14	Galveston	5,188,154,835	0.1894	9,826,365	969,168
15	Odessa	11,988,311,035	0.18717	22,438,522	1,692,182
16	Paris	1,545,046,451	0.187	2,889,237	1,916,144
17	Western Texas	3,351,529,048	0.1858	6,227,141	1,635,586
18	San Jacinto	37,280,070,614	0.185602	69,192,557	10,713,980
19	Grayson	7,173,336,283	0.1818	13,041,125	2,370,028
20	Howard	3,568,329,168	0.176616	6,302,240	1,617,904
21	Midland*	19,282,949,385	0.17118	23,453,290	3,402,796
22	Angelina	3,758,259,828	0.17068	6,414,598	2,203,194
23	Coastal Bend	1,165,998,330	0.17067	1,990,009	1,665,228
24	Texas Southmost	10,902,983,558	0.162935	17,764,776	2,727,871
25	Victoria	5,230,505,956	0.1606	8,400,193	1,536,080
26	Weatherford*	16,283,797,771	0.159128	13,542,374	2,081,312
27	Kilgore	3,985,200,840	0.154	6,137,209	2,860,520
28	McLennan	12,471,277,910	0.15153	18,897,727	2,704,302
29	South Texas	29,645,534,071	0.1507	44,675,820	7,379,024
30	Alamo	99,742,634,716	0.14915	148,541,205	22,828,048
31	Tarrant	123,803,891,671	0.14897	184,430,657	18,120,312
32	Panola	4,085,200,390	0.14519	5,931,302	1,569,808
33	Central Texas	7,655,741,136	0.14	10,718,038	6,374,296
34	Hill*	9,793,303,371	0.139492	4,660,171	2,180,704
35	Trinity Valley*	8,919,086,547	0.139	8,454,172	1,963,568
36	Wharton County	3,657,562,724	0.13821	5,055,117	1,861,776
37	Southwest Texas	1,973,625,094	0.13	2,565,713	1,053,330
38	Lone Star	121,040,000,000	0.1198	145,005,920	23,363,544
39	Dallas	164,751,737,568	0.119375	196,672,387	28,609,760
40	Navarro	2,774,259,367	0.119	3,301,369	3,620,528
41	North Central Texas*	4,044,731,451	0.1163	2,553,636	4,411,280
42	El Paso	37,278,985,235	0.114086	42,530,103	11,504,832
43	Tyler	9,019,221,818	0.11298	10,189,917	4,184,656
44	Cisco	533,191,894	0.1079	575,314	1,767,304
45	Texarkana	1,280,964,397	0.105267	1,348,433	2,240,560
46	Northeast Texas	4,338,826,024	0.1	4,338,826	2,758,520
47	Houston	129,149,639,570	0.097173	125,498,579	23,927,720
48	Austin	117,011,647,602	0.0951	111,278,077	15,817,776
49	Collin	73,591,792,695	0.0863	63,509,717	9,784,072
50	Blinn	2,264,399,954	0.0567	1,283,915	7,718,984

*Indicates a Maintenance Tax District. In the case of a tax rate range in these areas the average was used.

				Sorted By:	
Order	College	Valuation	Tax Rate	FY 2013 Levy*	2011-2012 Contact Hours
1	Dallas	164,751,737,568	0.119375	196,672,387	28,609,760
2	Tarrant	123,803,891,671	0.14897	184,430,657	18,120,312
3	Alamo	99,742,634,716	0.14915	148,541,205	22,828,048
4	Lone Star	121,040,000,000	0.1198	145,005,920	23,363,544
5	Houston	129,149,639,570	0.097173	125,498,579	23,927,720
6	Austin	117,011,647,602	0.0951	111,278,077	15,817,776
7	San Jacinto	37,280,070,614	0.185602	69,192,557	10,713,980
8	Collin	73,591,792,695	0.0863	63,509,717	9,784,072
9	Del Mar	17,986,670,894	0.258003	46,406,151	4,873,616
10	South Texas	29,645,534,071	0.1507	44,675,820	7,379,024
11	El Paso	37,278,985,235	0.114086	42,530,103	11,504,832
12	Laredo	10,608,924,028	0.257764	27,345,987	3,585,424
13	Midland*	19,282,949,385	0.17118	23,453,290	3,402,796
14	Odessa	11,988,311,035	0.18717	22,438,522	1,692,182
15	Amarillo*	14,099,311,257	0.2495	22,196,411	4,556,798
16	College Of The Mainland	9,341,098,849	0.23202	20,976,940	1,695,396
17	Lee	8,596,157,464	0.241	20,716,739	2,743,568
18	McLennan	12,471,277,910	0.15153	18,897,727	2,704,302
19	Texas Southmost	10,902,983,558	0.162935	17,764,776	2,727,871
20	Brazosport	6,367,649,344	0.259436	16,519,975	1,641,328
21	Weatherford*	16,283,797,771	0.159128	13,542,374	2,081,312
22	Grayson	7,173,336,283	0.1818	13,041,125	2,370,028
23	South Plains	5,079,138,155	0.24795	12,593,723	4,384,136
24	Alvin	6,048,212,091	0.199	12,035,942	2,276,760
25	Central Texas	7,655,741,136	0.14	10,718,038	6,374,296
26	Tyler	9,019,221,818	0.11298	10,189,917	4,184,656
27	Galveston	5,188,154,835	0.1894	9,826,365	969,168
28	Trinity Valley*	8,919,086,547	0.139	8,454,172	1,963,568
29	Victoria	5,230,505,956	0.1606	8,400,193	1,536,080
30	Temple*	4,492,787,501	0.2536	6,836,359	2,594,736
31	Angelina	3,758,259,828	0.17068	6,414,598	2,203,194
32	Howard	3,568,329,168	0.176616	6,302,240	1,617,904
33	Western Texas	3,351,529,048	0.1858	6,227,141	1,635,586
34	Kilgore	3,985,200,840	0.154	6,137,209	2,860,520
35	Panola	4,085,200,390	0.14519	5,931,302	1,569,808
36	Wharton County	3,657,562,724	0.13821	5,055,117	1,861,776
37	Hill*	9,793,303,371	0.139492	4,660,171	2,180,704
38	Northeast Texas	4,338,826,024	0.1	4,338,826	2,758,520
39	Navarro	2,774,259,367	0.119	3,301,369	3,620,528
40	Vernon	986,475,610	0.222854	3,198,400	3,423,256
41	Paris	1,545,046,451	0.187	2,889,237	1,916,144
42	Southwest Texas	1,973,625,094	0.13	2,565,713	1,053,330
43	North Central Texas*	4,044,731,451	0.1163	2,553,636	4,411,280
44	Coastal Bend	1,165,998,330	0.17067	1,990,009	1,665,228
45	Frank Phillips*	2,207,487,482	0.251	1,929,287	485,252
46	Clarendon*	2,114,625,934	0.272167	1,398,127	691,488
47	Texarkana	1,280,964,397	0.105267	1,348,433	2,240,560
48	Blinn	2,264,399,954	0.0567	1,283,915	7,718,984
49	Cisco	533,191,894	0.1079	575,314	1,767,304
50	Ranger	90,107,560	0.27781	250,328	1,902,783

*Indicates a Maintenance Tax District. In the case of a tax rate range in these areas the average was used.

					Sorted By:
Order	College	Valuation	Tax Rate	FY 2013 Levy*	2011-2012 Contact Hours
1	Dallas	164,751,737,568	0.119375	196,672,387	28,609,760
2	Houston	129,149,639,570	0.097173	125,498,579	23,927,720
3	Lone Star	121,040,000,000	0.1198	145,005,920	23,363,544
4	Alamo	99,742,634,716	0.14915	148,541,205	22,828,048
5	Tarrant	123,803,891,671	0.14897	184,430,657	18,120,312
6	Austin	117,011,647,602	0.0951	111,278,077	15,817,776
7	El Paso	37,278,985,235	0.114086	42,530,103	11,504,832
8	San Jacinto	37,280,070,614	0.185602	69,192,557	10,713,980
9	Collin	73,591,792,695	0.0863	63,509,717	9,784,072
10	Blinn	2,264,399,954	0.0567	1,283,915	7,718,984
11	South Texas	29,645,534,071	0.1507	44,675,820	7,379,024
12	Central Texas	7,655,741,136	0.14	10,718,038	6,374,296
13	Del Mar	17,986,670,894	0.258003	46,406,151	4,873,616
14	Amarillo*	14,099,311,257	0.2495	22,196,411	4,556,798
15	North Central Texas*	4,044,731,451	0.1163	2,553,636	4,411,280
16	South Plains	5,079,138,155	0.24795	12,593,723	4,384,136
17	Tyler	9,019,221,818	0.11298	10,189,917	4,184,656
18	Navarro	2,774,259,367	0.119	3,301,369	3,620,528
19	Laredo	10,608,924,028	0.257764	27,345,987	3,585,424
20	Vernon	986,475,610	0.222854	3,198,400	3,423,256
21	Midland*	19,282,949,385	0.17118	23,453,290	3,402,796
22	Kilgore	3,985,200,840	0.154	6,137,209	2,860,520
23	Northeast Texas	4,338,826,024	0.1	4,338,826	2,758,520
24	Lee	8,596,157,464	0.241	20,716,739	2,743,568
25	Texas Southmost	10,902,983,558	0.162935	17,764,776	2,727,871
26	McLennan	12,471,277,910	0.15153	18,897,727	2,704,302
27	Temple*	4,492,787,501	0.2536	6,836,359	2,594,736
28	Grayson	7,173,336,283	0.1818	13,041,125	2,370,028
29	Alvin	6,048,212,091	0.199	12,035,942	2,276,760
30	Texarkana	1,280,964,397	0.105267	1,348,433	2,240,560
31	Angelina	3,758,259,828	0.17068	6,414,598	2,203,194
32	Hill*	9,793,303,371	0.139492	4,660,171	2,180,704
33	Weatherford*	16,283,797,771	0.159128	13,542,374	2,081,312
34	Trinity Valley*	8,919,086,547	0.139	8,454,172	1,963,568
35	Paris	1,545,046,451	0.187	2,889,237	1,916,144
36	Ranger	90,107,560	0.27781	250,328	1,902,783
37	Wharton County	3,657,562,724	0.13821	5,055,117	1,861,776
38	Cisco	533,191,894	0.1079	575,314	1,767,304
39	College Of The Mainland	9,341,098,849	0.23202	20,976,940	1,695,396
40	Odessa	11,988,311,035	0.18717	22,438,522	1,692,182
41	Coastal Bend	1,165,998,330	0.17067	1,990,009	1,665,228
42	Brazosport	6,367,649,344	0.259436	16,519,975	1,641,328
43	Western Texas	3,351,529,048	0.1858	6,227,141	1,635,586
44	Howard	3,568,329,168	0.176616	6,302,240	1,617,904
45	Panola	4,085,200,390	0.14519	5,931,302	1,569,808
46	Victoria	5,230,505,956	0.1606	8,400,193	1,536,080
47	Southwest Texas	1,973,625,094	0.13	2,565,713	1,053,330
48	Galveston	5,188,154,835	0.1894	9,826,365	969,168
49	Clarendon*	2,114,625,934	0.272167	1,398,127	691,488
50	Frank Phillips*	2,207,487,482	0.251	1,929,287	485,252

*Indicates a Maintenance Tax District. In the case of a tax rate range in these areas the average was used.

						Sorted By:
Order	College	Valuation	Tax Rate	FY 2013 Levy*	2011-2012 Contact Hours	Taxes Levied Per Contact Hour (Levy/Contact hour)
1	Odessa	11,988,311,035	0.18717	22,438,522	1,692,182	13.26
2	College of The Mainland	9,341,098,849	0.23202	20,976,940	1,695,396	12.37
3	Tarrant	123,803,891,671	0.14897	184,430,657	18,120,312	10.18
4	Galveston	5,188,154,835	0.1894	9,826,365	969,168	10.14
5	Brazosport	6,367,649,344	0.259436	16,519,975	1,641,328	10.07
6	Del Mar	17,986,670,894	0.258003	46,406,151	4,873,616	9.52
7	Laredo	10,608,924,028	0.257764	27,345,987	3,585,424	7.63
8	Lee	8,596,157,464	0.241	20,716,739	2,743,568	7.55
9	Austin	117,011,647,602	0.0951	111,278,077	15,817,776	7.04
10	McLennan	12,471,277,910	0.15153	18,897,727	2,704,302	6.99
11	Midland*	19,282,949,385	0.17118	23,453,290	3,402,796	6.89
12	Dallas	164,751,737,568	0.119375	196,672,387	28,609,760	6.87
13	Alamo	99,742,634,716	0.14915	148,541,205	22,828,048	6.51
14	Texas Southmost	10,902,983,558	0.162935	17,764,776	2,727,871	6.51
15	Weatherford*	16,283,797,771	0.159128	13,542,374	2,081,312	6.51
16	Collin	73,591,792,695	0.0863	63,509,717	9,784,072	6.49
17	San Jacinto	37,280,070,614	0.185602	69,192,557	10,713,980	6.46
18	Lone Star	121,040,000,000	0.1198	145,005,920	23,363,544	6.21
19	South Texas	29,645,534,071	0.1507	44,675,820	7,379,024	6.05
20	Grayson	7,173,336,283	0.1818	13,041,125	2,370,028	5.50
21	Victoria	5,230,505,956	0.1606	8,400,193	1,536,080	5.47
22	Alvin	6,048,212,091	0.199	12,035,942	2,276,760	5.29
23	Houston	129,149,639,570	0.097173	125,498,579	23,927,720	5.24
24	Amarillo*	14,099,311,257	0.2495	22,196,411	4,556,798	4.87
25	Trinity Valley*	8,919,086,547	0.139	8,454,172	1,963,568	4.31
26	Frank Phillips*	2,207,487,482	0.251	1,929,287	485,252	3.98
27	Howard	3,568,329,168	0.176616	6,302,240	1,617,904	3.90
28	Western Texas	3,351,529,048	0.1858	6,227,141	1,635,586	3.81
29	Panola	4,085,200,390	0.14519	5,931,302	1,569,808	3.78
30	El Paso	37,278,985,235	0.114086	42,530,103	11,504,832	3.70
31	Angelina	3,758,259,828	0.17068	6,414,598	2,203,194	2.91
32	South Plains	5,079,138,155	0.24795	12,593,723	4,384,136	2.87
33	Wharton County	3,657,562,724	0.13821	5,055,117	1,861,776	2.72
34	Temple*	4,492,787,501	0.2536	6,836,359	2,594,736	2.63
35	Tyler	9,019,221,818	0.11298	10,189,917	4,184,656	2.44
36	Southwest Texas	1,973,625,094	0.13	2,565,713	1,053,330	2.44
37	Kilgore	3,985,200,840	0.154	6,137,209	2,860,520	2.15
38	Hill*	9,793,303,371	0.139492	4,660,171	2,180,704	2.14
39	Clarendon*	2,114,625,934	0.272167	1,398,127	691,488	2.02
40	Central Texas	7,655,741,136	0.14	10,718,038	6,374,296	1.68
41	Northeast Texas	4,338,826,024	0.1	4,338,826	2,758,520	1.57
42	Paris	1,545,046,451	0.187	2,889,237	1,916,144	1.51
43	Coastal Bend	1,165,998,330	0.17067	1,990,009	1,665,228	1.20
44	Vernon	986,475,610	0.222854	3,198,400	3,423,256	0.93
45	Navarro	2,774,259,367	0.119	3,301,369	3,620,528	0.91
46	Texarkana	1,280,964,397	0.105267	1,348,433	2,240,560	0.60
47	North Central Texas*	4,044,731,451	0.1163	2,553,636	4,411,280	0.58
48	Cisco	533,191,894	0.1079	575,314	1,767,304	0.33
49	Blinn	2,264,399,954	0.0567	1,283,915	7,718,984	0.17
50	Ranger	90,107,560	0.27781	250,328	1,902,783	0.13

*Indicates a Maintenance Tax District. In the case of a tax rate range in these areas the average was used.