

FACT BOOK

Data from 2013-2014

Print date June 2015

**Office of Institutional Effectiveness and Research
Alvin Community College
3110 Mustang Road
Alvin, TX 77511**

CONTENTS

CONTENTS	i
PREFACE	iii
CHAPTER I GENERAL INFORMATION	1
A. Map of Alvin Community College District and Service Area.....	2
B. Institutional Profile of Alvin Community College	3
C. Mission, Vision, and Goals	5
D. History.....	7
CHAPTER II ORGANIZATION AND GOVERNANCE	9
A. Board of Regents.....	10
B. Chief Administrator of the College.....	11
C. Standing Committees	11
D. Organizational Structure	12
CHAPTER III ALVIN COMMUNITY COLLEGE FOUNDATION	21
A. Alvin Community College Foundation, Inc.....	22
CHAPTER IV THE COLLEGE DISTRICT AND ADJOINING AREAS	23
A. General Description	24
B. The City of Alvin	24
C. Alvin Community College District and Service Area Demographics	25
CHAPTER V STUDENTS IN CREDIT PROGRAMS	28
A. Enrollment Data	29
B. Student Characteristics.....	35
C. Enrollment Projections.....	39
D. Texas Department of Criminal Justice (TDCJ)	40
E. Technical Programs	41
F. Academic Programs	43
G. Degrees and Certificates Eearned	45
CHAPTER VI CONTINUING EDUCATION PROGRAMS	46
A. Continuing Education Executive Summary.....	47
B. Continuing Education Program Enrollment Data	48
C. Workforce Training Programs	49
D. Other Continuing Education Programs	50
E. All Continuing Education Programs Combined	51
F. Center for Professional and Workforce Development.....	52

CHAPTER VII STUDENT SERVICES	54
A. Office of Admissions and Academic Advising	55
B. Financial Assistance.....	58
C. Student Records	59
D. Library.....	59
E. Upward Bound.....	60
F. Office of Student Activities	61
CHAPTER VIII ALVIN COMMUNITY COLLEGE - PEARLAND CENTER	61
A. Introduction and History	63
B. Alvin Community College – Pearland Center Site Map.....	65
C. Alvin Community College – Pearland Center Campus Buildings.....	66
D. Pearland Center Enrollment History	67
CHAPTER IX PERSONNEL	73
A. EEO Policy Statement.....	74
B. Demographics of Faculty and Staff, 2013-2014.....	74
CHAPTER X FACILITIES AND PHYSICAL PLANT	77
A. Alvin Community College Campus Map	78
B. Alvin Community College Campus Buildings	79
C. Parking Lots and Playing Fields	80
D. Value of Buildings and Contents	81
E. Projects Completed	82
CHAPTER XI FINANCES	83
A. 2013 Budget Overview	84
B. Local Tax Base	85
C. Brazoria County Tax Office Tax Roll Calculations for ACC.....	86
D. Revenues from State	88
E. Revenues from Tuition and Fees	89
F. Grants and Contracts.....	90
SOURCES.....	92
APPENDIX.....	93
A. Fall 2013 Quick Reference Guide.....	94
B. Texas Community College Tax and Contact Hour Information 2013-2014	95

PREFACE

The purpose of the *Alvin Community College Fact Book* is to place into a single document all the pertinent facts concerning the College's operations. It provides the reader with a convenient and authoritative source of information about the historical development and present focus of the College.

The organization of the material was designed to present a brief, yet comprehensive, report of the various facets of Alvin Community College. Chapters I and II depict the institutional profile and organizational structure of the College. Chapters III and IV reflect the surrounding community, environment, influences, and support. Chapters V through VII provide descriptive data about the student population and student services. Chapter VIII provides specific data about Alvin Community College - Pearland Center and its student population. Chapters IX, X, and XI concentrate on personnel demographics, physical facilities, and financial information.

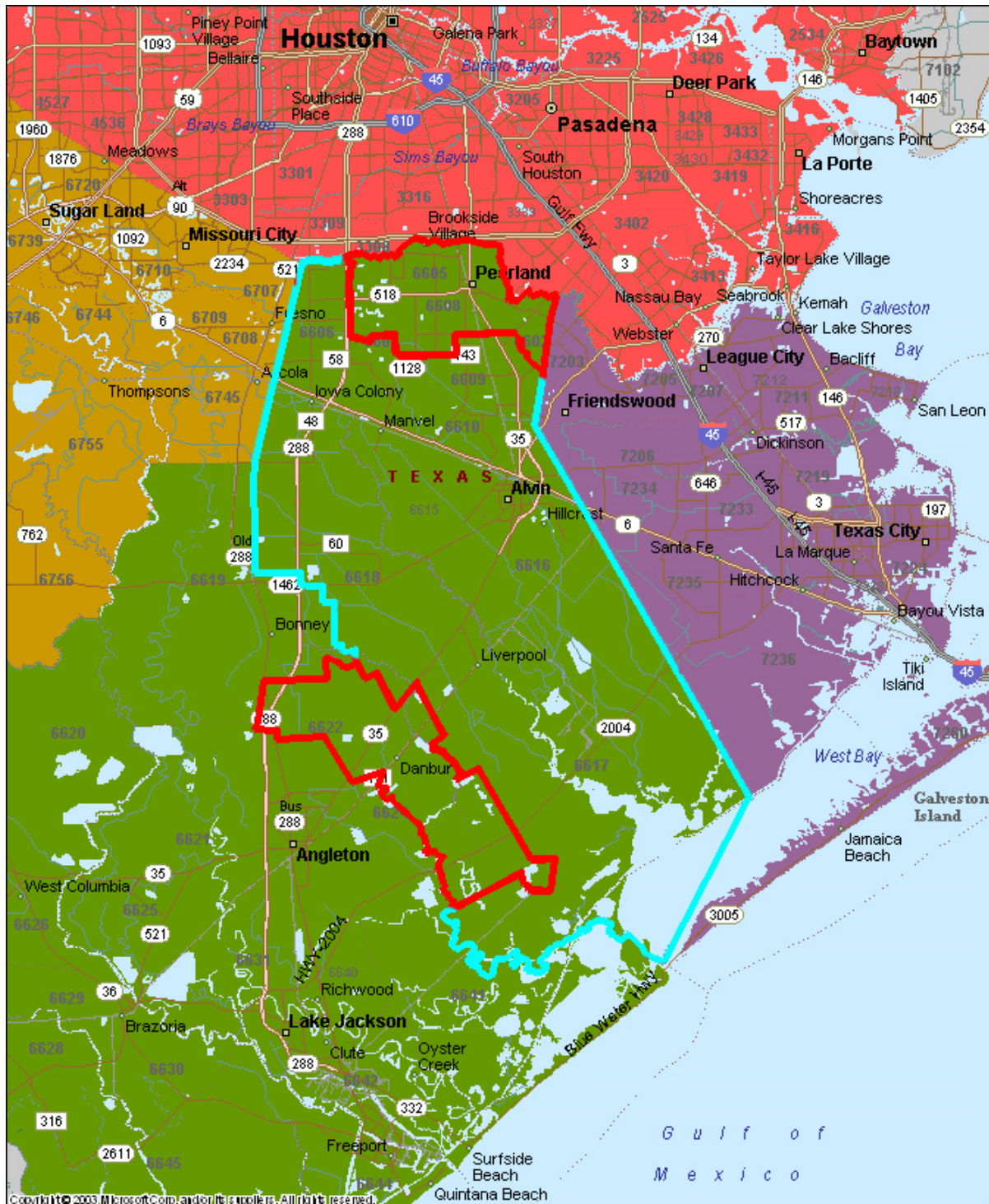
The *Fact Book* is developed by the Office of Institutional Effectiveness and Research and is updated annually. The 2015 document represents the thirty-first edition.

Dr. Christal Albrecht
President

CHAPTER I

GENERAL INFORMATION

A. MAP OF ALVIN COMMUNITY COLLEGE DISTRICT AND SERVICE AREA¹³



Each county is a different color.

The District is denoted by a blue line and the service area is denoted by a red line.

B. INSTITUTIONAL PROFILE OF ALVIN COMMUNITY COLLEGE

Type: Public Comprehensive Community College

Headcount¹¹: Academic and Technical

Fall 2013	5,191*
Fall 2013 (<i>with flexible entry</i>)	5,191
Spring 2014	4,674*
Spring 2014 (<i>with flexible entry</i>)	5,370
Summer 2014	2,633*
Summer 2014 (<i>with flexible entry</i>)	3,264

Headcount⁴: Continuing Education

2013-2014	1,522*
------------------	--------

**Unduplicated headcounts exclude flexible entry.*

Faculty⁸:	Fall 2012	108 Full-time Academic and Technical Faculty
	Fall 2013	111 Full-time Academic and Technical Faculty
	Fall 2014	110 Full-time Academic and Technical Faculty

Finances⁶:	2012-2013	Operating Budget = \$25,056,008
	2013-2014	Operating Budget = \$25,899,697
	2014-2015	Operating Budget = \$27,376,798

Funding²:

Based on the 2013-2014 Annual Financial Report, funding for Alvin Community College comes from the state government (**22%**), federal government (**16%**), tuition and fees (**25%**), local taxes and miscellaneous income (**36%**), and investment income and other (**1%**).

Degrees Granted:

- Associate of Arts
- Associate of Science
- Associate of Applied Science

Certificates Granted:

- Certificate One – Less than one-year Programs
- Certificate Two – One-year Programs
- Certificate Three – Enhanced Skills Program

Divisions:

- Academic Programs
- Technical Programs
- Continuing Education

Recognition (Approved and Accredited by):

- Southern Association of Colleges and Schools Commission on Colleges
- Accreditation Commission for Education in Nursing, Inc.
- Accreditation for Education in Neurodiagnostic Technology
- Committee on Accreditation for Respiratory Care
- Committee on Accreditation for Polysomnographic Technologists Education
- National League of Nurses
- National Shorthand Reporters Association
- State and National Commission on Accreditation for Allied Health Education Programs
- Texas Board of Nursing
- Texas Commission on Law Enforcement Education and Standards
- Texas Education Agency
- Texas Higher Education Coordinating Board

C. MISSION, VISION, AND GOALS³

Mission Statement:

The mission of Alvin Community College is to improve lives by providing affordable, accessible and innovative educational opportunities to those it serves.

Vision Statement:

Alvin Community College will be recognized as a premier community college in the state of Texas.

Strategic Goals:

1. Student Success

Alvin Community College will provide access to high quality educational opportunities to its students in an environment that encourage success.

1.1 Enrollment – Increase enrollment over a four year period.

1.2 Completion – Increase the number of students that fall into the target completion areas.

1.3 Completer Success – Increase or maintain the number of students succeeding in the target areas.

1.4 Instructional Practices – Alvin Community College will exceed its peer institutions on the Community College Survey of Student Engagement (CCSSE) questions identified as addressing best instructional practices.

2. Partnerships & Resource Development

Alvin Community College will carry out its mission efficiently, and will engage in partnerships that bring resources to the college and community.

2.1 Articulations – Increase the number of students who participate or request Technical articulated credit; increase the number of students who participate or request Dual Credit; maintain or increase the number of institutional Higher Education articulations.

2.2 Grants/Private/Public Partnerships – Increase Alvin Community College's involvement in area economic development by working closely with all local economic development entities, both city and county.

3. Professional Development

Alvin Community College will promote lifelong learning for its employees that improves their effectiveness in serving students and the community.

3.1 Tracking System – Establish a tracking system to monitor and evaluate full-time faculty and staff participation in professional development activities.

3.2 Training Program – Offer an accessible training program for all employees to support the goals of the college.

4. Cultural Awareness

Alvin Community College will have an educational environment that reflects a changing world and prepares its students to live and work in diverse situations.

4.1 Student Population – The College will have a student population that reflects the community's diversity.

4.2 Cultural Activities – Participation will increase in cultural activities and events offered by the college.

5. Campus Safety

Alvin Community College will ensure the safety of its campus for students, employees and the community.

5.1 Crime Rate - Alvin Community College will maintain a crime rate at or below state and local college averages.

5.2 Safety Training - Alvin Community College will ensure that all Campus Police officers are adequately trained to meet emergency responses.

5.3 Facility Safety - Alvin Community College will ensure that all building, structure, lighting, and grounds will be regularly inspected for unsafe conditions.

(Strategic Plan 2011-15: revised 2/12)

Purpose Statement:

In addition to the goals described above, Alvin Community College subscribes to the purpose of the public community college as outlined in Section 130.003 of the Texas Education Code. The purpose of each public community college shall be to provide:

1. Technical programs up to two years in length leading to associate degrees or certificates;
2. Vocational programs leading directly to employment in semi-skilled and skilled occupations;
3. Freshman and sophomore courses in arts and sciences;
4. Continuing adult education programs for occupational or cultural upgrading;
5. Compensatory education programs designed to fulfill the commitment of an admissions policy allowing enrollment of disadvantaged students;
6. A continuing program of counseling and guidance designed to assist students in achieving their individual educational goals;

7. Workforce development programs designed to meet local and statewide needs;
8. Adult literacy and other basic skills programs for adults; and
9. Such other purposes as may be prescribed by the Texas Higher Education Coordinating Board or local governing boards in the best interest of post-secondary education in Texas.

D. HISTORY⁵

The Alvin Community College District was approved by the qualified voters of the Alvin Independent School District on November 2, 1948. From its inception, until the 1971-72 academic year, the College was administered by officials of the Alvin Independent School District. The 1971-72 academic year marked the beginning of a new era in the history of Alvin Community College. A separate administration, tax district, and College Board were established to assume the management, control, and operation of a newly created Alvin Junior College District.

Initially, when the College and public schools were in the same system, the College was part of Alvin High School. The first classes began on September 12, 1949, in facilities which grouped grades 11 through 14 in one building and which placed Alvin under a system known as the 6-4-4 plan. One of the more important changes in the program of Alvin Community College was the building of a separate physical plant for academic work at the college level and dropping the 6-4-4 plan in favor of a 6-3-3-2 arrangement. The college program was strengthened by additional facilities, by an enlarged faculty, and by successfully meeting the standards of the Southern Association of Colleges and Secondary Schools (1959). Alvin Community College moved to its present campus for the summer session of 1963.

By a vote of both the original district and voters of adjoining territories, the college district was enlarged to nearly twice its geographical size in 1974. Then in the spring of 1975, an \$8 million bond issue was approved, providing funds for the facilities necessary to meet an expanding enrollment. In 1998 the College expanded into its service area with the establishment of the Alvin Community College - Pearland Center in the former C.J. Harris Elementary School in Pearland. In May 2005, a \$19,998,480 bond issue was approved to build a 98,790 square foot building for Science and Health Science programs. The building opened for fall classes in August 2007. On February 28, 2008, the Board of Regents voted to accept the construction bid from Barnier Building Systems in order to build a new Art Instruction Building. The bid was for \$605,479.00, which would provide approximately 4,800 square feet of instructional space. The construction of the building was completed in August of 2008, in time to utilize the facility for the 2008 fall semester.

The enrollment of Alvin Community College has grown from 134 students in 1949 to a record high of 5,736 (unduplicated headcount includes flexible entry) for the Fall 2010 state reporting period. During the period of growth, Alvin Community College has had five presidents with the sixth president beginning summer of 2014:

<i>Mr. A.G. Welch</i>	<i>1949-54</i>
<i>Dr. A.B. Templeton</i>	<i>1954-64</i>
<i>Mr. D.P. O'Quinn</i>	<i>1964-71</i>
<i>Dr. T.V. Jenkins</i>	<i>1971-76</i>
<i>Dr. A. Rodney Allbright</i>	<i>1976 to 2014</i>
<i>Dr. Christal Albrecht</i>	<i>2014-</i>

CHAPTER II

ORGANIZATION AND GOVERNANCE

A. BOARD OF REGENTS³

Number of Regents: Nine

Term of Service on Board: Six years (consecutive terms are allowed)

Selection of Regents: Majority vote of District residents. Regents are selected in biennial elections held in even numbered years.

Regular Meetings: Monthly

Board Officers: Chairman, Vice Chairman, Secretary

General Board Responsibility: The Board of Regents derives its legal status from the Texas Constitution and the State Legislature. In discharging its duties, the Board shall function in accordance with applicable state and federal statutes, controlling court decisions, and applicable regulations promulgated pursuant to statute by state and federal agencies. Opinions of the Attorney General shall be used for guidance and interpretation of applicable law. The College Board shall constitute a body corporate and shall govern the community college district. The Board of Regents shall establish policy for the operation of affairs of the college in such a manner as will accomplish the efficient objectives and purposes of higher education for which the college district was created.

Current Regents:

L.H. “Pete” Nash, Chairman

Term Expires – May 2016

James B. DeWitt, Vice Chair

Term Expires – May 2018

Karlis Ercums III, Secretary

Term Expires – May 2016

Mac Barrow

Term Expires – May 2016

Brenda Brown

Term Expires – May 2014

Mike Pyburn

Term Expires – May 2014

Doyle Swindell

Term Expires – May 2018

Cheryl Knappe

Term Expires – May 2014

‘Bel Sanchez

Term Expires – May 2018

Jody Droege (replaces Brenda Brown’s position)

Term Expires – May 2020

B. CHIEF ADMINISTRATOR OF THE COLLEGE³

The Chief Administrator of the College shall be known as the President. The President of Alvin Community College is appointed by the Alvin Community College Board of Regents and shall serve for such time and receive such compensation as it may establish. He shall have broad discretionary authority in carrying out the responsibilities of his office. The President shall report only and directly to the Alvin Community College Board of Regents. He is responsible for the execution of Board policies, within the framework of federal, state, and local laws. He shall represent the faculty and staff in recommending changes to the Board in all policy matters.

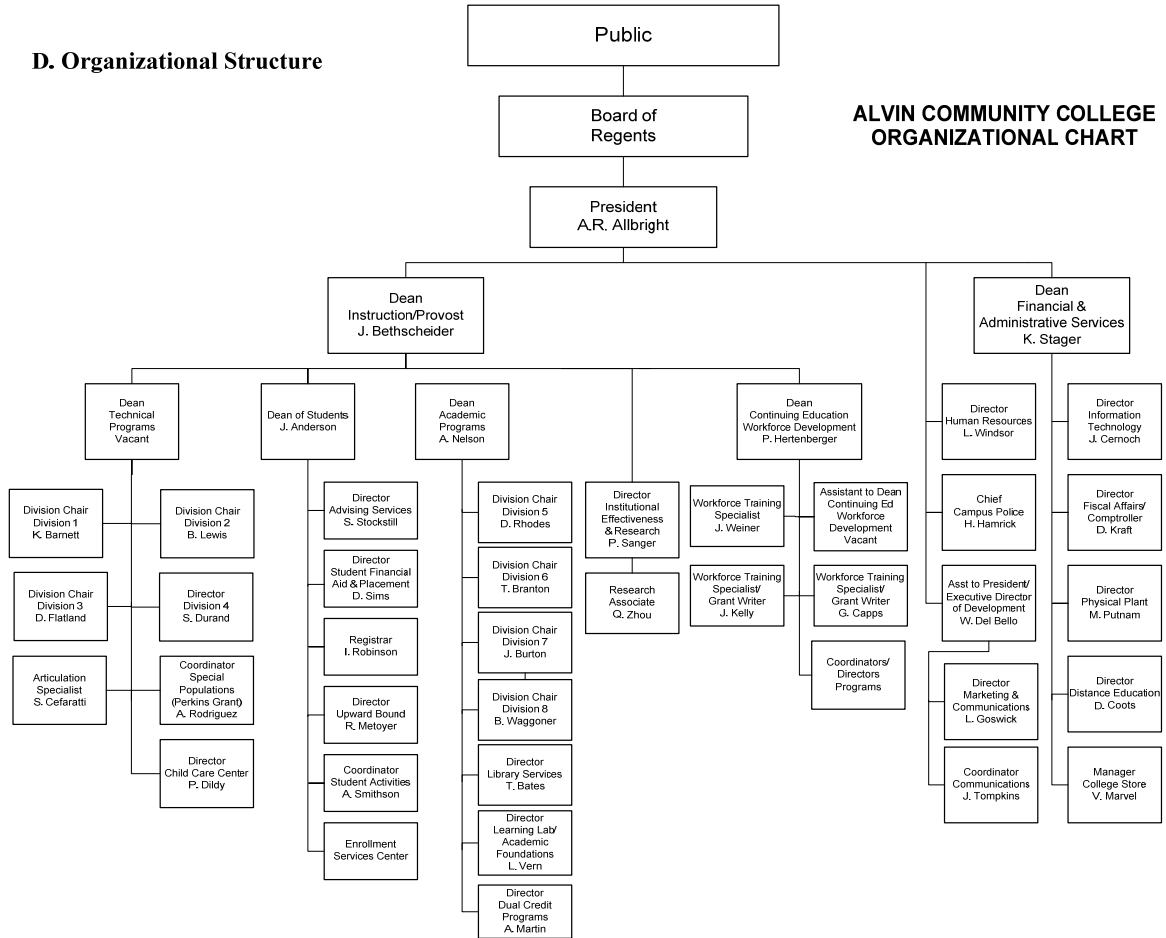
C. STANDING COMMITTEES¹

Standing committees are established each calendar year to focus on specific aspects of the College's functions and to provide an opportunity for faculty and staff to be a part of the decision-making process of the institution. These committees are composed of faculty, staff, and students. Through committee activity, changes in policies and practices can be effected. All full-time personnel are eligible to attend any of the standing committee meetings and are encouraged to do so. If a staff member is interested in topics to be discussed at a given meeting, he or she is encouraged to attend the meeting, make suggestions, and participate in committee discussions. However, only official committee members may vote during a standing committee meeting. The chairperson of a standing committee may also find it necessary to request that certain faculty members, staff members, or students attend a meeting to serve as resource persons.

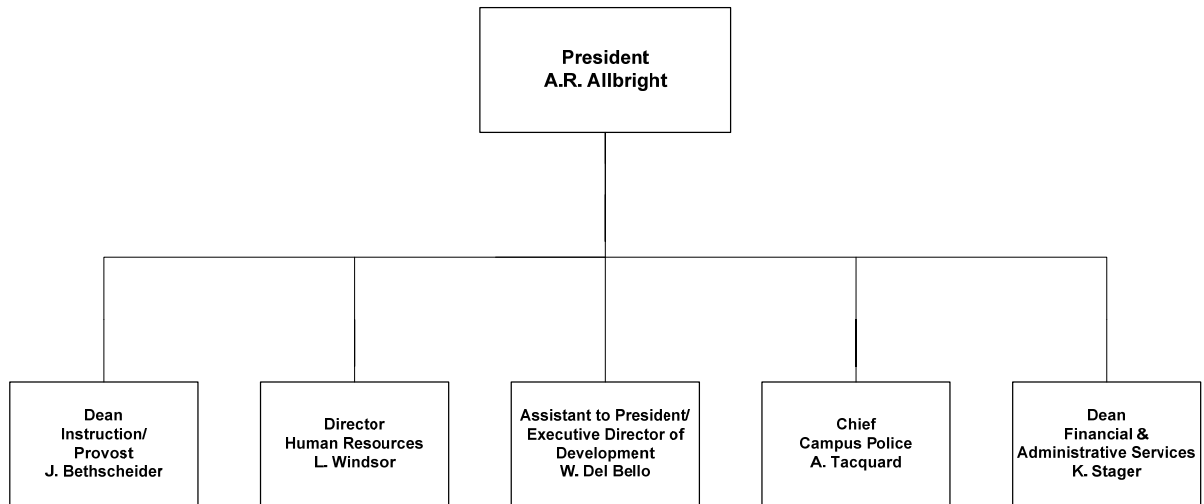
The following Standing Committees have been established.

- Americans with Disabilities Act (ADA)
- Athletics
- Behavioral Intervention Team (designated)
- College Facilities
- Curriculum
- Distance Education
- Honors
- Judicial
- Information Technology
- Marketing & Recruiting
- Professional Development & Wellness
- President's Cabinet
- Scholarship
- Strategic Planning
- Student Success/ Retention
- Tenure (designated)
- TSCM
- Web Advisory

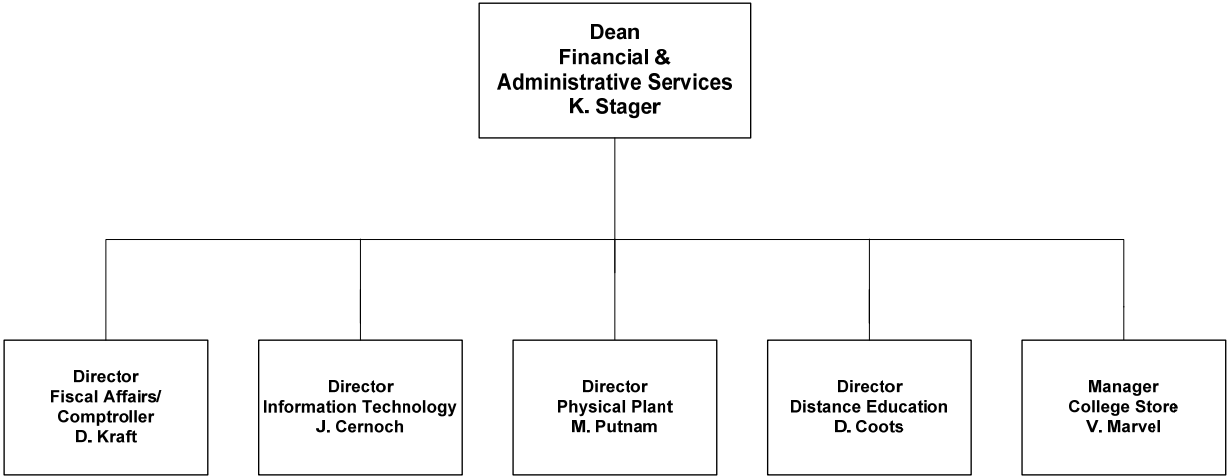
D. Organizational Structure



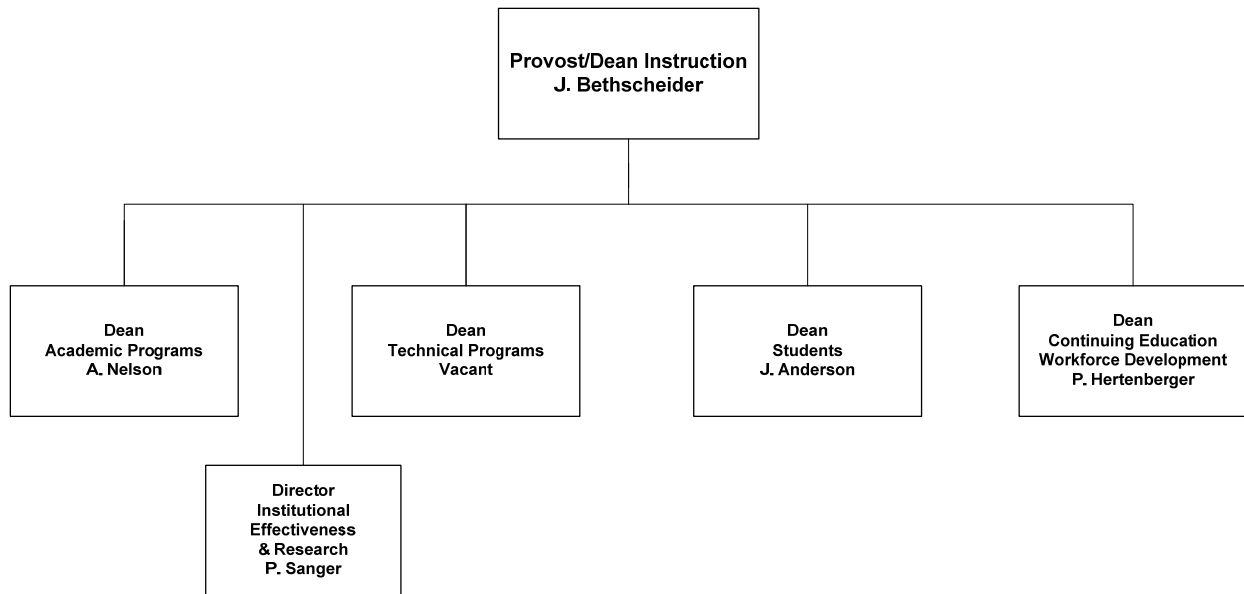
**ALVIN COMMUNITY COLLEGE
ORGANIZATIONAL CHART
REPORTING TO THE
PRESIDENT**



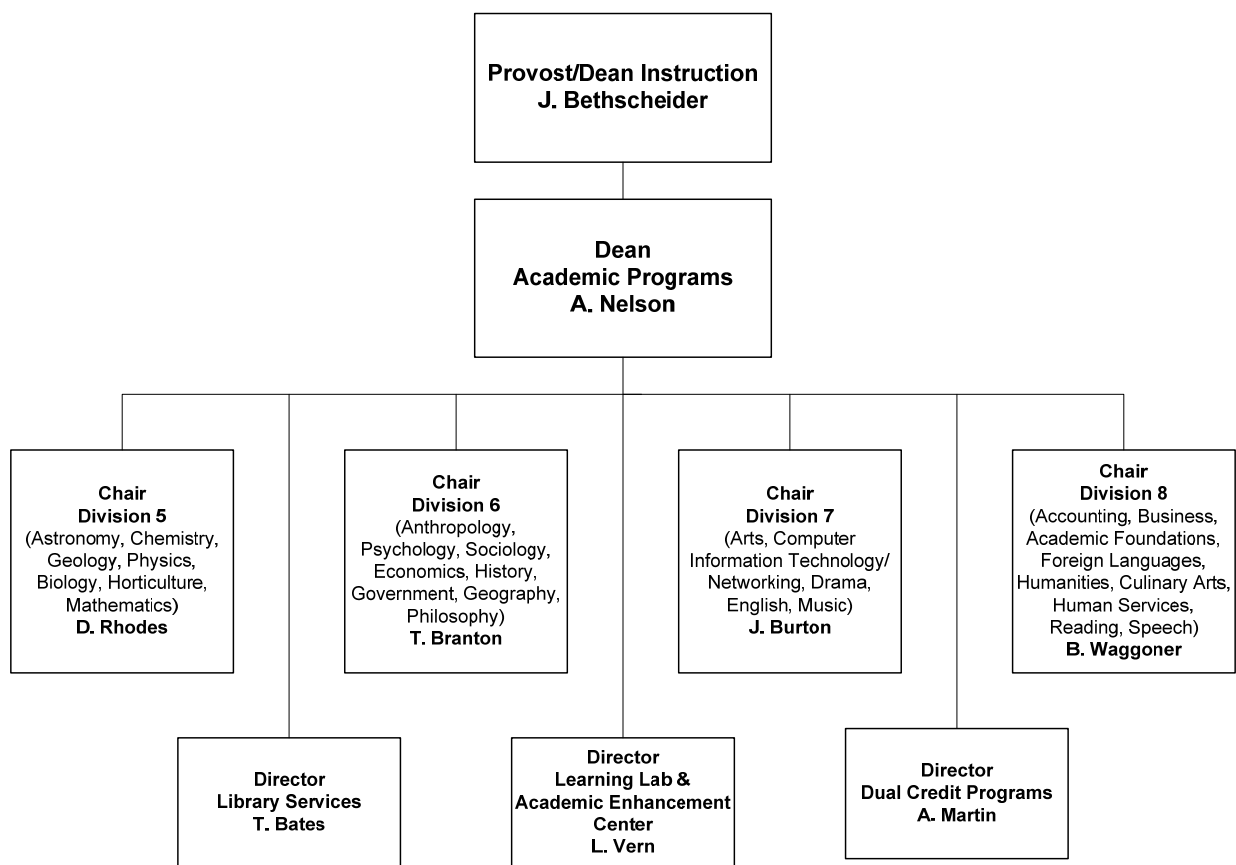
**ALVIN COMMUNITY COLLEGE
ORGANIZATIONAL CHART
REPORTING TO THE
DEAN OF FINANCIAL AND ADMINISTRATIVE SERVICES**



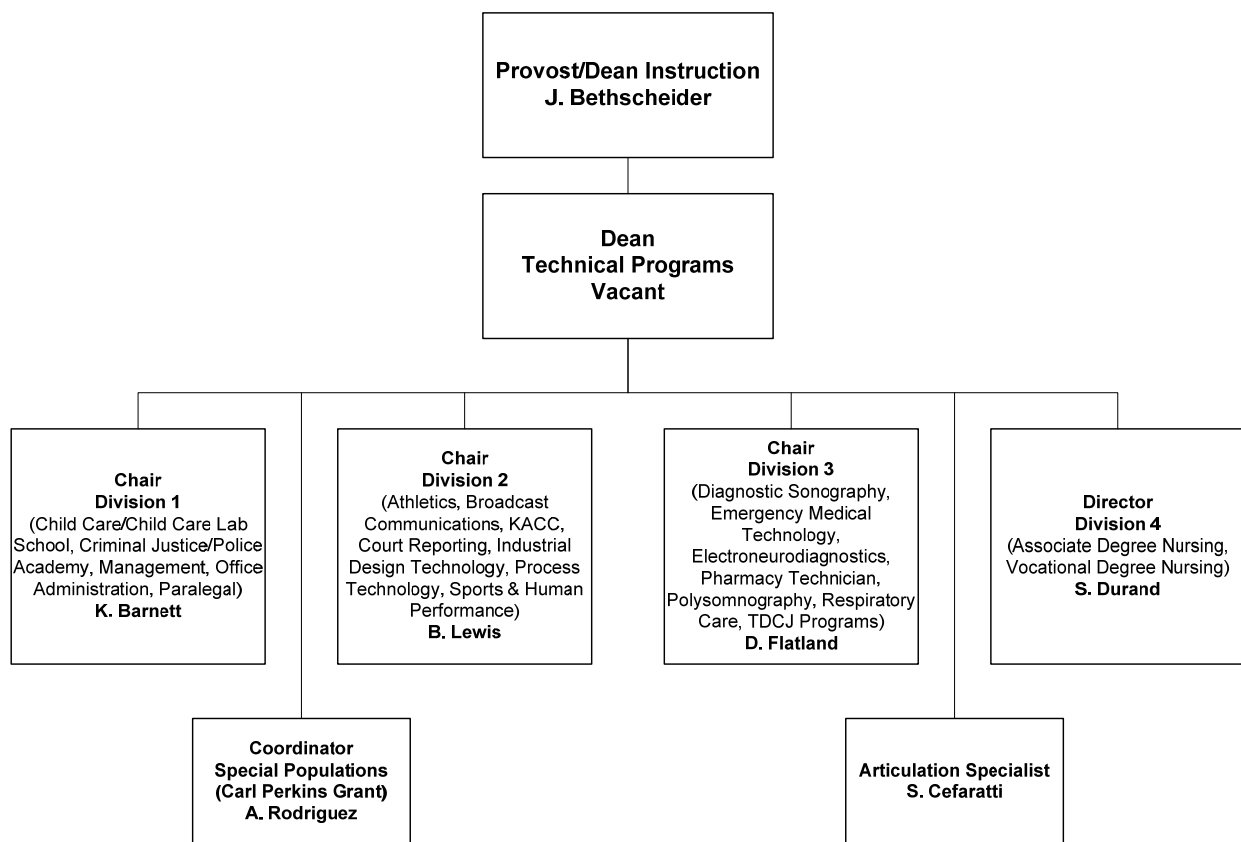
**ALVIN COMMUNITY COLLEGE
ORGANIZATIONAL CHART
REPORTING TO THE
PROVOST/DEAN OF INSTRUCTION**



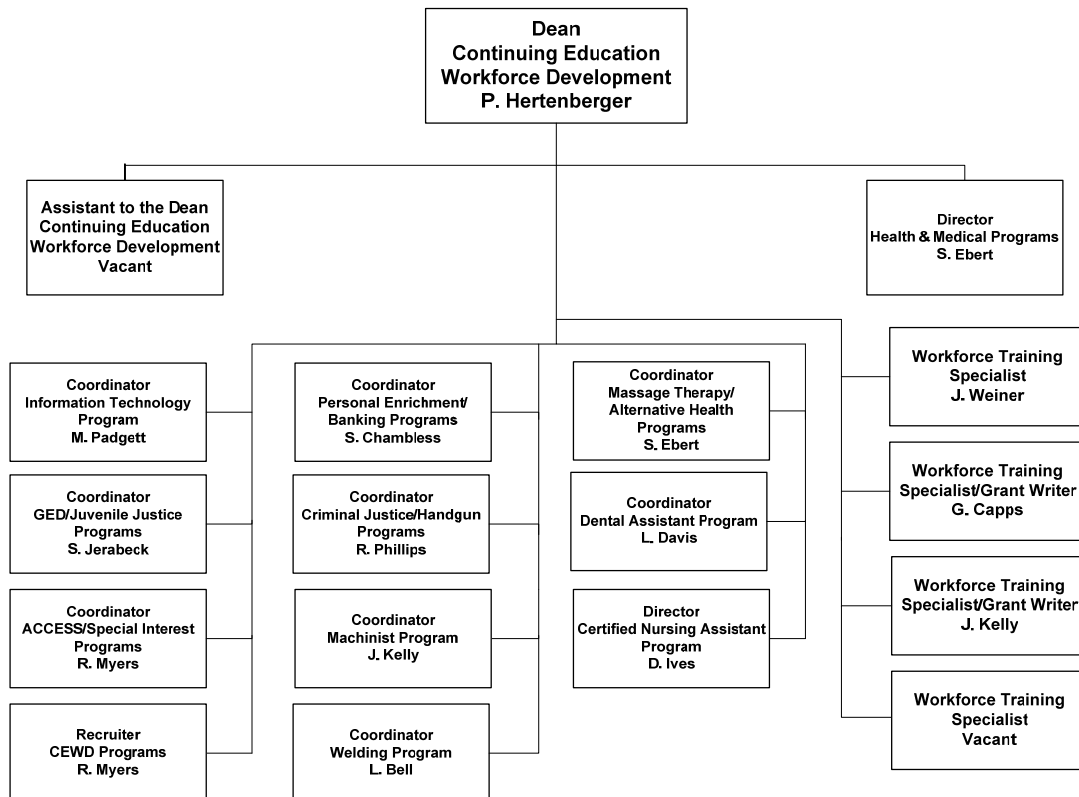
**ALVIN COMMUNITY COLLEGE
ORGANIZATIONAL CHART
REPORTING TO THE
DEAN OF ACADEMIC PROGRAMS**



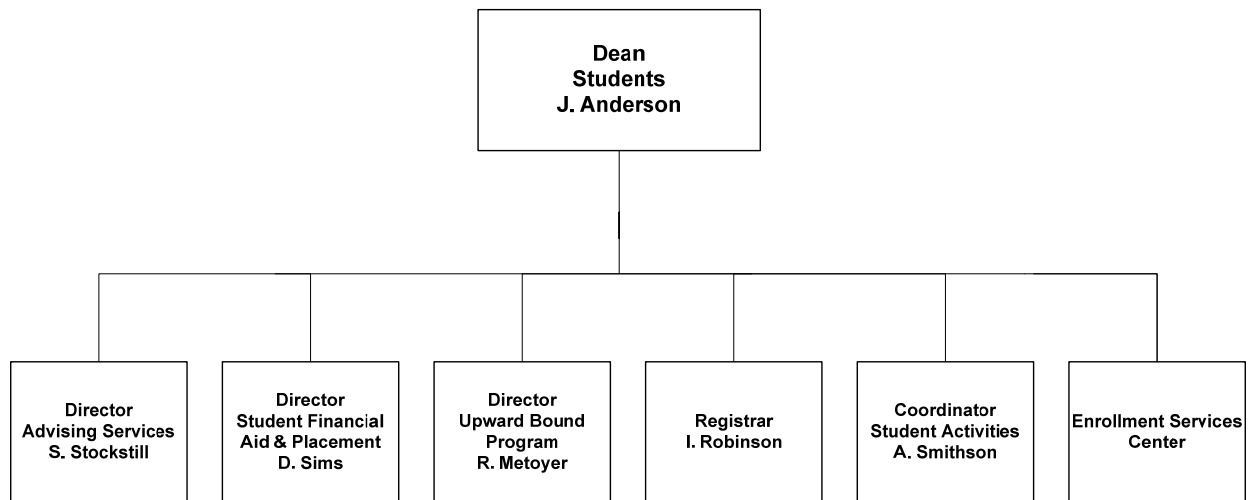
**ALVIN COMMUNITY COLLEGE
ORGANIZATIONAL CHART
REPORTING TO THE
DEAN OF TECHNICAL PROGRAMS**



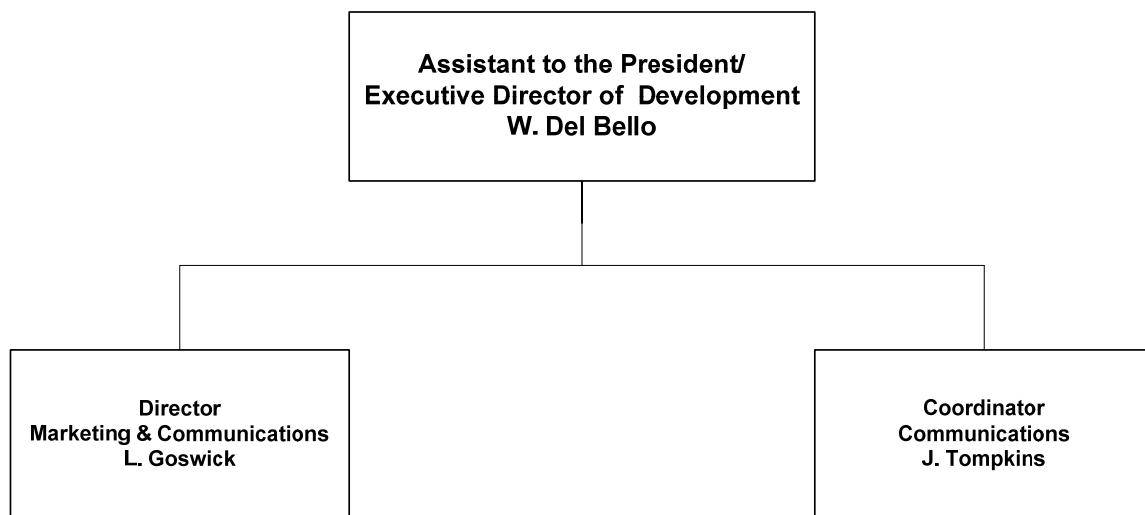
**ALVIN COMMUNITY COLLEGE
ORGANIZATIONAL CHART
REPORTING TO THE
DEAN OF CONTINUING EDUCATION WORKFORCE DEVELOPMENT**



**ALVIN COMMUNITY COLLEGE
ORGANIZATIONAL CHART
REPORTING TO THE
DEAN OF STUDENTS**



**ALVIN COMMUNITY COLLEGE
ORGANIZATIONAL CHART
REPORTING TO THE
ASSISTANT TO THE PRESIDENT/EXECUTIVE DIRECTOR OF DEVELOPMENT**



CHAPTER III

**ALVIN COMMUNITY COLLEGE
FOUNDATION**

A. ALVIN COMMUNITY COLLEGE FOUNDATION, INC.⁷

The Alvin Community College Foundation was established to support the College and its educational mission. Incorporated in 1974 under Texas law as a non-profit corporation, the Foundation is an independent entity that can receive donations and bequests. The foundation also sponsors projects that support student scholarships, faculty development, cultural events, and other advancement programs for the College.

The Foundation is organized to aid the College in three major areas: scholarships for students, support of professional development for ACC personnel, and cultural programs for the College and community. In addition, the Foundation is continually seeking ways to assist the college community through special projects.

All contributions and donations to the Foundation are tax-deductible (to the extent of the law). Donations and gifts from individuals or corporations are solicited for any ongoing program or for new programs which will benefit students and community citizens. The Foundation also accepts bequests and scholarships established as memorials.

Donors have the option of specifying whether their gifts will be for restricted or unrestricted use. Restricted gifts are designated (by the donor) for a specific purpose such as the Student Scholarship Fund. Unrestricted gifts become part of the Foundation's General Fund and are utilized for those purposes which the Foundation Directors deem the most worthy.

Judy Droege is President of the Foundation, and Jim Crumm is Vice President. Other officers are Christal Albrecht, Secretary; Joel Marin, Treasurer; and Wendy Del Bello, Executive Director. Jay Hawkins is Immediate Past President of the organization.

Foundation Board Members include Jay Hawkins, Brenda Brown, Brenda Weber, Chad Dudley, Carol Nelson, David Jircik, Debra Fontenot, Doyle Swindell, Freddie Thompson, James B. DeWitt, Jarrod Smith, Jim Crumm, L.P. "Pete" Nash, Mark Ferguson, Matt Rickaway, Michael Culling, Michele Adams, Paul Herndon, Russell Hillenburg, Ryan Wollam, Shirley Brothers, Delores Calhoun, Rachel de Jongh Janicek, and Shelia Olson.

CHAPTER IV

**THE COLLEGE DISTRICT
AND
ADJOINING AREAS**

A. GENERAL DESCRIPTION

The Alvin Community College District includes 421.8 square miles and covers approximately the eastern third of Brazoria County. Major transportation corridors are: Highway 6, running WNW (toward San Antonio) and ESE (toward Texas City); and Highway 35, running north to Houston and south toward Angleton and Freeport. A significant geographical feature is Chocolate Bayou, which runs nearly the length of the District.

Brazoria County is a Gulf Coast county, the seat of which is located in Angleton. Geographically, the area is a coastal plain which is interlaced with numerous lakes, rivers, and bayous. The county's economy rests on agriculture, oil and gas production, and petrochemical manufacturing.

There are 16 buildings on the main campus of Alvin Community College. It is situated on 114 acres of land between Hwy 35 By-Pass and Mustang Road in Alvin. There are 8 buildings at the Alvin Community College - Pearland Center site, which is located on 5.2 acres at Grand and Broadway in Pearland.

B. THE CITY OF ALVIN

The City of Alvin is located in northeastern Brazoria County. Founded in 1879, Alvin is an established community which is beginning to experience rapid growth due to its proximity to Houston. Alvin is located 32 miles south/southeast of Houston and 33 miles northwest of Galveston.

City Profile (2013-2014):

Alvin Population (2014B Estimate, within city limits) ¹²	25,577
Manvel Population (2013B Estimate, within city limits) ¹²	6,067
Number of Schools (AISD* 2012-2013)¹³	23
Primary/Elementary Schools	14
Middle Schools	5
Senior High Schools	2
Alternative Schools	2

**Alvin Independent School District (AISD) includes Manvel.*

C. ALVIN COMMUNITY COLLEGE DISTRICT AND SERVICE AREA DEMOGRAPHICS ¹²

TABLE IV-1: POPULATION BY COUNT

Population	Alvin	Danbury	Friendswood	Liverpool	Manvel	Pearland	Santa Fe	Brazoria County
2019 Projection	26,259	2,061	39,006	524	6,984	116,505	14,378	363,012
2014B Estimate	25,577	1,976	37,568	506	6,067	100,255	13,482	335,943
2010 Census	24,226	1,712	35,805	482	5,246	90,936	12,220	313,162
2000 Census	21,909	1,650	30,297	424	3,560	43,601	10,805	241,745
Growth 2014-2019 (Projection)	2.7%	4.3%	3.8%	3.6%	15.1%	16.2%	6.6%	8.1%
Growth 2000-2010	10.6%	3.8%	18.2%	13.7%	47.4%	108.6%	13.1%	29.5%

TABLE IV-2: POPULATION BY AGE
(District and Service Area, 2014-2019 Trend)

Population by Age:	District and Service Area	
	2014B Estimate	2019 Projection
Total Population	201,557	226,985
Age 0 - 4	8.2%	8.5%
Age 5 - 14	16.3%	16.2%
Age 15 - 19	6.7%	6.6%
Age 20 - 24	5.7%	5.5%
Age 25 - 34	13.9%	13.4%
Age 35 - 44	16.0%	15.6%
Age 45 - 54	13.9%	13.2%
Age 55 - 64	10.1%	10.7%
Age 65 - 74	5.6%	6.6%
Age 75 - 84	2.6%	2.9%
Age 85 +	0.9%	0.9%

*Population tables derived from Alteryx Analytics based on the district and service areas.
This new system uses different analytics and as such will provide different data than prior years.*

TABLE IV-3: POPULATION BY HOUSEHOLD INCOME
(District and Service Area, 2014-2019 Trend)

Population by Household Income:	District and Service Area	
	2014B Estimate	2019 Projection
Total Households	68,729	77,630
\$0 - \$15,000	7.3%	5.7%
\$15,000 - \$24,999	7.4%	6.3%
\$25,000 - \$34,999	7.8%	6.7%
\$35,000 - \$49,999	11.4%	9.9%
\$50,000 - \$74,999	16.5%	13.6%
\$75,000 - \$99,999	15.7%	15.8%
\$100,000 - \$149,999	20.8%	25.2%
\$150,000 +	13.2%	16.9%
Average Income	\$92,186	\$105,851
Median Income	\$74,556	\$87,667
Per Capita Income	\$31,516	\$36,273

*Population tables derived from Alteryx Analytics based on the district and service areas.
This new system uses different analytics and as such will provide different data than prior years.*

TABLE IV-4: POPULATION BY GENDER
(District and Service Area, 2014-2019 Trend)

Population by Gender:	District and Service Area	
	2014B Estimate	2019 Projection
Male	49.5%	49.6%
Female	50.5%	50.4%

*Population tables derived from Alteryx Analytics based on the district and service areas.
This new system uses different analytics and as such will provide different data than prior years.*

TABLE IV-5: POPULATION BY RACE/ETHNICITY
(District and Service Area, 2014-2019 Trend)

Population by Race/Ethnicity:	District and Service Area	
	2014B Estimate	2019 Projection
Total Population	201,557	226,985
White	63.4%	60.6%
Black	14.0%	15.0%
American Indian or Alaska Native	0.5%	0.5%
Asian/Hawaiian/Pacific Islander	9.4%	10.2%
Other Race	9.7%	10.2%
Two or More Races	3.0%	3.4%
<i>Hispanic Ethnicity</i>	27.7%	29.1%
<i>Not Hispanic or Latino</i>	72.3%	70.9%

*Population tables derived from Alteryx Analytics based on the district and service areas.
This new system uses different analytics and as such will provide different data than prior years.*

CHAPTER V

STUDENTS IN CREDIT PROGRAMS

A. ENROLLMENT DATA

**TABLE V-1:
ACC ENROLLMENT BY UNDUPLICATED HEADCOUNT¹⁵
FALL SEMESTERS**

Fall of	Headcount	Fall of	Headcount	Fall of	Headcount
1955	364	1975	2,480	1995	3,681
1956	403	1976	2,465	1996	3,873
1957	390	1977	2,655	1997	3,719
1958	421	1978	3,015	1998	3,435
1959	394	1979	2,775	1999	3,680
1960	579	1980	3,024	2000	3,531
1961	583	1981	3,035	2001	3,667
1962	721	1982	3,724	2002	4,161
1963*	954	1983	4,034	2003	4,049
1964	1,113	1984	3,937	2004	3,933
1965	1,638	1985	3,925	2005	3,828
1966	1,620	1986	3,918	2006	3,983
1967	1,617	1987	4,243	2007	4,091
1968	1,298	1988	4,152	2008	4,348
1969	1,257	1989	3,906	2009	5,189
1970	1,433	1990	3,892	2010	5,721
1971	1,808	1991	3,914	2011	5,193
1972	1,631	1992	4,085	2012	5,190
1973	1,900	1993	4,036	2013	5,191
1974	1,975	1994	3,864	2014	4,914

THECB PREP Enrollment headcounts exclude flexible entry students; contact and semester credit hours include flexible entry.)

TABLE V-2:
ACC TOTAL ENROLLMENT BY HEADCOUNT¹¹
Fall 2007 - Summer 2014

(Table V-2 is formed by adding Table V-3 to Table V-4)

	2007-08	2008-09	2009-10	2010-11	2011-12	2012-13	2013-14
Fall	4,383	4,539	5,189	5,721	5,242	5,592	5,191
Spring	4,431	4,768	5,603	5,686	5,320	5,318	5,370
Summer	2,793	3,029	3,342	3,086	2,945	3,039	3,264
Grand Total	11,607	12,336	14,134	14,493	13,507	13,949	13,825

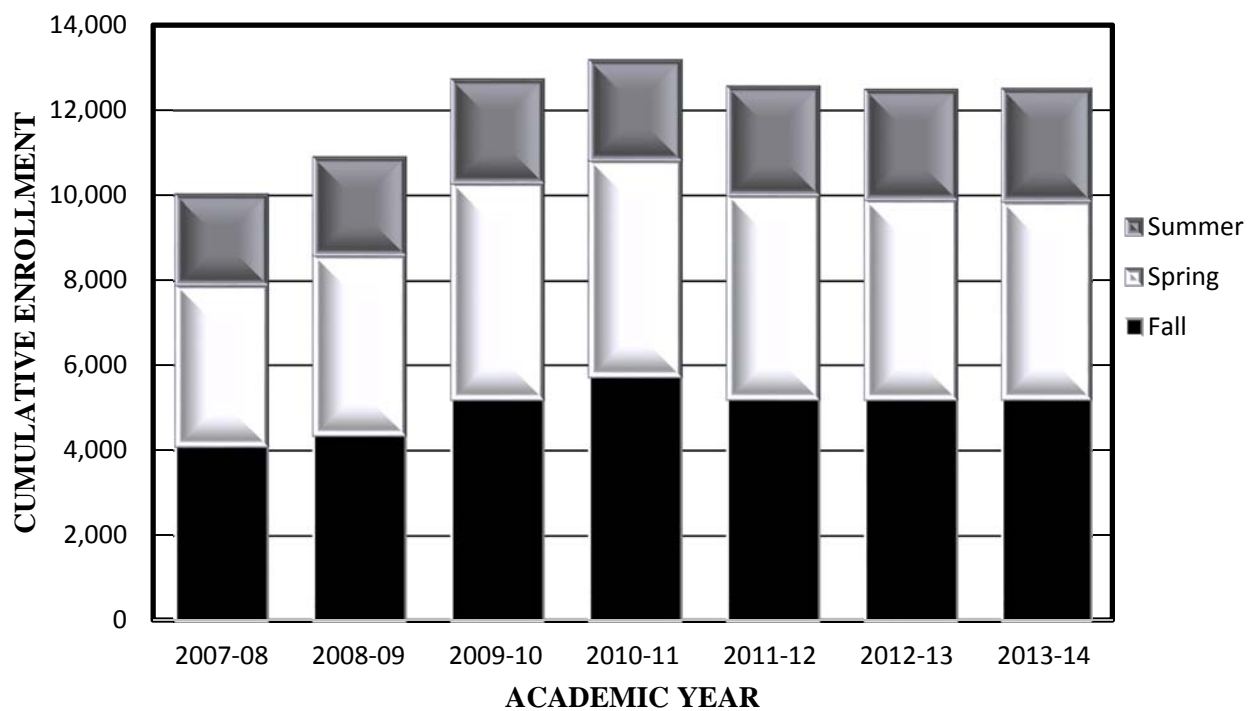
TABLE V-3:
ACC ENROLLMENT BY UNDUPLICATED HEADCOUNT¹⁵
Fall 2007 - Summer 2014

	2007-08	2008-09	2009-10	2010-11	2011-12	2012-13	2013-14
Fall	4,091	4,348	5,189	5,721	5,193	5,190	5,191
Spring	3,811	4,255	5,101	5,107	4,813	4,709	4,674
Summer	2,114	2,288	2,428	2,346	2,547	2,577	2,633
Sub-Total	10,016	10,891	12,718	13,174	12,553	12,476	12,498

TABLE V-4:
ACC FLEX ENTRY ENROLLMENT BY HEADCOUNT¹¹
Fall 2007 – Summer 2014

	2007-08	2008-09	2009-10	2010-11	2011-12	2012-13	2013-14
Fall	292	191	0	0	49	402	0
Spring	620	513	502	579	507	609	696
Summer	679	741	914	740	398	462	631
Sub-Total	1,591	1,445	1,416	1,319	954	1,473	1,327

**FIGURE V-1
ALVIN COMMUNITY COLLEGE
UNDUPLICATED HEADCOUNT: FALL 2007 - SUMMER 2014
(EXCLUDES FLEXIBLE ENTRY)**



**TABLE V-5:
CONTACT HOURS IN FALL SEMESTERS¹⁵**

Fall of	Total Funded and Non-State Funded Contact Hours
1991	801,136
1992	869,576
1993	831,584
1994	795,544
1995	753,208
1996	797,576
1997	738,576
1998	676,160
1999	713,376
2000	710,832
2001	716,048
2002	827,024

Fall of	Total Funded and Non-State Funded Contact Hours
2003	877,472
2004	884,432
2005	837,216
2006	865,696
2007	855,800
2008	810,984
2009	911,728
2010	1,002,560
2011	946,776
2012	935,136
2013	915,256
2014	855,440

THECB PREP Enrollment headcounts from the THECB exclude flexible entry students; contact and semester credit hours include flexible entry.

TABLE V-6:
ACC TOTAL FUNDED CONTACT HOURS¹¹
Fall 2007 – Summer 2014
 (Table V-6 is formed by adding Table V-7, Table V-8, and V-9)

	2007-08	2008-09	2009-10	2010-11	2011-12	2012-13	2013-14
Grand Total	2,141,304	2,143,912	2,363,344	2,430,304	2,303,760	2,197,112	2,166,256

TABLE V-7:
ACC ACADEMIC FUNDED CONTACT HOURS¹¹
Fall 2007 – Summer 2014

	2007-08	2008-09	2009-10	2010-11	2011-12	2012-13	2013-14
Fall	494,696	526,656	618,000	670,368	615,856	592,288	589,472
Spring	459,648	504,624	610,224	598,576	596,216	538,928	560,392
Summer	186,112	213,296	241,648	233,648	211,008	223,360	218,704
Sub-Total	1,140,416	1,244,576	1,469,872	1,502,592	1,423,080	1,354,576	1,368,568

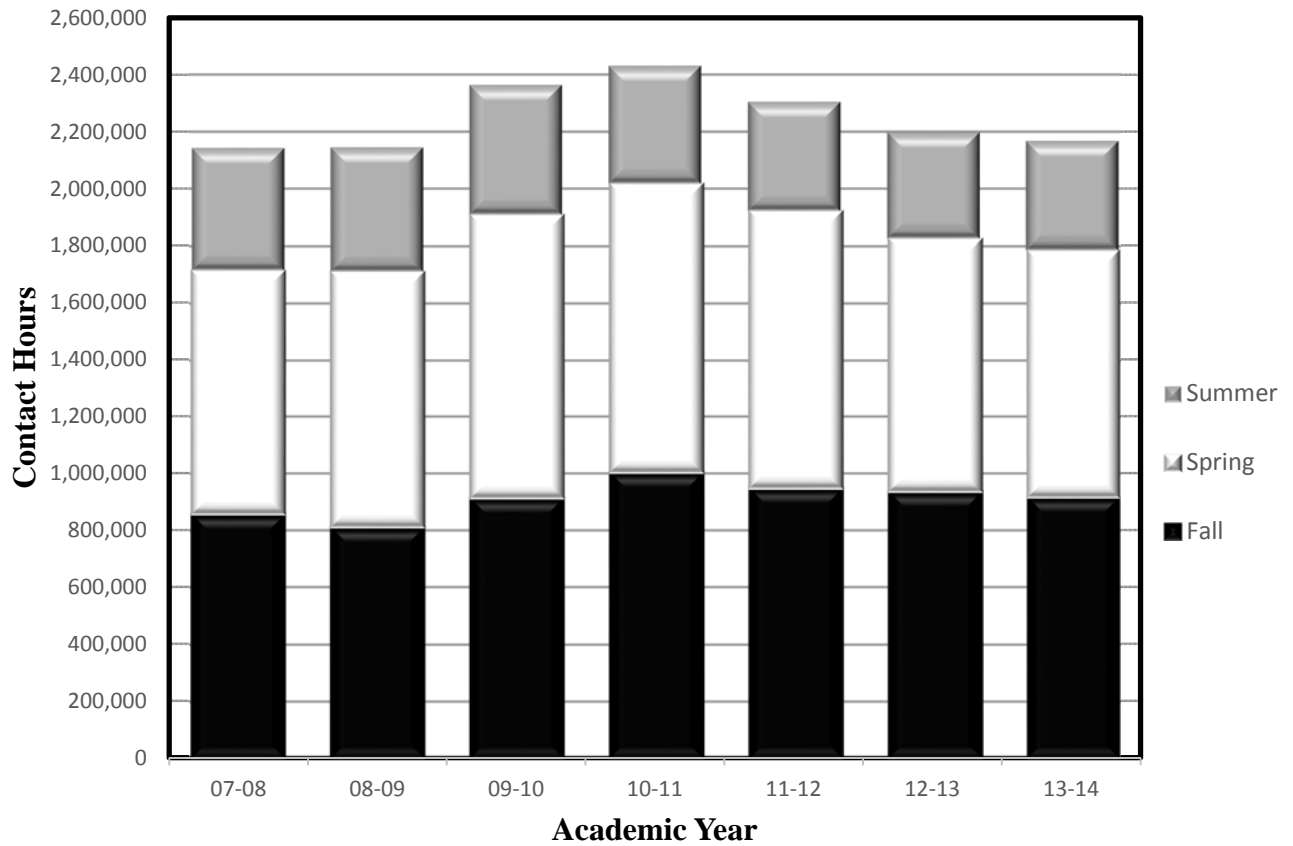
TABLE V-8:
ACC TECHNICAL FUNDED CONTACT HOURS¹¹
Fall 2007 – Summer 2014

	2007-08	2008-09	2009-10	2010-11	2011-12	2012-13	2013-14
Fall	351,384	274,872	283,440	321,344	321,048	332,912	315,336
Spring	389,960	387,248	376,736	406,968	367,400	338,640	300,944
Summer	237,064	215,520	210,288	176,840	168,888	146,536	159,904
Sub-Total	978,408	877,640	870,464	905,152	857,336	818,088	776,184

TABLE V-9:
ACC NON-STATE FUNDED CONTACT HOURS¹¹
Fall 2007 – Summer 2014

	2007-08	2008-09	2009-10	2010-11	2011-12	2012-13	2013-14
Fall	9,760	8,704	10,288	10,848	9,872	9,936	10,448
Spring	8,448	7,968	8,176	7,552	9,696	10,512	7,408
Summer	4,272	5,024	4,544	4,160	3,776	4,000	3,648
Sub-Total	22,480	21,696	23,008	22,560	23,344	24,448	21,504

**FIGURE V-2
ALVIN COMMUNITY COLLEGE
CONTACT HOUR HISTORY: FALL 2007-SUMMER 2014
(INCLUDES FUNDED, NON-FUNDED, AND FLEXIBLE ENTRY)**



B. STUDENT CHARACTERISTICS

**TABLE V-10:
AGE AND GENDER TRENDS OF STUDENTS¹⁵**
(Includes TDCJ)

Fall of	Average Age	% 21 & Under	% Males	% Females
1990	26	44%	47%	53%
1991	26	44%	44%	56%
1992	26	41%	45%	55%
1993	26	40%	44%	56%
1994	27	39%	45%	55%
1995	27	41%	45%	55%
1996	26	43%	46%	54%
1997	26	45%	46%	54%
1998	26	45%	45%	55%
1999	27	45%	48%	52%
2000	26	47%	47%	53%
2001	26	48%	46%	54%
2002	26	46%	44%	56%
2003	26	49%	44%	56%
2004	26	48%	43%	57%
2005	26	48%	43%	57%
2006	26	48%	45%	55%
2007	25	51%	43%	57%
2008	24	55%	44%	56%
2009	24	58%	44%	56%
2010	24	56%	45%	55%
2011	25	53%	42%	58%
2012	24	58%	42%	58%
2013	23	61%	42%	58%
2014	23	60%	44%	56%

TABLE V-11:
RACE/ETHNICITY TRENDS OF STUDENTS¹⁵
(Includes TDCJ)

Fall of	White	Black	Hispanic	Other
1990	80%	7%	11%	2%
1991	80%	7%	11%	2%
1992	80%	7%	12%	2%
1993	78%	7%	13%	2%
1994	76%	8%	13%	3%
1995	75%	8%	14%	3%
1996	74%	7%	16%	3%
1997	74%	7%	16%	3%
1998	73%	8%	17%	2%
1999	72%	8%	16%	4%
2000	72%	7%	17%	4%
2001	70%	8%	18%	4%
2002	70%	8%	18%	4%
2003	71%	7%	19%	3%
2004	71%	7%	18%	4%
2005	68%	7%	21%	3%
2006	67%	7%	22%	3%
2007	65%	8%	23%	4%
2008	63%	9%	23%	5%
2009	60%	10%	25%	5%
2010	58%	10%	25%	7%
2011	57%	10%	25%	8%
2012	55%	10%	28%	7%
2013	52%	10%	29%	9%
2014	51%	11%	30%	8%

TABLE V-12:
TUITION TRENDS OF STUDENTS¹⁵
(Includes TDCJ)

Fall of	% Of Students Paying In-District Tuition
1991	41%
1992	41%
1993	41%
1994	39%
1995	40%
1996	39%
1997	39%
1998	38%
1999	41%
2000	40%
2001	41%
2002	41%

Fall of	% Of Students Paying In-District Tuition
2003	45%
2004	47%
2005	47%
2006	46%
2007	45%
2008	45%
2009	52%
2010	45%
2011	48%
2012	45%
2013	44%
2014	44%

**TABLE V-13:
ENROLLMENT AGE TRENDS OF STUDENTS¹⁵**

Fall of	Under 18	18-21	22-24	25-30	31-35	36-50	51-64	65 & Over	Total
2001	7%	41%	11%	13%	8%	17%	3%	0%	100%
2002	8%	38%	13%	14%	8%	17%	2%	0%	100%
2003	10%	39%	13%	12%	8%	15%	2%	0%	99%
2004	9%	39%	14%	13%	8%	14%	2%	0%	99%
2005	10%	39%	14%	15%	8%	13%	2%	0%	101%
2006	11%	38%	13%	14%	8%	14%	3%	0%	101%
2007	14%	37%	12%	14%	7%	13%	2%	0%	99%
2008	21%	36%	11%	13%	7%	12%	2%	0%	101%
2009	25%	33%	10%	12%	6%	11%	2%	0%	99%
2010	25%	32%	10%	13%	7%	11%	2%	0%	100%
2011	23%	35%	10%	12%	7%	10%	2%	0%	99%
2012	23%	34%	11%	12%	7%	10%	2%	0%	99%
2013	26%	35%	11%	10%	6%	9%	2%	.2%	99%
2014	24%	36%	11%	11%	6%	9%	2%	.2%	99%

**TABLE V-14:
ENROLLMENT LEVEL TRENDS OF STUDENTS¹⁵**

Fall of	Freshman	Sophomore	Associate	Bachelors	Unclassified	Total
2001	68%	19%	3%	0%	10%	100%
2002	69%	17%	1%	0%	12%	100%
2003	55%	26%	2%	1%	16%	100%
2004	65%	22%	2%	1%	11%	101%
2005	63%	21%	2%	1%	13%	100%
2006	63%	21%	1%	0%	15%	100%
2007	65%	20%	1%	0%	14%	100%
2008	71%	16%	3%	0%	9%	99%
2009	70%	17%	3%	1%	9%	99%
2010	69%	17%	3%	1%	10%	100%
2011	70%	17%	3%	1%	8%	99%
2012	65%	19%	4%	1%	11%	100%
2013	66%	18%	4%	1%	11%	100%
2014	64%	19%	4%	2%	11%	100%

C. ENROLLMENT PROJECTIONS¹⁵

TABLE V-15:
PROBABLE FUTURE UNDUPLICATED HEADCOUNT AND ACTUAL GROWTH
(Does not include flexible entry)

Fall of	Actual Headcount	1.0% Growth	1.5% Growth	2.0% Growth	Actual Growth
1990	3,892				-0.36%
1991	3,914				0.57%
1992	4,085				4.37%
1993	4,036				-1.20%
1994	3,864				-4.26%
1995	3,681				-4.74%
1996	3,873				5.22%
1997	3,719				-3.98%
1998	3,435				-7.64%
1999	3,680				7.13%
2000	3,531				-4.05%
2001	3,667				3.85%
2002	4,161				13.47%
2003	4,049				-2.69%
2004	3,933				-2.86%
2005	3,828				-2.74%
2006	3,983				3.89%
2007	4,091				2.64%
2008	4,348				5.91%
2009	5,189				19.34%
2010	5,721				10.25%
2011	5,193				-9.23%
2012	5,190				-0.06%
2013	5,191				0.02%
2014	4,914				-5.34%
2015		4,963	4,988	5,012	

*THECB PREP Enrollment headcounts from the THECB excludes flexible entry students; contact and semester credit hours include flexible entry.

D. TEXAS DEPARTMENT OF CRIMINAL JUSTICE (TDCJ)

Alvin Community College provides postsecondary educational services to offender students in the following TDCJ units:

- ◆ Clemens
- ◆ Jester III
- ◆ Ramsey I
- ◆ Stringfellow

Courses include general academic and technical programs.

ACC first offered TDCJ courses in 1965, and 90 offender students enrolled. In the spring of 1999, ACC was awarded a contract to provide “Youthful Offender” workforce development classes. Although inmate enrollment can fluctuate substantially from one year to the next, these changes seem to result from internal conditions at the units and revisions of TDCJ policies and procedures. Programs are also impacted by state and national budget changes.

We offer the following degree plans:

- ◆ AAS Industrial Design
- ◆ AAS Computer Information Technology
- ◆ AAS Culinary Arts
- ◆ AAS Management
- ◆ AAS Human Services
- ◆ Along with certifications in all the above and
- ◆ Automotive Technology

E. TECHNICAL PROGRAMS

**TABLE V-16:
TECHNICAL CREDIT HOURS¹⁵**
(Non-State Funded credit hours are not included)

Fall of	On-Campus Funded Technical Credit Hours	TDCJ Funded Technical Credit Hours	Total Funded Technical Credit Hours	% of All Funded ACC Credit Hours
1991	10,609	143	10,752	30%
1992	10,760	0	10,760	28%
1993	10,549	234	10,783	29%
1994	9,982	246	10,228	29%
1995	9,957	204	10,161	29%
1996	10,521	279	10,800	30%
1997	9,716	447	10,163	30%
1998	7,200	270	7,470	24%
1999	7,327	111	7,438	23%
2000	7,218	270	7,488	23%
2001	7,457	144	7,601	23%
2002	8,616	300	8,916	24%
2003	8,732	2,504	11,236	29%
2004	9,093	2,382	11,475	29%
2005	8,740	1,963	10,703	29%
2006**	-	-	11,405	-
2007**	-	-	11,990	-
2008**	-	-	9,496	-
2009**	-	-	9,748	-
2010**	-	-	11,006	-
2011**	-	-	10,863	-
2012**	-	-	11,233	-
2013**	-	-	10,640	-
2014**	-	-	11,108	-

*Only total credit hours were reported.

**THECB PREP no longer disaggregates data (2006). As the data are no longer disaggregated, the percent of funded hours cannot be accurately determined.

**TABLE V-17:
TECHNICAL CONTACT HOURS¹⁵**

Fall of	On-Campus Funded Technical Contact Hours	TDCJ Funded Technical Contact Hours	Total Funded Technical Contact Hours	% of All Funded ACC Contact Hours
1991	322,432	2,448	324,880	41%
1992	336,632	0	336,632	39%
1993	313,232	3,744	316,976	38%
1994	301,544	3,936	305,480	38%
1995	283,656	3,264	286,920	38%
1996	310,008	5,232	315,240	40%
1997	279,664	7,456	287,120	39%
1998	223,072	5,024	228,096	34%
1999	231,072	2,080	233,152	33%
2000	229,568	4,640	234,208	33%
2001	221,648	2,560	224,208	31%
2002	264,256	5,088	269,344	33%
2003	265,392	73,104	338,496	39%
2004	272,464	69,824	342,288	39%
2005	257,120	57,920	315,040	38%
2006**	-	-	353,536	-
2007**	-	-	351,384	-
2008**	-	-	274,872	-
2009**	-	-	283,440	-
2010**	-	-	321,344	-
2011**	-	-	321,048	-
2012**	-	-	332,912	-
2013**	-	-	315,336	-
2014**	-	-	310,448	-

**Only total credit hours were reported.*

***THECB PREP no longer disaggregates data (2006). As the data are no longer disaggregated, the percent of funded hours cannot be accurately determined*

F. ACADEMIC PROGRAMS

**TABLE V-18:
ACADEMIC CREDIT HOURS¹⁵**

Fall of	On-Campus Funded Academic Credit Hours	TDCJ Funded Academic Credit Hours	Total Funded Academic Credit Hours	% of All Funded ACC Credit Hours
1991	24,418	1,251	25,669	70%
1992	25,654	1,770	27,424	72%
1993	24,958	1,659	26,617	71%
1994	23,039	2,127	25,166	71%
1995	22,185	2,130	24,315	71%
1996	22,941	2,292	25,233	70%
1997	21,623	2,029	23,652	70%
1998	21,257	1,974	23,231	76%
1999	22,882	2,385	25,267	77%
2000	22,751	2,094	24,845	77%
2001	23,510	2,214	25,724	77%
2002	26,633	2,295	28,928	76%
2003	26,430	1,504	27,934	71%
2004	25,719	1,875	27,594	71%
2005	24,473	1,830	26,303	71%
2006**	-	-	26,432	-
2007**	-	-	25,763	-
2008**	-	-	27,951	-
2009**	-	-	32,872	-
2010**	-	-	35,511	-
2011**	-	-	32,578	-
2012**	-	-	31,462	-
2013**	-	-	31,854	-
2014**	-	-	28,842	-

*Only total credit hours were reported.

** THECB PREP no longer disaggregates data (2006). As the data are no longer disaggregated, the percent of funded hours cannot be accurately determined.

**TABLE V-19:
ACADEMIC CONTACT HOURS¹⁵**

Fall of	On-Campus Funded Academic Contact Hours	TDCJ Funded Academic Contact Hours	Total Funded Academic Contact Hours	% of All Funded ACC Contact Hours
1991	453,888	22,368	476,256	59%
1992	502,544	30,400	532,944	61%
1993	486,896	27,712	514,608	62%
1994	451,296	38,768	490,064	62%
1995	429,680	36,608	466,288	62%
1996	442,432	39,904	482,336	60%
1997	415,120	36,512	451,632	61%
1998	414,016	34,048	448,064	66%
1999	438,688	41,536	480,224	67%
2000	440,320	36,176	476,496	67%
2001	453,040	38,448	491,488	69%
2002	515,760	40,480	556,240	67%
2003	511,024	24,672	535,696	61%
2004	501,120	31,168	532,288	61%
2005	477,936	30,576	508,512	62%
2006**	-	-	512,160	-
2007**	-	-	494,656	-
2008**	-	-	526,656	-
2009**	-	-	626,752	-
2010**	-	-	670,368	-
2011**	-	-	615,856	-
2012**	-	-	592,288	-
2013**	-	-	589,472	-
2014**	-	-	537,184	-

**Only total contact hours were reported.*

*** THECB PREP no longer disaggregates data (2006). As the data are no longer disaggregated, the percent of funded hours cannot be accurately determined. (Enrollment headcounts from the THECB exclude flexible entry students; contact and semester credit hours include flexible entry.)*

G. DEGREES AND CERTIFICATES EARNED

**TABLE V-20:
DEGREES/CERTIFICATES EARNED SINCE 1993-94¹⁵**

Fiscal Year	Associate Degrees	Certificates	Year Totals
1993-94	409	293	702
1994-95	412	229	641
1995-96	346	462	808
1996-97	337	463	800
1997-98	294	408	702
1998-99	329	242	571
1999-00	279	223	502
2000-01	301	264	565
2001-02	289	376	665
2002-03	381	332	713
2003-04	357	330	687
2004-05	384	303	687
2005-06	387	233	620
2006-07	421	424	845
2007-08	410	354	764
2008-09	405	400	805
2009-10	437	398	835
2010-11	524	403	927
2011-12	552	363	915
2012-13	604	312	916
2013-14	736	278	1,014
TOTALS	9,049	7,478	15,527

THECB PREP no longer disaggregates data (2006). The table has been updated to reflect this change.

CHAPTER VI

CONTINUING EDUCATION PROGRAMS

A. CONTINUING EDUCATION EXECUTIVE SUMMARY⁴

The Continuing Education Department strives to provide programs that incorporate current and new technical courses, training partnerships with business and industry, and opportunities for individuals to acquire and upgrade skills or seek personal enrichment.

With the ever changing economy and the rapid growth of Alvin Community College's (ACC) district and service area, Continuing Education (CE) is in constant transition. From marketing, to offerings, to community interaction and the need to be responsive to business and industry, CE is changing as surrounding communities do.

Female enrollments in Continuing Education courses accounted for 1,087 (41%) of all Continuing Education students and male enrollments were 1,538 (59%) in academic year 2013-2014.

An analysis of Continuing Education course enrollments by ethnicity showed the following:

Ethnicity	FY 2012	FY 2013	FY 2014
Caucasian	1,696	1,346	1,323
Black	208	242	219
Hispanic	464	687	605
Asian	123	104	149
Native American	17	9	0
International	1	9	14
Unknown	771	281	315
	3,280	2,678	2,625

B. CONTINUING EDUCATION PROGRAM ENROLLMENT DATA

ABE/GED/ESL⁴

Adult Basic Education (ABE) and General Education Development (GED) serve adults seventeen or older who have not finished high school. ABE offers instruction of grades 1 through 8. GED offers instruction of grades 9 through 12. English as a Second Language (ESL) serves non-English speaking citizens. ABE/GED/ESL are funded by Region IV E.S.C. and Alvin Community College. Additionally, the number of students served through TANF (Temporary Assistance to Needy Families) is recorded.

**TABLE VI - 1:
NUMBER OF STUDENTS SERVED**

	2007-08*	2008-09*	2009-10*	2010-11*	2011-12*	2012-13*	2013-14
ABE	53	35	38	31	0	0	0
GED	160	173	200	165	173	131	111
ESL	146	153	178	0**	0**	0**	0**
TANF	10	24	8	0	0	0	0
TOTAL	369	385	424	196	173	131	111

**Includes Alvin Community College-Pearland Center students. **ACC no longer offers ESL classes through Continuing Education.*

Source: Datatel & CBM00A

C. WORKFORCE TRAINING PROGRAMS

**TABLE VI-2:
NUMBER OF STUDENTS SERVED THROUGH WORKFORCE TRAINING⁴**
(Workforce training and supplementary programming are supported by tuition and fees, contract training, contact hour reimbursement, and other institutional funds.)

List of Programs	2007-08	2008-09**	2009-10**	2010-11****	2011-12****	2012-2013****	2013-14
Air Conditioning	0	0	0	0	0	0	0
Auto Mechanics	0	0	0	0	0	0	0
Child Care	1	0	0	0	0	0	0
Clerical	0	0	0	0	0	0	0
Construction & Maintenance	0	0	0	0	0	0	0
Data Processing	104	192	343	235*	151*	44	57
Drafting	4	5	4	8	23	23	18
Floral	0	0	0	0	0	0	0
Food Service	0	3	0	0	0	0	0
Gen. Ind.	0	0	0	0	0	0	0
Health/Medical	890	815	1,274	1,490	1,108	899	950
Industrial/TSTC	0	0	14	32	85	0	0
Insurance/Bank/Finance	116	16	0	11	22	10	0
Law Enforcement	57	80	43	67	70	68	3
Machine Shop	0	0	0	0	0	70	104
Microcomputer Repair	0	0	0	0	0	0	0
Mid-Management	0	0	0	0	0	53	36
Personal Prot. & Safety	238	237	196	129***	105***	113	4
Petro/Chemical	0	0	0	0	0	0	0
Printing	0	0	0	0	0	0	0
Professional Development	2,400	2,984*	1,106	847*	1,016*	380	1,195
Real Estate	262	310	350	218	102	54	18
Small Engine Repair	0	0	0	0	0	0	0
Transportation	22	12	28	12	17	39	36
Welding	143	197	191	146*	151*	181	251
TDCJ Enrollments	416	768	1,096***	372***	312***	215	212
Total	4,653	5,619	4,645	3,567	3,162	2,149	2,884

*Includes enrollments for Dish Network Training Series **Includes enrollments for TWC PetroChem Grant Classes. ***Includes both TDCJ and Brazoria County Juvenile Justice enrollments for 2009-2010. ****Includes enrollment for PPC Grant Classes.

D. OTHER CONTINUING EDUCATION PROGRAMS

**TABLE VI-3:
NUMBER OF AVOCATIONAL, RECREATIONAL, AND SPECIAL INTEREST
STUDENT ENROLLMENTS⁴**

(Support includes tuition, fees and other institutional funds.)

List of Programs	2006-2007	2007-2008	2008-2009	2009-2010	2010-2011	2011-2012	2012-2013	2013-14
Art	21	11	17	1	10	10	6	0
Defensive Driving	0	0	0	264***	259	335	313	211
Cabinetmaking	0	0	0	0	0	0	0	0
Personal Development*	193	251	320	358	353	258	604	337
Foreign Language	18	8	3	92	15	26	0	0
Recreation & Phys. Ed.	248	263	225	381	346	392	330	269
Senior Adults**	249	124	180	224	125	130	57	38
Small Business	0	0	0	0	0	0	0	0
Special Interest	116	60	47	300*	152	170	73	61
Youth	465	334	257	275	49	27	13	0
TOTAL	1,310	1,051	1,049	1,895	1,309	1,348	1,396	916

*Includes GED and Ed2Go students (except Information Technology and Health & Medical courses). **Does not include computer classes – that total is included in Data Processing. *** This figure reflects the Motorcycle Safety enrollments for 2009-2010

E. ALL CONTINUING EDUCATION PROGRAMS COMBINED

**TABLE VI-4:
ALL CONTINUING EDUCATION STUDENTS ENROLLED⁴**

List of Programs	2005-06	2006-07	2007-08	2008-09	2009-10	2010-11	2011-12	2012-13	2013-14
ABE/GED/ESL/TANF	601	426	369	385	424	196	173	131	111
Workforce Training	5,056	8,624	4,653	5,619	4,645	3,567	3,162	2,149	2,884
Other	1,678	1,310	1,051	1,049	1,895	1,309	1,348	1,396	916
TOTAL	7,335	10,360	6,073	7,053	6,964	5,072	4,683	3,676	3,911

**TABLE VI-5:
CONTINUING EDUCATION CONTACT HOURS⁴**

	2005-06	2006-07	2007-08	2008-09	2009-10	2010-11	2011-12	2012-13	2013-14
QUARTER I	35,055	134,011	100,385	45,176	40,048	33,080	27,749	23,439	37,041
QUARTER II	32,104	95,666	28,354	33,102	28,460	24,522	19,831	18,446	25,126
QUARTER III	20,583	61,770	19,341	30,793	29,894	21,176	25,324	18,449	27,785
QUARTER IV	23,458	73,582	26,632	27,595	41,690	23,235	26,131	21,847	23,173
TOTAL**	111,200	365,029	174,712	136,666	140,092	102,013	99,035	82,181	113,125

***Total includes TDCJ Contact Hour and TWC Grant Courses for Dish Network Training Contact Hour which ended in Quarter I TWC Grant POMSIG classes started in Quarter IV*

F. CENTER FOR PROFESSIONAL AND WORKFORCE DEVELOPMENT⁴

Workforce Development/Corporate Training Services

Alvin Community College offers corporate and workforce training through Continuing Education/Workforce Development (CEWD). The CEWD delivers quality and customer-focused consulting, training, and economic development services to individuals, business, and government agencies in order to address the needs of a diverse workforce. The CEWD provides business solutions, continuous learning strategies, and vital resources.

Areas of training include:

- Advanced Mathematics
- Communication
- Computer Software Training
- Customer Service
- Emergency Medical Technician Training
- English as a Second Language
- Financial Management
- Human Resource Development
- Industrial Electrical Technology
- Industrial Trade
- Occupational Health and Safety
- Occupational Spanish
- Soldering
- Supervision
- Team Building
- Time Management
- Welding
- and much more

The CEWD offers the resources and expertise and has a proven track record of providing training programs for companies both large and small. CEWD programs have made a significant contribution to the economic well-being of many local companies. A major advantage is the flexibility offered through customized training by the day, week or month, during or after hours. Training can be handled on-site, the Pearland Campus, Alvin Campus, or at any convenient site.

Human Resource Development Services

The CEWD has enhanced its service to the community by offering comprehensive staff development services. CEWD can provide comprehensive training needs analysis, job task analysis, individualized professional development plans, skill assessments, and much more.

Training Assessment and Curriculum from:

- Achieve Global (Zinger Miller)
- ACT WorkKeys
- Command Spanish
- Education 2 Go
- HRD Systems
- Net G
- PLATO
- The Texas Leadership Institute
- Worldwide Interactive Network (WIN)
- Ziegler Training Systems
- TSTC

Corporate Partners

The following companies have selected the Center for Professional and Workforce Development as a provider for corporate and workforce training needs:

- Alvin ISD
- Alvin Manvel Chamber of Commerce
- Agrekko
- BP
- Brazoria County
- Chocolate Bayou Credit Union
- City of Alvin
- City of Pearland
- Control Company
- CPI Group, Inc.
- Dish Network
- Dow Chemical
- Dynamic Lighting
- Equistar Chemical
- Frost Bank
- Hawkins Lease Service
- Homestead Inn
- Ineos
- Input Output
- Joyce's Hallmark
- Kemlon
- Lyondell
- Packaging Services
- Pearland Chamber of Commerce
- Pearland ISD
- Pearland Neighborhood Center
- Radisson Hotel
- Rice Tec
- Schlumberger
- Solutia Inc.
- Solvents and Chemicals, Inc.
- Team Industrial Service
- Tele Flow, Inc.
- Texas Department of Criminal Justice
- The Gulf Coast Center
- Third Coast Packing
- Turbo Care
- Union Planters Bank
- Universal Weather
- Venoco

CHAPTER VII

STUDENT SERVICES

A. OFFICE OF ADMISSIONS AND ACADEMIC ADVISING⁹

The mission statement for the staff in the Office of Admissions and Academic Advising is “Serving Students to Promote Success.” Below are some statistics relating to how the Office of Admissions and Academic Advising served students in the 2013-14 academic year.

**TABLE VII-1:
ADVISING SESSIONS**

	Number of Sign-Ins		Number of Sign-Ins
Aug-12	2,981	Aug-13	2,326
Sep-12	968	Sep-13	803
Oct-12	1,228	Oct-13	1,152
Nov-12	1,573	Nov-13	1,241
Dec-12	1,105	Dec-13	838
Jan-13	2,110	Jan-14	1,517
Feb-13	844	Feb-14	651
Mar-13	803	Mar-14	701
Apr-13	1,355	Apr-14	1,027
May-13	1,315	May-14	944
Jun-13	1,006	Jun-14	1,287
Jul-13	2,177	Jul-14	1,751
Aug-13	2,592	Aug-14	2,013
Sep-13	985	Sep-14	803
Oct-13	1,388	Oct-14	1,141
Nov-13	1,411	Nov-14	1,019
Dec-13	965	Dec-14	955
TOTAL	24,806	TOTAL	20,169

COLLEGE DAY/NIGHT PROGRAMS:

2012-2013

- ACC
- Alvin ISD at Alvin High School
- Angleton High School
- Brazoswood High School
- Brazosport High School at Brazosport College
- Clear Creek ISD at Clear Falls High School
- Danbury High School
- Dickinson High School
- La Marque High School
- Manvel High School
- Pasadena ISD, La Porte ISD, Deer Park ISD at Pasadena's Convention Center
- Pearland/Friendswood Schools at Friendswood High School
- Santa Fe High School
- Texas City High School

2013-2014

- ACC
- Alvin ISD at Alvin High School
- Angleton HS, Brazoswood HS, Brazosport HS at Brazosport College
- Clear Creek ISD at Clear Falls High School
- Dickinson High School
- La Marque High School
- Pasadena ISD, La Porte ISD, Deer Park ISD at Pasadena Convention Center
- Pearland ISD and Friendswood ISD at Dawson High School
- Santa Fe High School
- Texas City High School

**TABLE VII-2:
TESTING CENTER
(Number of Tests Administered)**

Name of Test	Number of Tests Administered 2011-2012	Number of Tests Administered 2012-2013	Number of Tests Administered 2013-2014
COMPASS	3,768	5,101	0
Quick THEA	1,925	2,767	0
THEA	19	0	0
TSI Assessment	0	59	10,772
Residual ACT	1,700	1,196	0
National ACT	883	1,009	142
HESI	0	258	2,934
GED	1,754	1,289	1,235
Nursing	24	27	24
Correspondence	130	59	55
TOTAL	10,203	11,765	15,162

**TABLE VII-3:
DUAL CREDIT STUDENT ENROLLMENT**

Locations	Dual Credit Enrollment (FA 12)	Dual Credit Enrollment (SP 13)	Dual Credit Enrollment (FA 13)	Dual Credit Enrollment (SP 14)	TOTAL
Alvin High School	247	256	215	241	959
Danbury High School	33	34	27	25	119
Living Stones High School	0	12	12	15	39
Manvel High School	307	325	331	333	1,296
Pearland High School	371	349	186	173	1,079
Glenda Dawson High School	209	158	107	87	561
Turner College & Career High School	n/a	n/a	429	354	783
TOTAL	1,167	1,134	1,307	1,228	4,836

**Dual Credit Student Enrollment is unduplicated.*

Career and Job Placement Statistics

	2012-13	2013-14
Employers	1,743	1884
Contacts	2,063	2361
Jobs	744	445
Number of Employer log-ins	730	1225
Students	3,119	3463
Alumni/Graduates	487	533
Full/Part Time	2,501	2831
Pell Grant Eligible	321	412
Number of Student Log-ins	2,328	1965
Referrals	966	1183
Career Counseling	219	262
Total (contacts) services for career services	1,699	1535

B. FINANCIAL ASSISTANCE⁹

The student financial aid program at Alvin Community College aims to provide financial assistance to eligible students and to help meet college expenses. Financial aid is awarded in the form of scholarships, grants, loans, and jobs according to financial need, academic grades, and academic load.

**TABLE VII-4:
FINANCIAL ASSISTANCE AND LOAN**

Type of Assistance	2012-2013 Total Financial Assistance	2013-2014 Total Financial Assistance
PELL	\$3,319,876	\$3,094,584
SEOG	\$90,476	\$92,575
TPEG	\$221,362	\$337,460
Federal Work Study	\$85,509	\$73,470
Texas Work Study	\$11,092	\$10,736
Texas Grant	\$113,950	\$169,158
Texas Educational Opportunity Grant	\$87,924	\$100,628
Direct Subsidized	\$1,073,566	\$838,488
Direct Unsubsidized	\$345,116	\$301,683
Alternative Loans	\$191,209	\$91,531
Total	\$5,194,964.00	\$5,110,313

C. STUDENT RECORDS⁹

The Registrar's Office, supervised by the Registrar, is the custodian of student records. Below are some statistics related to the work completed in the Registrar's Office & the Enrollment Services Center during the 2012-13 and 2013-14 academic years.

Admission Applications & Pertinent Documents*

	Fall 2012	Spring 2013	TOTAL (2012-2013)	Fall 2013	Spring 2014	TOTAL (2013-2014)
HS	1,021	456	1,477	1,184	464	1,648
EA	844	116	960	835	66	901
GED	162	141	303	134	153	287
TR	1,029	947	1,976	1,135	829	1,964
IND	48	35	83	65	56	121
TOTAL	3,184	1,695	4,879	3,353	1,568	4,921

*EA = Early Admission (dual credit), GED = GED graduate, TR = Transfer admissions, IND = Individual Approval (those without HS or GED)

Processes

	Fall 2012	Spring 2013	TOTAL (2012-2013)	Fall 2013	Spring 2014	TOTAL (2013-2014)
TR Transcripts Evaluated	1,039	1,150	2,189	1,425	1,041	2,466
Official ACC Transcripts	3,216	3,664	6,880	3,263	3,351	6,614
Enrollment Verifications	34	27	61	26	17	43
Grade Changes	142	161	303	331	148	479
Graduation Applications	331	354	685	312	441	753
Auto Grads	65	140	205	94	124	218
Reverse TR Grads	0	31	31	10	28	38
TOTAL	4,827	5,496	10,323	5,461	5,150	10,611

*The NSCL began processing enrollment verification for ACC which left the ESC processing verifications for only students without a valid SSN.

**Financial Aid regulations changes went into effect which does not allow students to declare multiple programs simultaneously. ^Correction for Spring 2012

D. LIBRARY⁹

The Library provides support for all curricula offered by the college.

Library Statistics for 2013-2014

- 43 Periodical Subscriptions
- 1,136 Books Circulated
- 495 Reserves Circulated
- 77 Student Orientation Tours
- 40,119 Database logins
- 576,748 Database searches
- 514 Reference Questions
- 1,434 Students

E. UPWARD BOUND⁹

Upward Bound is a federally-funded college preparatory program for low-income students whose parents do not have a Bachelor's degree. By selecting only those students who have the potential to succeed in college, but face these demographic obstacles to their success, Upward Bound is able to actually make a difference in a student's life. All ACC Upward Bound students must be enrolled at Alvin High School. In compliance with the Department of Education requirements, ACC Upward Bound serves no more than 63 students at any given time.

- 100% of all Upward Bound participants achieved proficient level on state assessments in reading/language arts and math.
- 95% of project participants continued to participate in the project during the following school year.
- 85% of all Upward Bound graduates enrolled in a program of post-secondary education by the fall term immediately following high school graduation.
- 67% of participants who enrolled in a program of post-secondary education remained enrolled for the fall term of the second academic year.

F. OFFICE OF STUDENT ACTIVITIES⁹

The Office of Student Activities plans and implements extra-curricular activities that enrich campus life, develop well-rounded individuals, and enhance students' identification with the institution. Listed below are some of the activities for the 2014-2015 academic year.

EVENTS

- Party on the Patio Back to School Bash
- Dolphin Wing Fling
- Blue's Birthday Bash
- Constitution Day
- Drug and Alcohol Awareness Week (fall and spring)
- Club Fair
- Fall Festival
- Veteran's Week
- An Evening of Big Band
- President's Forum
- Finals Survival Study Packs
- Dolphin Dash 5K Fund Run
- Voter Registration Drive
- Annual Student Leadership Conference
- ACC Open House
- ACC Bank Fair

Student Programs and Facilities

The Office of Student Activities operates and maintains, Blue's Lagoon, a game room featuring a variety of games and activities available for student use. Blue's Lagoon features two pool tables, a ping pong table, foosball and multiple video game systems. It is open daily and may be utilized by students with a current ACC ID.

Alvin Community College has over twenty different student clubs and organizations. In addition, the Office of Student Activities offers a year-long leadership training institute called Dolphins Lead. To learn more go to www.alvincollege.edu.

CHAPTER VIII

**ALVIN COMMUNITY COLLEGE -
PEARLAND CENTER**

A. INTRODUCTION AND HISTORY¹⁰

In 1997-98, the Alvin Community College Board of Regents concluded an agreement with the Pearland Independent School District for the lease/purchase of the C.J. Harris Elementary School. The 5.2 acre site, located at 2319 North Grand Boulevard and Broadway in Pearland, was converted to create the Alvin Community College - Pearland Center.

The campus consists of eight buildings. The classrooms in Building 1 and the Library were converted first, in time for the fall 1998 opening. Subsequent renovations were made to the cafeteria and Building 3 later during the 1998-99 academic year.

In 2001, Alvin Community College – Pearland Center was awarded a one million dollar HUD Grant. Renovations were made to the Theatre, Building #5, and the Administration Building which enabled the opening of the entire center.

When the Pearland Center opened in the fall of 1998, courses were offered in both academic and technical programs, as well as in continuing education. In the summer of 2004 the University of Houston–Clear Lake and Alvin Community College began their higher education partnership by offering three classes at the Pearland Center.

In the fall of 2008, Alvin Community College entered into a partnership with the Texas State Technical College (TSTC) to offer Advanced Manufacturing/Engineering Technology Training and the Pearland Center cafeteria was renovated to become an Advanced Manufacturing Technologies training lab. Certification for Welding-Mechanical Specialist, Hydraulics-Mechanical Systems Specialist and Industrial Electrical-Programmable Logic Controls Specialist began in the spring of 2009.

The Board of Trustees voted to sell the Pearland Center in February of 2013. At that time the Board announced classes would cease after the Spring of 2013.

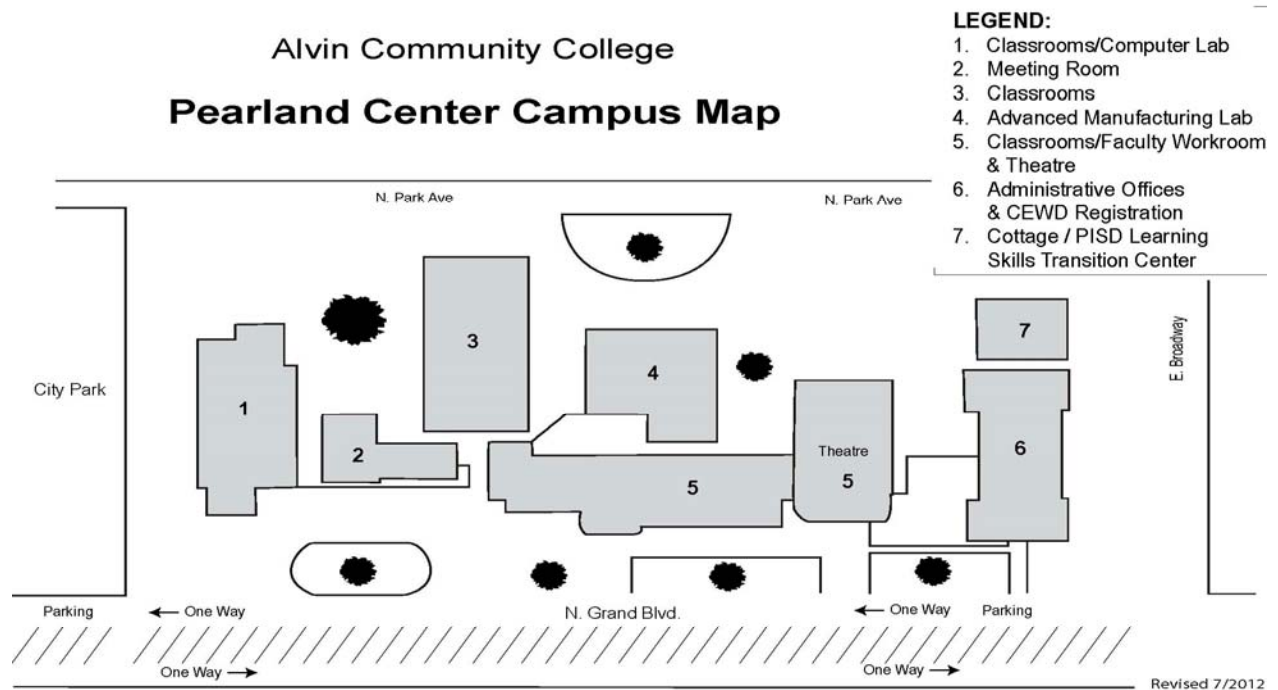
**TABLE VIII-1:
PC ANNUAL ENROLLMENT**

Fiscal Year	Credit Enrollment (PC COMBINED*)	Continuing Education Enrollment
2000-2001	777	1,107
2001-2002	805	1,389
2002-2003	834	1,008
2003-2004	619	1,356
2004-2005	457	1,222
2005-2006	335	1,625**
2006-2007	257	1,011
2007-2008	46	1,057
2008-2009	100	1,117
2009-2010	157	1,263
2010-2011	248	605
2011-2012	299	566
2012-2013	150	295

**Includes students taking classes at both PC and ACC locations*

***Includes Lunch & Learn series held at the Pearland Center Campus*

B. ALVIN COMMUNITY COLLEGE – PEARLAND CENTER SITE MAP



C. ALVIN COMMUNITY COLLEGE – PEARLAND CENTER CAMPUS BUILDINGS

**TABLE VIII-2:
ACC-PC CAMPUS BUILDINGS¹⁰**

Date of Completion	Building No.	Classrooms	Gross Square Footage	Net Assignable Space
1965	1	Classrooms	10,383	6,540
1966	2	Library	2,554	1,160
1964	3	Classrooms	10,500	6,615
1969	4	Cafeteria	7,075	4,460
1945	5	Auditorium/classroom	17,517	11,035
1937	6	Administration	6,532	4,115
1942	7	ACC-PC rental	1,496	950
1942	8	Pottery	480	400
TOTAL ALL STRUCTURES			56,537	35,725

D. PEARLAND CENTER ENROLLMENT HISTORY

**TABLE VIII-3:
PC ONLY HEADCOUNT¹¹**

(Includes students at Pearland Center, YMCA, WWW, TV locations only)

YEAR	FALL	SPRING	SUMMER	TOTAL	% CHANGE*
2001-02	201	250	154	605	-2.6%
2002-03	217	222	113	552	-8.8%
2003-04	95	67	37	199	-63.9%
2004-05	69	61	31	161	-19.1%
2005-06	49	47	17	113	-29.8%
2006-07**	50	68	18	136	+20.3%
2007-08	12	21	4	37	-72.8%
2008-09	16	32	28	76	+105.4%
2009-10	22	43	18	83	+9.2%
2010-11	32	28	31	91	+9.6%
2011-12	34	22	53	109	+19.8%
2012-13	31	28	0	59	-45.9%

*% Change is between each fiscal year.

** The increases in enrollment and contact hours are attributed to Workforce/Technical EMT classes.

**TABLE VIII-4:
PC ONLY CONTACT HOURS¹¹**

(Includes students at Pearland Center, YMCA, WWW, TV locations only)

YEAR	FALL	SPRING	SUMMER	TOTAL	% CHANGE*
2001-02	24,512	27,856	12,560	64,928	-18.3%
2002-03	28,768	26,256	10,192	65,216	+0.4%
2003-04	12,080	6,304	4,496	22,880	-64.9%
2004-05	6,912	5,456	2,480	14,848	-35.1%
2005-06	5,616	3,952	1,360	10,928	-26.4%
2006-07**	5,360	14,048	2,256	21,664	+97.3%
2007-08	2,064	5,693	944	8,701	-59.8%
2008-09	2,544	6,592	3,136	12,272	+41.0%
2009-10	3,376	5,952	992	10,320	-18.9%
2010-11	5,488	6,064	2,000	13,552	+31.3%
2011-12	3,408	1,520	3,056	7,984	-41.1%
2012-13	3,424	2,352	0	5,776	-27.7%

**% Change is between each fiscal year. ** The increases are attributed to Workforce/Technical EMT classes.*

**TABLE VIII-5:
PC COMBINED HEADCOUNT¹¹**
(Includes students taking classes at both PC and ACC locations)

YEAR	FALL	SPRING	SUMMER	TOTAL	% CHANGE*
2001-02	316	314	175	805	+3.6%
2002-03	335	348	151	834	+3.6%
2003-04	295	258	66	619	-25.8%
2004-05	196	198	63	457	-26.2%
2005-06	174	124	37	335	-26.7%
2006-07	134	106	17	257	-23.3%
2007-08	20	18	8	46	-82.1%
2008-09	29	52	19	100	+117.4%
2009-10	42	82	33	157	+57.0%
2010-11	99	90	59	248	+58.0%
2011-12	99	125	36	260	+4.8%
2012-13	98	58	0	156	-40.0%

**% Change is between each fiscal year.*

**TABLE VIII-6:
PC COMBINED CONTACT HOURS¹¹**
(Includes students taking classes at both PC and ACC locations)

YEAR	FALL	SPRING	SUMMER	TOTAL	% CHANGE*
2001-02	30,000	30,592	15,296	75,888	-4.2%
2002-03	32,624	31,104	12,256	75,984	+0.1%
2003-04	24,272	21,856	4,912	51,040	-32.8%
2004-05	16,832	17,632	6,208	40,672	-20.3%
2005-06	14,896	10,928	3,712	29,536	-27.4%
2006-07	11,616	9,008	1,872	22,496	-23.8%
2007-08	3,456	4,384	1,568	9,408	-58.2%
2008-09	2,608	7,408	1,392	11,408	+21.3%
2009-10	3,472	9,648	3,056	16,176	+41.7%
2010-11	6,832	10,848	5,280	22,960	+41.9%
2011-12	8,160	11,088	3,136	22,384	-2.5%
2012-13	6,880	5,024	0	11,904	-46.8%

*% Change is between each fiscal year.

**TABLE VIII-7:
PC TOTAL HEADCOUNT¹¹**

(Includes students taking classes at Pearland only plus the Pearland combined count)

YEAR	FALL	SPRING	SUMMER	TOTAL	% CHANGE*
2001-02	517	564	329	1,410	+0.9%
2002-03	552	570	264	1,386	-1.7%
2003-04	390	325	103	818	-41.0%
2004-05	265	259	94	618	-24.4%
2005-06	223	171	54	448	-27.5%
2006-07	184	174	35	393	-12.3%
2007-08	32	39	12	83	-78.9%
2008-09	45	84	47	176	+112.0%
2009-10	64	125	51	240	+36.4%
2010-11	131	118	90	339	+41.3
2011-12	133	147	89	369	+8.8%
2012-13	129	86	0	215	-41.7%

*% Change is between each fiscal year.

**TABLE VIII-8:
PC TOTAL CONTACT HOURS¹¹**

(Includes students taking classes at Pearland only plus the Pearland combined count)

YEAR	FALL	SPRING	SUMMER	TOTAL	% CHANGE*
2001-02	54,512	58,448	27,856	140,816	-11.2%
2002-03	61,392	57,360	22,448	141,200	+0.3%
2003-04	36,352	28,160	9,408	73,920	-47.6%
2004-05	23,744	23,088	8,688	55,520	-24.9%
2005-06	20,512	14,880	5,072	40,464	-27.1%
2006-07	16,976	23,056	4,128	44,160	+8.4%
2007-08	5,520	10,080	2,512	18,112	-59.0%
2008-09	5,152	14,000	4,528	23,680	+30.7%
2009-10	6,848	15,600	4,048	26,496	+11.9%
2010-11	12,320	16,912	7,280	36,512	+37.8%
2011-12	11,568	12,608	6,192	30,368	-16.8%
2012-13	10,304	7,376	0	17,680	-41.8%

*% Change is between each fiscal year.

**TABLE VIII-9:
FUNDED PC CONTINUING EDUCATION ENROLLMENTS¹⁰**

YEAR	QUARTER I	QUARTER II	QUARTER III	QUARTER IV	TOTAL	% CHANGE*
2002-03	160	200	99	91	550	-40.5%
2003-04	225	213	169	167	774	+40.7%
2004-05	207	145	33	65	450	-41.9%
2005-06	96	126	109	148	479	+6.4%
2006-07	165	178	123	54	520	+8.6%
2007-08	257	184	174	56	671	+29.0%
2008-09	153	274	164	128	719	+7.20%
2009-10	322	150	229	249***	950***	+32.13%
2010-11	196	97	108	66	467	-50.84%
2011-12	160	78	122	126	486	+4.07%
2012-13	64	78	45	6	193	-60.3%

*% Change is between each fiscal year. ** Data not available. ***Numbers updated by Continuing Ed.

**TABLE VIII-10:
NON-FUNDED PC CONTINUING EDUCATION ENROLLMENTS¹⁰**

YEAR	QUARTER I	QUARTER II	QUARTER III	QUARTER IV	TOTAL	% CHANGE*
2002-03	81	105	1	271	458	-16.0%
2003-04	75	159	53	295	582	+27.1%
2004-05	134	151	64	423	772	+32.6%
2005-06	192***	187	156***	611	1,146***	+48.4%
2006-07	128	42	34	287	491	-57.16%
2007-08	36	103	68	179	386	-21.4%
2008-09	117	85	70	126	398	+3.10%
2009-10	72****	86	1	154****	313****	-21.36%
2010-11	65	42	18	13	138	-55.91%
2011-12	13	36	13	18	80	-42.03%
2012-13	34	63	2	3	102	+27.5%

*% Change is between each fiscal year. ** Data not available.

*** Includes Lunch and Learn series held at Pearland Center Campus. ****Numbers updated by Continuing Ed.

**TABLE VIII-11:
TOTAL PC CONTINUING EDUCATION ENROLLMENTS¹⁰**

YEAR	QUARTER I	QUARTER II	QUARTER III	QUARTER IV	TOTAL	% CHANGE*
2002-03	241	305	100	362	1,008	-27.4%
2003-04	300	372	222	462	1,356	+34.5%
2004-05	341	296	97	488	1,222	-9.9%
2005-06	288**	313	265**	759	1,625	+33.0%
2006-07	293	220	157	341	1,011	-37.8%
2007-08	293	287	242	235	1,057	+4.5%
2008-09	270	359	234	254	1,117	+5.7%
2009-10	394***	236	230	403***	1,263***	+13.08%
2010-11	261	139	126	79	605	-52.09%
2011-12	173	114	135	144	566	-6.45%
2012-13	98	141	47	9	295	-47.9%

*% Change is between each fiscal year. ** Includes Lunch and Learn series held at Pearland Center Campus.

***Numbers updated by Continuing Ed.

**TABLE VIII-12:
FUNDED PC CONTINUING EDUCATION CONTACT HOURS¹⁰**

YEAR	QUARTER I	QUARTER II	QUARTER III	QUARTER IV	TOTAL	% CHANGE*
2002-03	7,942	8,926	2,250	4,166	23,284	-26.9%
2003-04	9,624	10,531	4,978	5,812	30,945	+32.9%
2004-05	10,387	7,578	1,171	3,258	22,394	-27.6%
2005-06	5,452	4,986	2,772	5,787	18,837	-15.9%
2006-07	3,712	7,133	2,995	1,674	15,514	-17.6%
2007-08	7,780	6,340	4,553	1,330	20,003	+28.9%
2008-09	3,782	9,313	2,803	8,317	24,215	+21.0%
2009-10	10,562	4,048***	10,587***	9,558***	34,755***	+43.53
2010-11	7,568	8,718	2,524	4,682	23,510	-32.36%
2011-12	8,938	4,864	6,278	7,626	27,706	+17.85%
2012-13	4,978	4,889	2,602	960	13,429	-51.5%

*% Change is between each fiscal year. ** Data not available. ***Numbers updated by Continuing Ed.

**TABLE VIII-13:
NON-FUNDED PC CONTINUING EDUCATION CONTACT HOURS¹⁰**

YEAR	QUARTER I	QUARTER II	QUARTER III	QUARTER IV	TOTAL	% CHANGE*
2002-03	4,470	5,770	2	5,520	15,762	-4.3%
2003-04	3,261	5,420	110	4,248	13,039	-17.3%
2004-05	4,144	4,761	120	4,006	13,031	-0.1%
2005-06	3,344	4,056	377	5,372	13,335	+2.3%
2006-07	3,815	1,464	1,364	3,386	10,029	-24.8%
2007-08	3,450	2,284	2,527	3,495	11,756	+17.3%
2008-09	3,337	2,373	2,012	556	8,278	-29.6%
2009-10	2,504	3,548	6	2,702***	8,760***	+5.82%
2010-11	2,866	2,088	1,080	46	6,080	-30.59%
2011-12	780	1,519	608	204	3,111	-48.83%
2012-13	895	2,574	6	9	3,484	+12.0%

*% Change is between each fiscal year. ** Data not available. ***Numbers updated by Continuing Ed.

**TABLE VIII-14:
TOTAL PC CONTINUING EDUCATION CONTACT HOURS¹⁰**

YEAR	QUARTER I	QUARTER II	QUARTER III	QUARTER IV	TOTAL	% CHANGE*
2002-03	12,412	14,696	2,252	9,686	39,046	-19.2%
2003-04	12,885	15,951	5,088	10,060	43,984	+12.6%
2004-05	14,531	12,339	1,291	7,264	35,425	-19.5%
2005-06	8,796	9,042	3,194***	11,159	32,172***	-9.2%
2006-07	7,527	8,597	4,359	5,060	25,543	-20.6%
2007-08	11,230	8,624	7,080	4,825	31,759	+24.3%
2008-09	7,719	11,686	4,815	8,873	32,493	+2.3%
2009-10	13,066	7,596****	10,593****	12,260****	43,515****	+33.92%
2010-11	10,452	10,806	3,604	4,728	29,590	-32.00%
2011-12	9,718	6,383	6,886	7,830	30,817	+4.15%
2012-13	5,873	7,463	2,608	969	16,913	-45.1%

* % Change is between each fiscal year. ** Data not available.

*** Includes Lunch and Learn series held at Pearland Center Campus. ****Numbers updated by Continuing Ed.

CHAPTER IX

PERSONNEL

A. EEO POLICY STATEMENT⁸

Alvin Community College is an equal opportunity institution and does not discriminate against anyone on the basis of race, religion, color, sex, disability, age, or national origin.

B. DEMOGRAPHICS OF FACULTY AND STAFF, 2013-2014⁸

**TABLE IX-1:
AGE DISTRIBUTION OF FACULTY AND STAFF**

	Full-Time Administrative Staff		Full-Time Professional Staff		Full-Time Faculty		Full-Time Technical Support, Clerical & Maintenance Staff		Total	Total Percentage
25 & Under	0	0%	0	0%	0	0%	1	1%	1	0%
26-30	0	0%	1	2%	2	2%	7	7%	10	4%
31-35	1	9%	7	13%	2	2%	8	8%	18	6%
36-40	0	0%	7	13%	13	12%	9	8%	29	10%
41-45	1	9%	3	5%	13	12%	8	8%	25	9%
46-50	2	18%	10	18%	11	18%	15	14%	38	13%
51-55	1	9%	8	14%	15	20%	22	21%	46	16%
56-60	1	9%	10	18%	19	17%	18	17%	48	17%
61-65	3	27%	7	13%	12	10%	8	8%	30	11%
66 & Over	2	18%	3	5%	23	21%	10	9%	38	13%
Total	11	100%	56	100%	110	100%	106	100%	283	100%

**TABLE IX-2:
GENDER DISTRIBUTION OF FACULTY AND STAFF**

	Full-Time Administrative Staff		Full-Time Professional Staff		Full-Time Faculty		Full-Time Technical Support, Clerical & Maintenance Staff		Total	Total Percentage
Male	6	55%	21	38%	46	42%	24	23%	97	34%
Female	5	45%	35	63%	64	58%	82	77%	186	66%
Total	11	100%	56	100%	110	100%	106	100%	283	100%

**TABLE IX-3:
RACIAL/ETHNIC DISTRIBUTION OF FACULTY/STAFF**

	Full-Time Administrative Staff		Full-Time Professional Staff		Full-Time Faculty		Full-Time Technical Support, Clerical & Maintenance Staff		Total
White, Non- Hispanic	9	90%	41	73%	96	87%	63	59%	209
Hispanic	1	10%	7	13%	9	8%	36	34%	53
Black	0	0%	6	11%	3	3%	4	3%	13
Other	0	0%	2	4%	2	2%	3	3%	7
Total	10	100%	56	100%	110	100%	106	100%	282

**TABLE IX-4:
QUALIFICATIONS OF FACULTY**

	Percent of Full-Time Technical Faculty Who Have Earned:	Percent of Full-Time Academic Programs Faculty Who Have Earned:
Less than Baccalaureate Degree	26%	0%
Baccalaureate Degree	26%	5%
Master's Degree	40%	65%
Doctorate	8%	30%

**TABLE IX-5:
EXPERIENCE OF FACULTY**

Average Number of Years at ACC for Full-Time Technical Programs Faculty	13 years
Average Number of Years at ACC for Full-Time Academic Programs Faculty	17 years

CHAPTER X

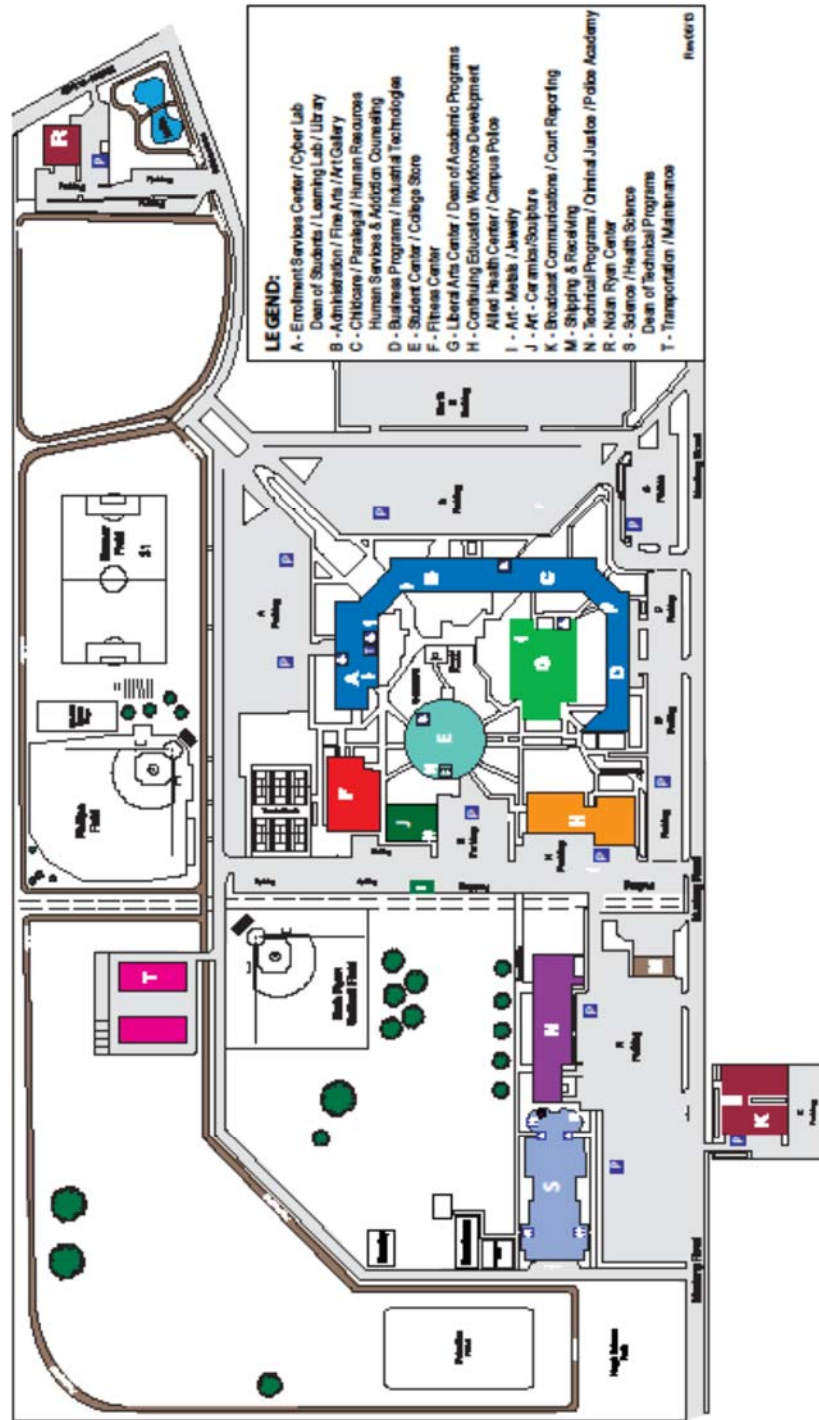
FACILITIES AND PHYSICAL PLANT

A. Alvin Community College Campus Map



ALVIN COMMUNITY COLLEGE

CAMPUS MAP



B. ALVIN COMMUNITY COLLEGE CAMPUS BUILDINGS

**TABLE X-1:
ACC CAMPUS BUILDINGS⁵**

Date of Completion	Building	Gross Square Footage	Net Assignable Space
Classroom Office Buildings			
1977	Building A, B, C, & D - Megastructure	168,901	106,758
1963	Building G - Liberal Arts Center	35,100	23,660
1963	Building H - Natural Science Center	21,034	13,510
2008	Building J – Art Dept Sculpture/Ceramics	5,000	4,800
1982*	Building K - Court Reporting/KACC	21,620	19,960
1984	Building N - Occupational/Technical	36,881	18,353
1996	Building R - Nolan Ryan Center	12,083	8,583
2007	Building S – Science/Health Science	98,790	59,178
Other Structures			
1987	Athletic Concession Stand - Boys Baseball	579	324
1998	Athletic Concession Stand - Girls Softball	850	275
2010	Baseball Field House	1,428	1,428
1963	Building E - Student Center	19,160	14,875
1977	Building F - Gymnasium/Fitness Center	21,882	19,064
1963**	Building I - Art Department	1,120	901
1980	Building M - Shipping/Receiving	7,041	6,491
1994	Building T - Transportation Maintenance	11,000	11,000
2009	General Storage Building – T	342	342
2010	Greenhouse	1,800	1,800
2013	Greenhouse Storage Building	400	320
2010	Observatory	200	200
Total All Structures		465,211	311,822

*Renovated for academic use in 1992.

**Renovated in 1999

C. PARKING LOTS AND PLAYING FIELDS

**TABLE X-2: Parking Spaces
PARKING LOTS⁵**

Parking Lots	Student Spaces	Staff Spaces	Handicap Spaces	Total
A Lot	226	58	5	289
B Lot	317	122	5	444
B Lot, North	341	0	0	341
C Lot	100	0	1	101
D Lot	133	53	2	188
D Lot, Motorcycle Pad	6	0	0	6
E Lot	82	19	5	106
E Lot, Motorcycle Pad	7	0	0	7
H Lot	113	5	0	118
I Lot	9	3	1	13
J Lot (Art Building)	15	0	1	16
K Lot	86	15	2	103
K Lot, Motorcycle Pad	2	0	0	2
N Lot	192	17	2	211
N Lot, Motorcycle Pad	2	0	0	2
R Lot	121	0	4	125
S Lot	110	34	6	150
Softball Lot	72	0	0	72
T Lot	2	6	1	9
TOTAL	1,936	332	35	2,303

1. Athletic Fields

Baseball Field - Completed Spring 1978

Soccer/Football Field - Completed Spring 1978

Softball Field - Completed Spring 1993

1 acre of land is leased to the City of Alvin for recreational use.

2. Roadways and Jogging Track

Approximately 26,800 feet (5.08 miles) of two-lane roadway (24' width) and a 2-mile, paved jogging track.

D. VALUE OF BUILDINGS AND CONTENTS

**TABLE X-3:
VALUE OF BUILDINGS AND CONTENTS⁵**

BUILDING		STRUCTURE	CONTENTS	TOTAL
Classrooms/Offices	Buildings A, B, C, & D - Megastructure	22,359,980	4,809,463	27,169,443
	Building G – Liberal Arts Center	4,915,680	600,415	5,516,095
	Building H – Natural Science Center	3,043,600	880,470	3,924,070
	Building J – Art Dept Sculpture/Ceramics	605,479	50,700	656,179
	Building K – Court Reporting/KACC	3,030,580	876,704	3,907,284
	Building N – Occupational/Technical	4,737,180	1,004,959	5,742,139
	Building S – Science/Health Science	15,000,000	1,700,000	16,700,000
Other Structures	Building E – Student Center	2,185,000	243,675	2,428,675
	Building F – Gymnasium/Fitness Center	3,383,640	388,516	3,772,156
	Building I – Art Dept Sculpture/Ceramics	131,520	12,577	144,097
	Building M – Shipping/Receiving	733,500	106,624	840,124
	Building T – Transportation/Maintenance	512,465	65,113	577,578
	Building T – Vehicles	358,875	176,175	535,050
	General Storage Building – T	46,800	0	46,800
	KACC Radio Station Storage Building	0	65,123	65,123
	Tower Building/Broadcasting Equipment	170,000	20,000	190,000
	Athletic Concession Stands	135,835	35,000	170,835
	Baseball Field House	1,799,400	161,946	1,961,346
	Building R - Nolan Ryan Center	267,806	495,000	762,806
	Alvin Community College - Pearland Center*	22,359,980	4,809,463	27,169,443
	TOTAL ALL STRUCTURES	\$85,777,320	\$16,501,923	\$102,279,243

*Renovation costs only

E. PROJECTS COMPLETED

List of Projects Completed by Physical Plant (2013-2014)

- Installation of new lighting for childcare area. All fluorescent lighting was replaced due to deterioration of lens on fixtures
- Installation of new door passage between Bookstore and the Texas room
- Removal of door in hallway of E building (This unit was used in the installation of the new door passage in Bookstore.)
- Installation of student game room in the Texas Room
- Installed new circuit to run new radial arm saw for Theater shop area
- Installed several ADA door openers throughout campus to meet ADA requirements
- Installed PTEC skid package, new concrete, and fencing
- Replaced concrete in front of N building and new sidewalk in front of M building
- Replaced washing machine in Baseball Fieldhouse
- C227 carpet installed
- C227 remodeled area for new Texas room
- Installed new water heater for Nolan Ryan
- Installed LED lighting for Nolan Ryan

CHAPTER XI

FINANCES

A. 2013 BUDGET OVERVIEW⁶

**TABLE XI-1:
BUDGET BY AREA**

AREA	AMOUNT	TOTAL	PERCENT
Instruction		\$13,622,236	49.76%
Technical Programs	\$6,530,406		
Academic Programs	\$6,882,610		
Pearland College Center	\$209,220		
General Expense		\$8,040,559	29.37%
Governance	\$14,625		
Institutional Administration	\$288,247		
Financial Affairs/Administrative Services	\$2,774,314		
General Institutional Expense	\$2198,472		
Personnel Benefits	\$3,002,089		
Development/Marketing	\$1,030,776		
Human Resources	\$250,502		
Institutional Security	\$336,104		
Institutional Effectiveness & Research	\$175,430		
Student & Instructional Services		\$2,325,149	8.49%
Physical Plant Operation & Maintenance		\$3,388,854	12.38%
TOTAL		\$25,899,697	100.00%

B. LOCAL TAX BASE

TABLE XI-2:

ASSESSED VALUE OF ACC DISTRICT TAX BASE²

Fiscal Year	<i>(Amounts expressed in thousands)</i>			Ratio of Taxable Assessed Value to Assessed Value	<i>(Direct Rate)</i>		
	Assessed Valuation of Property	Less: Exemptions	Taxable Assessed Value (TAV)		Maintenance & Operations	Debt Service	Total
2000-01	2,801,866	431,256	2,370,610	84.61%	0.2389	0	0.2389
2001-02	3,090,946	493,718	2,597,228	84.03%	0.2411	0	0.2411
2002-03	3,152,192	592,291	2,559,901	81.21%	0.2553	0	0.2553
2003-04	3,281,498	537,287	2,744,211	83.63%	0.254766	0	0.254766
2004-05	3,775,034	627,574	3,147,460	83.38%	0.240561	0	0.240561
2005-06	4,433,472	654,631	3,778,841	85.23%	0.208306	0.029249	0.237555
2006-07	5,164,489	950,970	4,213,519	81.59%	0.193221	0.0263	0.219521
2007-08	6,020,738	1,045,752	4,974,986	82.63%	0.186741	0.023539	0.21028
2008-09	6,728,205	916,132	5,812,073	86.38%	0.177329	0.022503	0.199832
2009-10	6,905,533	1,044,338	5,861,195	84.88%	0.176312	.023518	0.199830
2010-11	6,898,889	1,187,556	5,711,333	82.79%	0.174867	0.024963	0.199830
2011-12	6,526,053	637,123	5,888,930	90.24%	0.173798	0.025687	0.199485
2012-13	6,657,772	598,528	6,059,244	91.01%	0.175119	0.024637	0.199756
2013-14	7,072,385	566,309	6,506,076	91.99%	0.176540	0.023216	0.199756

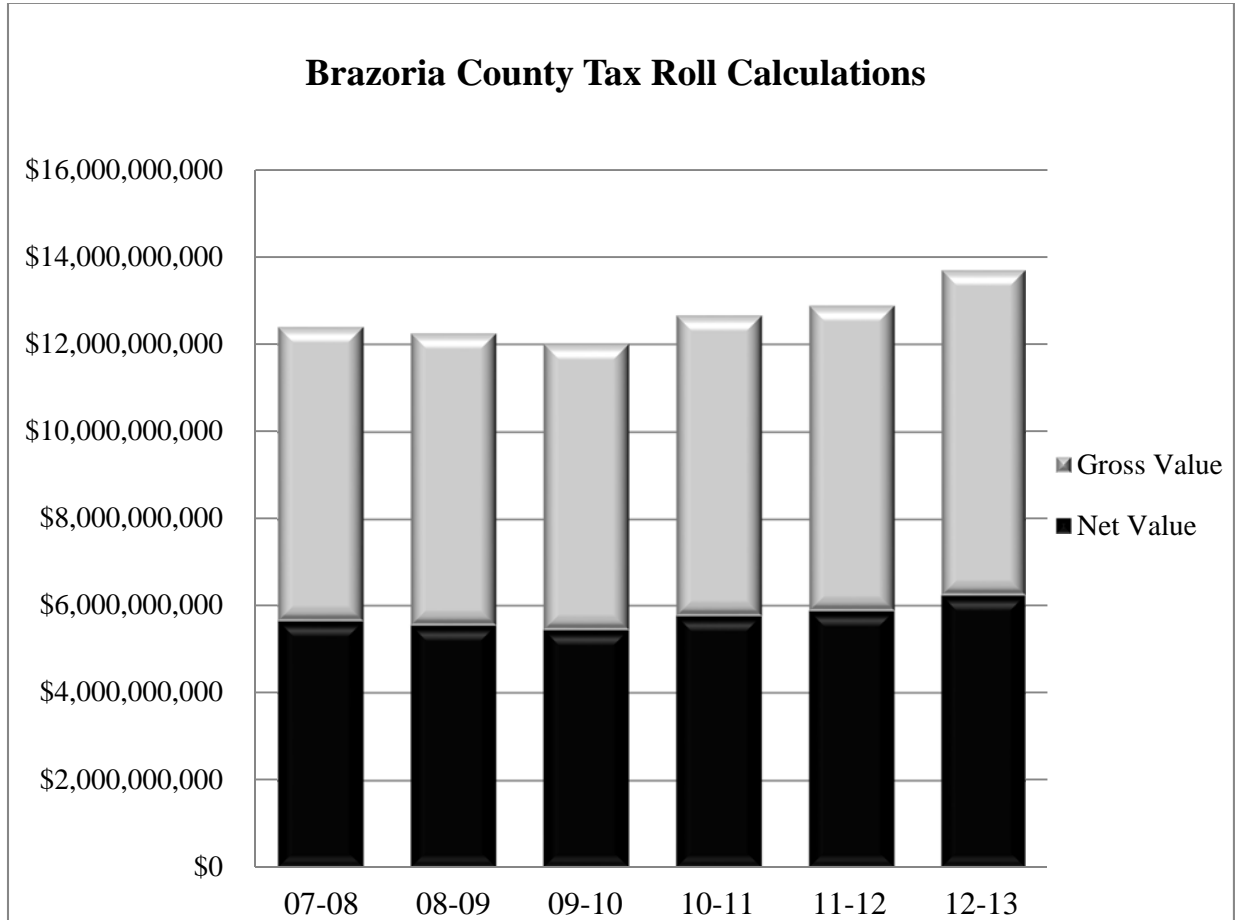
Source: Annual Financial Report SS-5

C. BRAZORIA COUNTY TAX OFFICE, TAX ROLL CALCULATIONS FOR ACC⁶

	2007-08	2008-09	2009-10	2010-11	2011-12	2012-13	2013-2014
TAX VALUES							
Land	\$1,658,061,014	\$1,716,925,947	\$1,704,022,127	\$1,759,673,975	\$1,743,102,871	\$1,817,326,039	\$1,918,971,945
Improvements	\$4,135,342,477	\$4,078,289,261	\$4,009,566,589	\$4,219,457,970	\$4,284,719,076	\$4,438,264,866	\$4,976,043,447
Personal	\$736,073,410	\$675,717,750	\$638,507,820	\$711,332,864	\$744,157,425	\$809,557,880	\$855,363,010
Minerals	\$223,997,357	\$237,937,022	\$214,545,775	\$208,424,567	\$236,792,476	\$398,398,586	\$398,398,586
Total Gross Value	\$6,753,474,258	\$6,708,869,980	\$6,566,642,311	\$6,898,889,376	\$7,008,771,848	\$7,463,547,371	\$8,206,477,455
TAX EXEMPTIONS							
Totally Exempt	\$314,081,568	\$378,022,521	\$379,664,070	\$388,229,230	\$390,008,555	\$426,615,308	\$454,889,053
Ag Exemptions	\$360,164,261	\$379,541,683	\$350,077,427	\$366,701,598	\$346,450,725	\$385,757,879	\$400,809,444
Disabled Persons	\$36,909,326	\$37,562,960	\$36,498,902	\$37,234,193	\$38,902,690	\$38,791,599	\$38,328,582
Over 65	\$210,459,152	\$218,608,357	\$233,941,641	\$243,979,244	\$253,878,337	\$269,999,405	\$290,849,792
Disabled Veterans	\$3,927,890	\$4,280,740	\$17,408,589	\$20,854,307	\$25,163,600	\$29,018,004	\$35,988,758
Other	\$186,896,474	\$149,200,720	\$110,159,935	\$83,081,233	\$81,456,732	\$80,195,681	\$72,271,040
Total Exemptions	\$1,112,438,671	\$1,167,216,981	\$1,127,570,564	\$1,140,079,805	\$1,135,860,639	\$1,230,377,876	\$1,293,136,669
NET VALUE	\$5,641,035,587	\$5,541,652,999	\$5,438,891,737	\$5,758,809,571	\$5,872,911,209	\$6,233,169,495	\$6,884,398,610
TAX LEVY							
Tax Rate	\$0.1998	0.1998	\$0.199830	0.199830	0.199485	0.199756	0.199756
Net Value x Rate	\$11,272,594.23	\$11,073,996.02	\$10,868,537	\$11,507,829	\$11,715,577	\$12,451,130	\$13,751,999
Tax Roll	\$11,272,594.23	\$11,073,996.02	\$10,868,537	\$11,507,829	\$11,715,577	\$12,451,130	\$13,751,999
Difference	\$ -	\$ -	\$ -	\$ -	\$ -	\$ -	\$ -

TABLE XI-3:

**Figure XI-1:
Brazoria County Tax Roll Calculations**



D. REVENUES FROM STATE

**TABLE XI-4:
COMPARISON OF STATE REVENUE TO EXPENDITURES²
(In Thousands)**

Fiscal Year	Education & General Expenditures	State Revenue	State Revenue as a % of Expenditures
1992-93	15,487.3	9,099.0	58.8%
1993-94	16,325.5	9,674.6	59.3%
1994-95	15,485.4	9,693.6	62.6%
1995-96	15,337.3	9,009.9	58.7%
1996-97	16,186.1	9,029.2	55.8%
1997-98	17,720.7	9,395.8	53.0%
1998-99	16,808.0	9,706.9	57.8%
1999-00	18,158.5	9,510.8	52.4%
2000-01	19,517.7	9,713.8	49.8%
2001-02	20,136.0	10,355.0	51.4%
2002-03	20,378.1	9,898.3	48.6%
2003-04	20,917.3	10,001.5	47.8%
2004-05	22,153.4	10,127.9	45.7%
2005-06	23,600.7	10,341.9	43.8%
2006-07	26,851.2	10,352.7	38.6%
2007-08	28,085.9	10,903.7	38.8%
2008-09	30,516.0	10,995.7	36.0%
2009-10	32,120.6	10,438.0	33.0%
2010-11	31,440.3	10,323.0	32.9%
2011-12	30,207.9	9,128.0	30.2%
2012-13	30,174.7	8,360.0	27.7%
2013-14	32,825.1	9,208.0	28.1%

Source: Audit Exhibit 2 and SS-2 (Scholarships, Auxiliary, and Depreciation are excluded.)

Note: State Revenue includes Fringe Benefits paid by the State.

E. REVENUES FROM TUITION AND FEES

**TABLE XI-5:
COMPARISON OF TUITION & FEES TO EXPENDITURES²
(In Thousands)**

Fiscal Year	Education & General Expenditures	Tuition/Fees Revenue	Tuition/Fees as a % of Expenditures
1992-93	15,487.3	2,320.1	15.00%
1993-94	16,325.5	2,141.0	13.10%
1994-95	15,485.4	2,604.4	16.80%
1995-96	15,337.3	2,593.3	16.90%
1996-97	16,186.1	2,715.7	16.80%
1997-98	17,720.7	3,192.7	18.00%
1998-99	16,808.0	3,427.4	20.40%
1999-00	18,158.5	3,721.5	20.50%
2000-01	19,517.1	3,867.6	19.80%
2001-02	20,136.0	3,857.0	19.20%
2002-03	20,378.1	4,823.9	23.70%
2003-04	20,917.3	5,850.6	28.00%
2004-05	22,153.4	5,654.0	25.50%
2005-06	23,600.7	5,782.5	24.50%
2006-07	26,851.2	6,010.2	22.40%
2007-08	28,085.9	7,006.6	24.90%
2008-09	30,516.0	7,802.5	25.57%
2009-10	32,120.6	9,499.6	29.57%
2010-11	31,440.3	10,703.1	34.00%
2011-12	30,207.9	11,270.2	37.31%
2012-13	30,174.7	10,718.8	35.52%
2013-14	32,825.1	12,126.2	36.94%

Source: Audit Schedule A (All tuition plus fees, except student service fees)

F. GRANTS AND CONTRACTS

**TABLE XI-6:
TOTAL AMOUNT ANTICIPATED⁶**

School Year	Total
1990-91	\$1,341,241
1991-92	\$1,155,471
1992-93	\$1,178,640
1993-94	\$1,389,035
1994-95	\$1,750,471
1995-96	\$1,712,346
1996-97	\$1,915,731
1997-98	\$1,679,106
1998-99	\$1,775,384
1999-00	\$1,415,208
2000-01	\$1,348,158
2001-02	\$1,334,096

School Year	Total
2002-03	\$2,079,009
2003-04	\$3,302,590
2004-05	\$3,140,787
2005-06	\$3,130,705
2006-07	\$3,672,692
2007-08	\$3,202,018
2008-09	\$5,965,726
2009-10	\$2,787,709
2010-11	\$3,898,472
2011-12	\$4,709,871
2012-13	\$4,767,924
2013-14	\$5,212,649

**TABLE XI-7:
FEDERAL, STATE, AND PRIVATE GRANTS⁶
(Grants Awarded 2013-14)**

GRANT	AMOUNT AWARDED
Community Education	
. Department of Education-Upward Bound	\$262,500
. Brazoria County Community Development Block Grant	\$10,000
.TWC Skills Development	\$1,990,878
.THECB Accelerate Texas	\$25,415
.Wagner Peyser Fund	\$80,000
.THECB Self Sufficiency	\$100,000
.ACC Foundation	\$11,500
Instructional & Support Services	
. Carl Perkins Grant	\$108,191
. Substance Abuse Counselor Training Grant	\$20,000
.PTAC Lyondell Based Grant	\$1,000
.PTAC Shell Grant	\$5,000
Student Financial Aid	
. College Work Study (CWSP)	\$85,519
. Pell Grant	\$4,000,000
. Supplemental Educational Opportunity Grant (SEOG)	\$95,000
. Texas Educational Opportunity Grant (TEOG)	\$64,262
. Texas Work Study Program (TWSP)	\$8,318
. Texas Grant	\$107,325
TOTAL	\$6,974,908

SOURCES

¹Alvin Community College Administrative Procedures Manual

²Alvin Community College Annual Financial Report

³Alvin Community College Strategic Plan

⁴Alvin Community College Department of Continuing Education

⁵Alvin Community College Financial and Administrative Services

⁶Alvin Community College Fiscal Analysis and Budget

⁷Alvin Community College Foundation

⁸Alvin Community College Office of Human Resources

⁹Alvin Community College Office of Student Services

¹⁰Alvin Community College – Pearland Center

¹¹Alvin Community College Registrar’s Office

¹²Alteryx (<http://www.alteryx.com>)

¹³Texas Education Agency (<http://www.tea.state.tx.us>)

¹⁴THECB Educational Data Center (<http://www.thecb.state.tx.us>)

¹⁵THECB Prep (<http://www.txhighereddata.org/Interactive/PREP>)

¹⁶Texas Association of Community Colleges (<http://www.tacc.org>)

APPENDIX

A. Fall 2014 Quick Reference Guide

Headcount **4,914**

Contact Hours **855,440**

Demographics

➤ **Average Age** **23**

➤ **Gender** **56% Female**
 44% Male

➤ **Race/Ethnicity** **51% White**
 30% Hispanic
 11% Black
 8% Other

B. Texas Community College Tax and Contact Hour Information 2013-14

Sorted By:					
Order	College	Valuation	Tax Rate	FY 2015 Levy*	2013-2014 Contact Hours
1	Alamo	111,637,768,682	0.14915	166,507,732	20,138,720
2	Alvin	7,131,404,693	0.204009	14,548,707	2,166,256
3	Amarillo*	11,207,890,892	0.2575	18,679,236	4,068,464
4	Angelina	3,988,930,747	0.1719	6,856,972	2,054,459
5	Austin	139,307,147,930	0.0942	131,227,333	14,279,182
6	Blinn	2,450,847,336	0.0584	1,431,295	7,408,544
7	Brazosport	6,617,807,882	0.280878	18,587,966	1,542,944
8	Central Texas	8,456,204,362	0.1366	11,551,175	5,429,674
9	Cisco	618,990,210	0.11357	702,987	1,518,296
10	Clarendon*	212,974,226	0.2708	470,247	644,608
11	Coastal Bend	1,256,194,659	0.17738	2,228,238	1,579,104
12	College of the Mainland	9,587,628,660	0.205085	19,662,788	1,626,644
13	Collin	86,977,686,228	0.08196	71,286,912	9,946,544
14	Dallas	182,822,509,060	0.124775	228,116,786	27,367,114
15	Del Mar	21,620,447,339	0.248073	53,634,492	4,238,464
16	El Paso	38,140,477,339	0.128122	48,866,342	10,591,456
17	Frank Phillips*	678,595,280	0.24767	1,492,910	511,556
18	Galveston	5,765,752,334	0.187	10,781,957	949,163
19	Grayson	7,775,186,447	0.1815	14,111,963	2,175,776
20	Hill*	1,647,552,290	0.139479	1,474,213	2,069,232
21	Houston	160,632,113,433	0.10689	171,699,666	22,337,452
22	Howard	4,037,159,758	0.17662	7,130,432	1,329,560
23	Kilgore	4,071,580,141	0.154	6,270,233	2,642,042
24	Laredo	11,359,617,483	0.297163	33,756,580	3,164,752
25	Lee	8,887,714,104	0.2607	23,170,271	2,709,760
26	Lone Star	142,930,000,000	0.1081	154,507,330	24,804,192
27	McLennan	13,527,366,945	0.14953	20,227,472	3,647,704
28	Midland*	20,273,138,118	0.15239	25,217,757	2,083,492
29	Navarro	2,917,537,473	0.1202	3,506,880	4,769,392
30	North Central Texas*	3,390,000,321	0.1595	3,712,050	3,592,366
31	Northeast Texas	4,171,930,040	0.0995	4,151,070	1,398,808
32	Odessa	14,692,815,869	0.1766	25,947,513	1,886,835
33	Panola	4,477,690,828	0.21483	9,619,423	1,253,552
34	Paris	1,574,086,224	0.1866	2,937,245	2,553,350
35	Ranger	109,317,710	0.247765	270,851	910,004
36	San Jacinto	42,937,007,385	0.185602	79,691,944	12,064,848
37	South Plains	4,729,377,055	0.26532	12,547,983	4,088,464
38	South Texas	30,919,771,514	0.185	57,201,577	11,350,192
39	Southwest Texas	2,130,073,482	0.13	2,769,096	1,979,024
40	Tarrant	133,754,637,419	0.1495	199,963,183	18,599,915
41	Temple*	4,216,460,980	0.256284	8,706,992	2,303,748
42	Texarkana	5,115,728,940	0.105267	5,385,174	1,874,816
43	Texas Southmost	11,196,866,552	0.164094	18,373,386	8,960,544
44	Trinity Valley*	7,990,659,554	0.1536	8,278,323	3,109,452
45	Tyler	9,947,148,441	0.199926	19,886,936	4,951,336
46	Vernon	1,205,268,590	0.217669	2,623,496	1,261,984
47	Victoria	6,391,705,829	0.1875	11,984,448	1,626,928
48	Weatherford*	9,793,881,698	0.160788	11,227,706	2,276,466
49	Western Texas	3,700,014,908	0.2457	9,090,937	901,032
50	Wharton	4,053,273,698	0.12656	5,129,823	2,714,792

*Indicates a Maintenance Tax District. In the case of a tax rate range in these areas the high point was used.

		Sorted By:			
Order	College	Valuation	Tax Rate	FY 2015 Levy*	2013-2014 Contact Hours
1	Dallas	182,822,509,060	0.124775	228,116,786	27,367,114
2	Houston	160,632,113,433	0.10689	171,699,666	22,337,452
3	Lone Star	142,930,000,000	0.1081	154,507,330	24,804,192
4	Austin	139,307,147,930	0.0942	131,227,333	14,279,182
5	Tarrant	133,754,637,419	0.1495	199,963,183	18,599,915
6	Alamo	111,637,768,682	0.14915	166,507,732	20,138,720
7	Collin	86,977,686,228	0.08196	71,286,912	9,946,544
8	San Jacinto	42,937,007,385	0.185602	79,691,944	12,064,848
9	El Paso	38,140,477,339	0.128122	48,866,342	10,591,456
10	South Texas	30,919,771,514	0.185	57,201,577	11,350,192
11	Del Mar	21,620,447,339	0.248073	53,634,492	4,238,464
12	Midland*	20,273,138,118	0.22799	25,217,757	2,083,492
13	Odessa	14,692,815,869	0.1766	25,947,513	1,886,835
14	McLennan	13,527,366,945	0.14953	20,227,472	3,647,704
15	Laredo	11,359,617,483	0.297163	33,756,580	3,164,752
16	Amarillo*	11,207,890,892	0.4682	18,679,236	4,068,464
17	Texas Southmost	11,196,866,552	0.164094	18,373,386	8,960,544
18	Tyler	9,947,148,441	0.199926	19,886,936	4,951,336
19	Weatherford*	9,793,881,698	0.278734	11,227,706	2,276,466
20	College of the Mainland	9,587,628,660	0.205085	19,662,788	1,626,644
21	Lee	8,887,714,104	0.2607	23,170,271	2,709,760
22	Central Texas	8,456,204,362	0.1366	11,551,175	5,429,674
23	Trinity Valley*	7,990,659,554	0.2576	8,278,323	3,109,452
24	Grayson	7,775,186,447	0.1815	14,111,963	2,175,776
25	Alvin	7,131,404,693	0.204009	14,548,707	2,166,256
26	Brazosport	6,617,807,882	0.280878	18,587,966	1,542,944
27	Victoria	6,391,705,829	0.1875	11,984,448	1,626,928
28	Galveston	5,765,752,334	0.187	10,781,957	949,163
29	Texarkana	5,115,728,940	0.105267	5,385,174	1,874,816
30	South Plains	4,729,377,055	0.26532	12,547,983	4,088,464
31	Panola	4,477,690,828	0.21483	9,619,423	1,253,552
32	Temple*	4,216,460,980	0.414	8,706,992	2,303,748
33	Northeast Texas	4,171,930,040	0.0995	4,151,070	1,398,808
34	Kilgore	4,071,580,141	0.154	6,270,233	2,642,042
35	Wharton	4,053,273,698	0.12656	5,129,823	2,714,792
36	Howard	4,037,159,758	0.17662	7,130,432	1,329,560
37	Angelina	3,988,930,747	0.1719	6,856,972	2,054,459
38	Western Texas	3,700,014,908	0.2457	9,090,937	901,032
39	North Central Texas*	3,390,000,321	0.22414	3,712,050	3,592,366
40	Navarro	2,917,537,473	0.1202	3,506,880	4,769,392
41	Blinn	2,450,847,336	0.0584	1,431,295	7,408,544
42	Southwest Texas	2,130,073,482	0.13	2,769,096	1,979,024
43	Hill*	1,647,552,290	0.238629	1,474,213	2,069,232
44	Paris	1,574,086,224	0.1866	2,937,245	2,553,350
45	Coastal Bend	1,256,194,659	0.17738	2,228,238	1,579,104
46	Vernon	1,205,268,590	0.217669	2,623,496	1,261,984
47	Frank Phillips*	678,595,280	0.467765	1,492,910	511,556
48	Cisco	618,990,210	0.11357	702,987	1,518,296
49	Clarendon*	212,974,226	0.501678	470,247	644,608
50	Ranger	109,317,710	0.247765	270,851	910,004

*Indicates a Maintenance Tax District. In the case of a tax rate range in these areas the average was used.

			Sorted By:		
Order	College	Valuation	Tax Rate	FY 2015 Levy*	2013-2014 Contact Hours
1	Laredo	11,359,617,483	0.297163	33,756,580	3,164,752
2	Brazosport	6,617,807,882	0.280878	18,587,966	1,542,944
3	Clarendon*	212,974,226	0.2708	470,247	644,608
4	South Plains	4,729,377,055	0.26532	12,547,983	4,088,464
5	Lee	8,887,714,104	0.2607	23,170,271	2,709,760
6	Amarillo*	11,207,890,892	0.2575	18,679,236	4,068,464
7	Temple*	4,216,460,980	0.256284	8,706,992	2,303,748
8	Del Mar	21,620,447,339	0.248073	53,634,492	4,238,464
9	Ranger	109,317,710	0.247765	270,851	910,004
10	Frank Phillips*	678,595,280	0.24767	1,492,910	511,556
11	Western Texas	3,700,014,908	0.2457	9,090,937	901,032
12	Vernon	1,205,268,590	0.217669	2,623,496	1,261,984
13	Panola	4,477,690,828	0.21483	9,619,423	1,253,552
14	College of the Mainland	9,587,628,660	0.205085	19,662,788	1,626,644
15	Alvin	7,131,404,693	0.204009	14,548,707	2,166,256
16	Tyler	9,947,148,441	0.199926	19,886,936	4,951,336
17	Victoria	6,391,705,829	0.1875	11,984,448	1,626,928
18	Galveston	5,765,752,334	0.187	10,781,957	949,163
19	Paris	1,574,086,224	0.1866	2,937,245	2,553,350
20	San Jacinto	42,937,007,385	0.185602	79,691,944	12,064,848
21	South Texas	30,919,771,514	0.185	57,201,577	11,350,192
22	Grayson	7,775,186,447	0.1815	14,111,963	2,175,776
23	Coastal Bend	1,256,194,659	0.17738	2,228,238	1,579,104
24	Howard	4,037,159,758	0.17662	7,130,432	1,329,560
25	Odessa	14,692,815,869	0.1766	25,947,513	1,886,835
26	Angelina	3,988,930,747	0.1719	6,856,972	2,054,459
27	Texas Southmost	11,196,866,552	0.164094	18,373,386	8,960,544
28	Weatherford*	9,793,881,698	0.160788	11,227,706	2,276,466
29	North Central Texas*	3,390,000,321	0.1595	3,712,050	3,592,366
30	Kilgore	4,071,580,141	0.154	6,270,233	2,642,042
31	Trinity Valley*	7,990,659,554	0.1536	8,278,323	3,109,452
32	Midland*	20,273,138,118	0.15239	25,217,757	2,083,492
33	McLennan	13,527,366,945	0.14953	20,227,472	3,647,704
34	Tarrant	133,754,637,419	0.1495	199,963,183	18,599,915
35	Alamo	111,637,768,682	0.14915	166,507,732	20,138,720
36	Hill*	1,647,552,290	0.139479	1,474,213	2,069,232
37	Central Texas	8,456,204,362	0.1366	11,551,175	5,429,674
38	Southwest Texas	2,130,073,482	0.13	2,769,096	1,979,024
39	El Paso	38,140,477,339	0.128122	48,866,342	10,591,456
40	Wharton	4,053,273,698	0.12656	5,129,823	2,714,792
41	Dallas	182,822,509,060	0.124775	228,116,786	27,367,114
42	Navarro	2,917,537,473	0.1202	3,506,880	4,769,392
43	Cisco	618,990,210	0.11357	702,987	1,518,296
44	Lone Star	142,930,000,000	0.1081	154,507,330	24,804,192
45	Houston	160,632,113,433	0.10689	171,699,666	22,337,452
46	Texarkana	5,115,728,940	0.105267	5,385,174	1,874,816
47	Northeast Texas	4,171,930,040	0.0995	4,151,070	1,398,808
48	Austin	139,307,147,930	0.0942	131,227,333	14,279,182
49	Collin	86,977,686,228	0.08196	71,286,912	9,946,544
50	Blinn	2,450,847,336	0.0584	1,431,295	7,408,544

*Indicates a Maintenance Tax District. In the case of a tax rate range in these areas the average was used.

				Sorted By:	
Order	College	Valuation	Tax Rate	FY 2015 Levy*	2013-2014 Contact Hours
1	Dallas	182,822,509,060	0.124775	228,116,786	27,367,114
2	Tarrant	133,754,637,419	0.1495	199,963,183	18,599,915
3	Houston	160,632,113,433	0.10689	171,699,666	22,337,452
4	Alamo	111,637,768,682	0.14915	166,507,732	20,138,720
5	Lone Star	142,930,000,000	0.1081	154,507,330	24,804,192
6	Austin	139,307,147,930	0.0942	131,227,333	14,279,182
7	San Jacinto	42,937,007,385	0.185602	79,691,944	12,064,848
8	Collin	86,977,686,228	0.08196	71,286,912	9,946,544
9	South Texas	30,919,771,514	0.185	57,201,577	11,350,192
10	Del Mar	21,620,447,339	0.248073	53,634,492	4,238,464
11	El Paso	38,140,477,339	0.128122	48,866,342	10,591,456
12	Laredo	11,359,617,483	0.297163	33,756,580	3,164,752
13	Odessa	14,692,815,869	0.1766	25,947,513	1,886,835
14	Midland*	20,273,138,118	0.15239	25,217,757	2,083,492
15	Lee	8,887,714,104	0.2607	23,170,271	2,709,760
16	McLennan	13,527,366,945	0.14953	20,227,472	3,647,704
17	Tyler	9,947,148,441	0.199926	19,886,936	4,951,336
18	College of the Mainland	9,587,628,660	0.205085	19,662,788	1,626,644
19	Amarillo*	11,207,890,892	0.2575	18,679,236	4,068,464
20	Brazosport	6,617,807,882	0.280878	18,587,966	1,542,944
21	Texas Southmost	11,196,866,552	0.164094	18,373,386	8,960,544
22	Alvin	7,131,404,693	0.204009	14,548,707	2,166,256
23	Grayson	7,775,186,447	0.1815	14,111,963	2,175,776
24	South Plains	4,729,377,055	0.26532	12,547,983	4,088,464
25	Victoria	6,391,705,829	0.1875	11,984,448	1,626,928
26	Central Texas	8,456,204,362	0.1366	11,551,175	5,429,674
27	Weatherford*	9,793,881,698	0.160788	11,227,706	2,276,466
28	Galveston	5,765,752,334	0.187	10,781,957	949,163
29	Panola	4,477,690,828	0.21483	9,619,423	1,253,552
30	Western Texas	3,700,014,908	0.2457	9,090,937	901,032
31	Temple*	4,216,460,980	0.256284	8,706,992	2,303,748
32	Trinity Valley*	7,990,659,554	0.1536	8,278,323	3,109,452
33	Howard	4,037,159,758	0.17662	7,130,432	1,329,560
34	Angelina	3,988,930,747	0.1719	6,856,972	2,054,459
35	Kilgore	4,071,580,141	0.154	6,270,233	2,642,042
36	Texarkana	5,115,728,940	0.105267	5,385,174	1,874,816
37	Wharton	4,053,273,698	0.12656	5,129,823	2,714,792
38	Northeast Texas	4,171,930,040	0.0995	4,151,070	1,398,808
39	North Central Texas*	3,390,000,321	0.1595	3,712,050	3,592,366
40	Navarro	2,917,537,473	0.1202	3,506,880	4,769,392
41	Paris	1,574,086,224	0.1866	2,937,245	2,553,350
42	Southwest Texas	2,130,073,482	0.13	2,769,096	1,979,024
43	Vernon	1,205,268,590	0.217669	2,623,496	1,261,984
44	Coastal Bend	1,256,194,659	0.17738	2,228,238	1,579,104
45	Frank Phillips*	678,595,280	0.24767	1,492,910	511,556
46	Hill*	1,647,552,290	0.139479	1,474,213	2,069,232
47	Blinn	2,450,847,336	0.0584	1,431,295	7,408,544
48	Cisco	618,990,210	0.11357	702,987	1,518,296
49	Clarendon*	212,974,226	0.2708	470,247	644,608
50	Ranger	109,317,710	0.247765	270,851	910,004

*Indicates a Maintenance Tax District. In the case of a tax rate range in these areas the average was used.

					Sorted By:
Order	College	Valuation	Tax Rate	FY 2015 Levy*	2013-2014 Contact Hours
1	Dallas	182,822,509,060	0.124775	228,116,786	27,367,114
2	Lone Star	142,930,000,000	0.1081	154,507,330	24,804,192
3	Houston	160,632,113,433	0.10689	171,699,666	22,337,452
4	Alamo	111,637,768,682	0.14915	166,507,732	20,138,720
5	Tarrant	133,754,637,419	0.1495	199,963,183	18,599,915
6	Austin	139,307,147,930	0.0942	131,227,333	14,279,182
7	San Jacinto	42,937,007,385	0.185602	79,691,944	12,064,848
8	South Texas	30,919,771,514	0.185	57,201,577	11,350,192
9	El Paso	38,140,477,339	0.128122	48,866,342	10,591,456
10	Collin	86,977,686,228	0.08196	71,286,912	9,946,544
11	Texas Southmost	11,196,866,552	0.164094	18,373,386	8,960,544
12	Blinn	2,450,847,336	0.0584	1,431,295	7,408,544
13	Central Texas	8,456,204,362	0.1366	11,551,175	5,429,674
14	Tyler	9,947,148,441	0.199926	19,886,936	4,951,336
15	Navarro	2,917,537,473	0.1202	3,506,880	4,769,392
16	Del Mar	21,620,447,339	0.248073	53,634,492	4,238,464
17	South Plains	4,729,377,055	0.26532	12,547,983	4,088,464
18	Amarillo*	11,207,890,892	0.2575	18,679,236	4,068,464
19	McLennan	13,527,366,945	0.14953	20,227,472	3,647,704
20	North Central Texas*	3,390,000,321	0.1595	3,712,050	3,592,366
21	Laredo	11,359,617,483	0.297163	33,756,580	3,164,752
22	Trinity Valley*	7,990,659,554	0.1536	8,278,323	3,109,452
23	Wharton	4,053,273,698	0.12656	5,129,823	2,714,792
24	Lee	8,887,714,104	0.2607	23,170,271	2,709,760
25	Kilgore	4,071,580,141	0.154	6,270,233	2,642,042
26	Paris	1,574,086,224	0.1866	2,937,245	2,553,350
27	Temple*	4,216,460,980	0.256284	8,706,992	2,303,748
28	Weatherford*	9,793,881,698	0.160788	11,227,706	2,276,466
29	Grayson	7,775,186,447	0.1815	14,111,963	2,175,776
30	Alvin	7,131,404,693	0.204009	14,548,707	2,166,256
31	Midland*	20,273,138,118	0.15239	25,217,757	2,083,492
32	Hill*	1,647,552,290	0.139479	1,474,213	2,069,232
33	Angelina	3,988,930,747	0.1719	6,856,972	2,054,459
34	Southwest Texas	2,130,073,482	0.13	2,769,096	1,979,024
35	Odessa	14,692,815,869	0.1766	25,947,513	1,886,835
36	Texarkana	5,115,728,940	0.105267	5,385,174	1,874,816
37	Victoria	6,391,705,829	0.1875	11,984,448	1,626,928
38	College of the Mainland	9,587,628,660	0.205085	19,662,788	1,626,644
39	Coastal Bend	1,256,194,659	0.17738	2,228,238	1,579,104
40	Brazosport	6,617,807,882	0.280878	18,587,966	1,542,944
41	Cisco	618,990,210	0.11357	702,987	1,518,296
42	Northeast Texas	4,171,930,040	0.0995	4,151,070	1,398,808
43	Howard	4,037,159,758	0.17662	7,130,432	1,329,560
44	Vernon	1,205,268,590	0.217669	2,623,496	1,261,984
45	Panola	4,477,690,828	0.21483	9,619,423	1,253,552
46	Galveston	5,765,752,334	0.187	10,781,957	949,163
47	Ranger	109,317,710	0.247765	270,851	910,004
48	Western Texas	3,700,014,908	0.2457	9,090,937	901,032
49	Clarendon*	212,974,226	0.2708	470,247	644,608
50	Frank Phillips*	678,595,280	0.24767	1,492,910	511,556

*Indicates a Maintenance Tax District. In the case of a tax rate range in these areas the average was used.

						Sorted By:
Order	College	Valuation	Tax Rate	FY 2015 Levy*	2013-2014 Contact Hours	Taxes Levied Per Contact Hour (Levy/Contact hour)
1	Odessa	14,692,815,869	0.1766	25,947,513	1,886,835	13.75
2	Del Mar	21,620,447,339	0.248073	53,634,492	4,238,464	12.65
3	Midland*	20,273,138,118	0.15239	25,217,757	2,083,492	12.10
4	College of the Mainland	9,587,628,660	0.205085	19,662,788	1,626,644	12.09
5	Brazosport	6,617,807,882	0.280878	18,587,966	1,542,944	12.05
6	Galveston	5,765,752,334	0.187	10,781,957	949,163	11.36
7	Tarrant	133,754,637,419	0.1495	199,963,183	18,599,915	10.75
8	Laredo	11,359,617,483	0.297163	33,756,580	3,164,752	10.67
9	Western Texas	3,700,014,908	0.2457	9,090,937	901,032	10.09
10	Austin	139,307,147,930	0.0942	131,227,333	14,279,182	9.19
11	Lee	8,887,714,104	0.2607	23,170,271	2,709,760	8.55
12	Dallas	182,822,509,060	0.124775	228,116,786	27,367,114	8.34
13	Alamo	111,637,768,682	0.14915	166,507,732	20,138,720	8.27
14	Houston	160,632,113,433	0.10689	171,699,666	22,337,452	7.69
15	Panola	4,477,690,828	0.21483	9,619,423	1,253,552	7.67
16	Victoria	6,391,705,829	0.1875	11,984,448	1,626,928	7.37
17	Collin	86,977,686,228	0.08196	71,286,912	9,946,544	7.17
18	Alvin	7,131,404,693	0.204009	14,548,707	2,166,256	6.72
19	San Jacinto	42,937,007,385	0.185602	79,691,944	12,064,848	6.61
20	Grayson	7,775,186,447	0.1815	14,111,963	2,175,776	6.49
21	Lone Star	142,930,000,000	0.1081	154,507,330	24,804,192	6.23
22	McLennan	13,527,366,945	0.14953	20,227,472	3,647,704	5.55
23	Howard	4,037,159,758	0.17662	7,130,432	1,329,560	5.36
24	South Texas	30,919,771,514	0.185	57,201,577	11,350,192	5.04
25	Weatherford*	9,793,881,698	0.160788	11,227,706	2,276,466	4.93
26	El Paso	38,140,477,339	0.128122	48,866,342	10,591,456	4.61
27	Amarillo*	11,207,890,892	0.2575	18,679,236	4,068,464	4.59
28	Tyler	9,947,148,441	0.199926	19,886,936	4,951,336	4.02
29	Temple*	4,216,460,980	0.256284	8,706,992	2,303,748	3.78
30	Angelina	3,988,930,747	0.1719	6,856,972	2,054,459	3.34
31	South Plains	4,729,377,055	0.26532	12,547,983	4,088,464	3.07
32	Northeast Texas	4,171,930,040	0.0995	4,151,070	1,398,808	2.97
33	Frank Phillips*	678,595,280	0.24767	1,492,910	511,556	2.92
34	Texarkana	5,115,728,940	0.105267	5,385,174	1,874,816	2.87
35	Trinity Valley*	7,990,659,554	0.1536	8,278,323	3,109,452	2.66
36	Kilgore	4,071,580,141	0.154	6,270,233	2,642,042	2.37
37	Central Texas	8,456,204,362	0.1366	11,551,175	5,429,674	2.13
38	Vernon	1,205,268,590	0.217669	2,623,496	1,261,984	2.08
39	Texas Southmost	11,196,866,552	0.164094	18,373,386	8,960,544	2.05
40	Wharton	4,053,273,698	0.12656	5,129,823	2,714,792	1.89
41	Coastal Bend	1,256,194,659	0.17738	2,228,238	1,579,104	1.41
42	Southwest Texas	2,130,073,482	0.13	2,769,096	1,979,024	1.40
43	Paris	1,574,086,224	0.1866	2,937,245	2,553,350	1.15
44	North Central Texas*	3,390,000,321	0.1595	3,712,050	3,592,366	1.03
45	Navarro	2,917,537,473	0.1202	3,506,880	4,769,392	0.74
46	Clarendon*	212,974,226	0.2708	470,247	644,608	0.73
47	Hill*	1,647,552,290	0.139479	1,474,213	2,069,232	0.71
48	Cisco	618,990,210	0.11357	702,987	1,518,296	0.46
49	Ranger	109,317,710	0.247765	270,851	910,004	0.30
50	Blinn	2,450,847,336	0.0584	1,431,295	7,408,544	0.19

*Indicates a Maintenance Tax District. In the case of a tax rate range in these areas the average was used.